

Product datasheet

Anti-Glycophorin C antibody [EPR4115] ab108619

重组 RabMAb

1 References 1 图像

概述

产品名称	Anti-Glycophorin C抗体[EPR4115]
描述	兔单克隆抗体[EPR4115] to Glycophorin C
宿主	Rabbit
经测试应用	适用于: WB, IP, ICC, Flow Cyt 不适用于: IHC-P
种属反应性	与反应: Human
免疫原	Synthetic peptide corresponding to residues on the N-terminal extracellular domain of Human Glycophorin C.
阳性对照	TF1 and K562 cell lysates.
常规说明	Mouse, Rat: We have preliminary internal testing data to indicate this antibody may not react with these species. Please contact us for more information.
	Our RabMAb [®] technology is a patented hybridoma-based technology for making rabbit monoclonal antibodies. For details on our patents, please refer to RabMAb[®] patents
	This product is a recombinant rabbit monoclonal antibody.

性能

形式	Liquid
存放说明	Shipped at 4°C. Store at -20°C. Stable for 12 months at -20°C.
存储溶液	PBS 49%,Sodium azide 0.01%,Glycerol 50%,BSA 0.05%
纯度	Tissue culture supernatant
克隆	单克隆
克隆编号	EPR4115
同种型	IgG

应用

Our [Abpromise guarantee](#) covers the use of **ab108619** in the following tested applications.

The application notes include recommended starting dilutions; optimal dilutions/concentrations should be determined by the end user.

应用	Ab评论	说明
WB		1/1000 - 1/10000. Predicted molecular weight: 14 kDa.
IP		1/10 - 1/100.
ICC		1/250 - 1/500.
Flow Cyt		1/10 - 1/100. ab172730 - Rabbit monoclonal IgG, is suitable for use as an isotype control with this antibody.

应用说明 Is unsuitable for IHC-P.

靶标

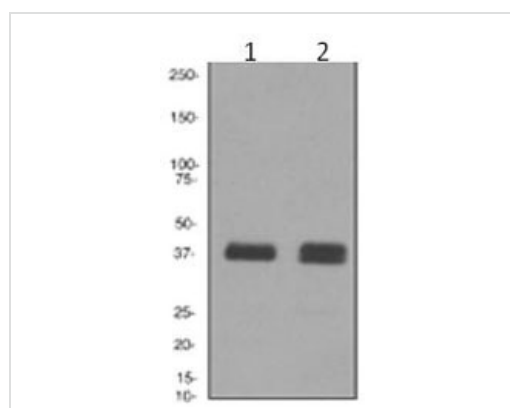
功能 This protein is a minor sialoglycoprotein in human erythrocyte membranes. The blood group Gerbich antigens and receptors for Plasmodium falciparum merozoites are most likely located within the extracellular domain. Glycophorin-C plays an important role in regulating the stability of red cells.

组织特异性 Glycophorin-C is expressed in erythrocytes. Glycophorin-D is ubiquitous.

序列相似性 Belongs to the glycophorin-C family.

细胞定位 Cell membrane. Linked to the membrane via band 4.1.

图片



All lanes : Anti-Glycophorin C antibody [EPR4115] (ab108619) at 1/1000 dilution

Lane 1 : TF1 cell lysates

Lane 2 : K562 cell lysates

Lysates/proteins at 10 µg per lane.

Predicted band size: 14 kDa

Western blot - Glycophorin C antibody [EPR4115] (ab108619)

Please note: All products are "FOR RESEARCH USE ONLY AND ARE NOT INTENDED FOR DIAGNOSTIC OR THERAPEUTIC USE"

Our Abpromise to you: Quality guaranteed and expert technical support

- Replacement or refund for products not performing as stated on the datasheet
- Valid for 12 months from date of delivery
- Response to your inquiry within 24 hours

- We provide support in Chinese, English, French, German, Japanese and Spanish
- Extensive multi-media technical resources to help you
- We investigate all quality concerns to ensure our products perform to the highest standards

If the product does not perform as described on this datasheet, we will offer a refund or replacement. For full details of the Abpromise, please visit <http://www.abcam.cn/abpromise> or contact our technical team.

Terms and conditions

- Guarantee only valid for products bought direct from Abcam or one of our authorized distributors