


Product datasheet

Anti-Glucosidase 2 subunit beta antibody ab125869

★★★★★ 1 Abreviews 2 图像

概述

产品名称	Anti-Glucosidase 2 subunit beta抗体
描述	兔多克隆抗体to Glucosidase 2 subunit beta
宿主	Rabbit
经测试应用	适用于: WB, ICC/IF
种属反应性	与反应: Human 预测可用于: Mouse 
免疫原	Recombinant fragment, corresponding to a region within amino acids 237-460 of Human Glucosidase 2 subunit beta (P14314).
阳性对照	A549, HeLa, HepG2 and HCT116 whole cell lysates; HeLa cells.

性能

形式	Liquid
存放说明	Shipped at 4°C. Upon delivery aliquot and store at -20°C or -80°C. Avoid repeated freeze / thaw cycles.
存储溶液	pH: 7.00 Preservative: 0.01% Thimerosal (merthiolate) Constituents: 78% PBS, 20% Glycerol, 1% BSA
纯度	Immunogen affinity purified
纯化说明	ab125869 is purified by antigen-affinity chromatography.
克隆	多克隆
同种型	IgG

应用

Our [Abpromise guarantee](#) covers the use of **ab125869** in the following tested applications.

The application notes include recommended starting dilutions; optimal dilutions/concentrations should be determined by the end user.

应用	Ab评论	说明
WB		1/5000 - 1/20000. Predicted molecular weight: 59 kDa.
ICC/IF	★★★★★	Use at an assay dependent concentration.

## 靶标

### 功能

Regulatory subunit of glucosidase II.

### 通路

Glycan metabolism; N-glycan metabolism.

### 疾病相关

Defects in PRKCSH are a cause of polycystic liver disease (PCLD) [MIM:174050]. PCLD is an autosomal dominant disorder and is characterized by the presence of multiple liver cysts of biliary epithelial origin. PCLD is a distinct clinical and genetic entity that can occur independently from autosomal dominant polycystic kidney disease (ADPKD) [MIM:173900], which in a considerable but uncertain proportion of cases is associated with hepatic cysts.

### 序列相似性

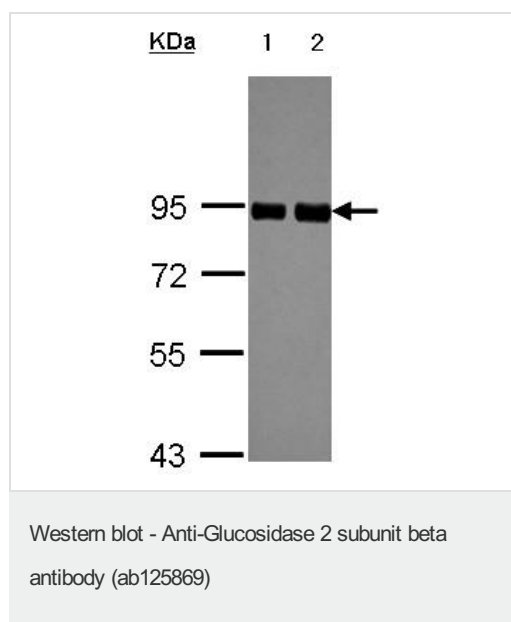
Contains 2 EF-hand domains.

Contains 1 PRKCSH domain.

### 细胞定位

Endoplasmic reticulum.

## 图片



**All lanes** : Anti-Glucosidase 2 subunit beta antibody (ab125869) at 1/10000 dilution

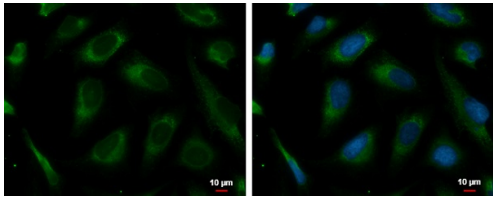
**Lane 1** : A549 whole cell lysate

**Lane 2** : HeLa whole cell lysate

Lysates/proteins at 30 µg per lane.

**Predicted band size:** 59 kDa

7.5% SDS PAGE



Immunocytochemistry/ Immunofluorescence - Anti-Glucosidase 2 subunit beta antibody (ab125869)

4% paraformaldehyde-fixed HeLa (human epithelial cell line from cervix adenocarcinoma) cells stained for Glucosidase 2 subunit beta (green) using ab125869 at 1/500 dilution in ICC/IF.

Blue: Hoechst 33342 staining.

**Please note:** All products are "FOR RESEARCH USE ONLY AND ARE NOT INTENDED FOR DIAGNOSTIC OR THERAPEUTIC USE"

### Our Abpromise to you: Quality guaranteed and expert technical support

- Replacement or refund for products not performing as stated on the datasheet
- Valid for 12 months from date of delivery
- Response to your inquiry within 24 hours
- We provide support in Chinese, English, French, German, Japanese and Spanish
- Extensive multi-media technical resources to help you
- We investigate all quality concerns to ensure our products perform to the highest standards

If the product does not perform as described on this datasheet, we will offer a refund or replacement. For full details of the Abpromise, please visit <http://www.abcam.cn/abpromise> or contact our technical team.

### Terms and conditions

- Guarantee only valid for products bought direct from Abcam or one of our authorized distributors