


Product datasheet

Anti-GSK3 alpha (phospho S21) antibody ab28808

4 References 3 图像

概述

产品名称	Anti-GSK3 alpha (phospho S21)抗体
描述	兔多克隆抗体to GSK3 alpha (phospho S21)
宿主	Rabbit
经测试应用	适用于: ICC/IF, ELISA, WB, IHC-P, IP
种属反应性	与反应: Mouse, Human 预测可用于: Rat 
免疫原	The antiserum was produced against synthesized phosphopeptide derived from human GSK3a around the phosphorylation site of Serine 21.

性能

形式	Liquid
存放说明	Shipped at 4°C. Upon delivery aliquot and store at -20°C. Avoid freeze / thaw cycles.
存储溶液	Preservative: 0.02% Sodium Azide Constituents: 50% Glycerol, PBS, 150mM Sodium chloride, pH 7.4
纯度	Immunogen affinity purified
克隆	多克隆
同种型	IgG

应用

Our [Abpromise guarantee](#) covers the use of **ab28808** in the following tested applications.

The application notes include recommended starting dilutions; optimal dilutions/concentrations should be determined by the end user.

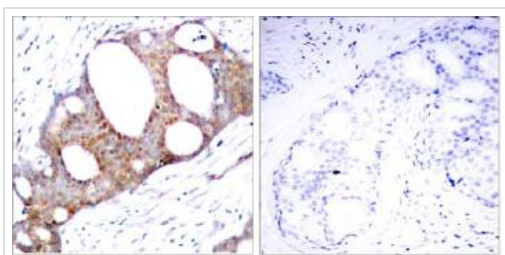
应用	Ab评论	说明
ICC/IF		Use a concentration of 1 - 5 µg/ml.
ELISA		Use at an assay dependent concentration.
WB		1/500 - 1/1000. Predicted molecular weight: 50 kDa.

应用	Ab评论	说明
IHC-P		Use at an assay dependent concentration.
IP		Use at an assay dependent concentration.

## 靶标

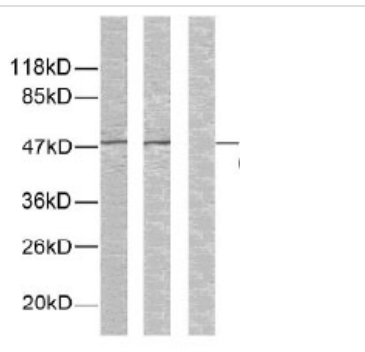
功能	Implicated in the hormonal control of several regulatory proteins including glycogen synthase, MYB and the transcription factor JUN.
序列相似性	Belongs to the protein kinase superfamily, CMGC Ser/Thr protein kinase family, GSK-3 subfamily. Contains 1 protein kinase domain.

## 图片



Immunohistochemistry (Paraffin-embedded sections)  
- GSK3 alpha (phospho S21) antibody (ab28808)

Immunohistochemical analysis of paraffin embedded breast carcinoma, using primary CDK2 (Phospho-Thr160) ab28808 at 1:100 dilution and Alkaline Phosphatase AffiniPure Goat Anti-Rabbit IgG (H+L) secondary antibody. Left: Untreated; Right: Treated with synthesized phosphopeptide.



Western blot - GSK3 alpha (phospho S21) antibody (ab28808)

**All lanes :** Anti-GSK3 alpha (phospho S21) antibody (ab28808) at 1/1000 dilution

**Lane 1 :** Extracts from ovary cancer cells.

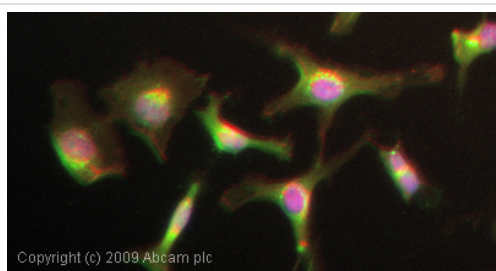
**Lane 2 :** Extracts from ovary cancer cells. with synthesised non phosphopeptide at 1 µg/ml

**Lane 3 :** Extracts from ovary cancer cells. with synthesised phosphopeptide at 1 µg/ml

Lysates/proteins at 30 µg per lane.

**Predicted band size:** 50 kDa

**Observed band size:** 50 kDa



Immunocytochemistry/ Immunofluorescence-GSK3 alpha (phospho S21) antibody(ab28808)

ICC/IF image of ab28808 stained HeLa cells. The cells were 4% PFA fixed (10 min) and then incubated in 1%BSA / 10% normal goat serum / 0.3M glycine in 0.1% PBS-Tween for 1h to permeabilise the cells and block non-specific protein-protein interactions. The cells were then incubated with the antibody (ab28808, 1µg/ml) overnight at +4°C. The secondary antibody (green) was Alexa Fluor® 488 goat anti-rabbit IgG (H+L) used at a 1/1000 dilution for 1h. Alexa Fluor® 594 WGA was used to label plasma membranes (red) at a 1/200 dilution for 1h. DAPI was used to stain the cell nuclei (blue) at a concentration of 1.43µM.

**Please note:** All products are "FOR RESEARCH USE ONLY AND ARE NOT INTENDED FOR DIAGNOSTIC OR THERAPEUTIC USE"

### Our Abpromise to you: Quality guaranteed and expert technical support

- Replacement or refund for products not performing as stated on the datasheet
- Valid for 12 months from date of delivery
- Response to your inquiry within 24 hours
- We provide support in Chinese, English, French, German, Japanese and Spanish

- Extensive multi-media technical resources to help you
- We investigate all quality concerns to ensure our products perform to the highest standards

If the product does not perform as described on this datasheet, we will offer a refund or replacement. For full details of the Abpromise, please visit <http://www.abcam.cn/abpromise> or contact our technical team.

### **Terms and conditions**

---

- Guarantee only valid for products bought direct from Abcam or one of our authorized distributors