

Product datasheet

Anti-GSC2 antibody ab65032

★★★★☆ 2 Abreviews 2 图像

概述

产品名称	Anti-GSC2抗体
描述	兔多克隆抗体to GSC2
宿主	Rabbit
特异性	ab65032 detects endogenous levels of total GSC2 protein.
经测试应用	适用于: ELISA, WB, IHC-P
种属反应性	与反应: Mouse, Human
免疫原	Synthetic peptide derived from an internal sequence of human GSC2.
阳性对照	293, HepG2 and COLO205 cell extracts.

性能

形式	Liquid
存放说明	Shipped at 4°C. Store at -20°C. Stable for 12 months at -20°C.
存储溶液	Preservative: 0.02% Sodium Azide Constituents: 50% Glycerol, PBS (without Mg ²⁺ and Ca ²⁺), 150mM Sodium chloride, pH 7.4
纯度	Immunogen affinity purified
纯化说明	ab65032 was affinity purified from rabbit antiserum by affinity chromatography using epitope specific immunogen.
克隆	多克隆
同种型	IgG

应用

Our [Abpromise guarantee](#) covers the use of **ab65032** in the following tested applications.

The application notes include recommended starting dilutions; optimal dilutions/concentrations should be determined by the end user.

应用	Ab评论	说明
ELISA		1/20000.

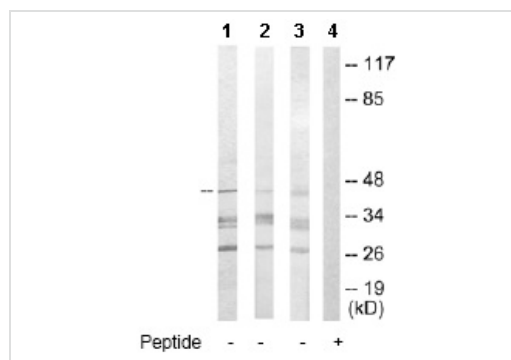
应用	Ab评论	说明
WB	★☆☆☆☆	1/500 - 1/1000. Detects a band of approximately 45 kDa (predicted molecular weight: 22 kDa).
IHC-P	★★★★★	1/1000. Perform heat mediated antigen retrieval before commencing with IHC staining protocol.

靶标

相关性 GSC2, also known as Goosecoidlike or GSCL, is a homeodomain-containing gene that resides in the critical region for VCFS/DGS on 22q11. Velocardiofacial syndrome (VCFS) is a developmental disorder characterized by conotruncal heart defects, craniofacial anomalies, and learning disabilities and is phenotypically related to DiGeorge syndrome (DGS), both of which are associated with hemizygous 22q11 deletions.

细胞定位 Nuclear

图片



Western blot - GSC2 antibody (ab65032)

All lanes : Anti-GSC2 antibody (ab65032) at 1/500 dilution

Lane 1 : 293 cell extract

Lane 2 : HepG2 cell extract

Lane 3 : COLO205 cell extract

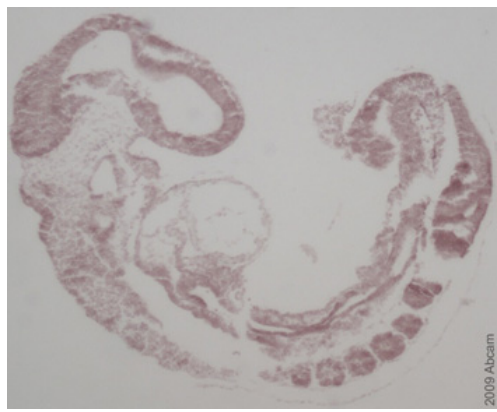
Lane 4 : COLO205 cell extract with immunising peptide at 10 µg

Lysates/proteins at 30 µg per lane.

Predicted band size: 22 kDa

Observed band size: 45 kDa

Additional bands at: 28 kDa, 34 kDa. We are unsure as to the identity of these extra bands.



Immunostaining of mouse E9.5 embryo tissue sections. After using a biotinylated secondary, ABC and then DAB was used for color development. Please see abreview for protocol details.

Immunohistochemistry (Formalin/PFA-fixed paraffin-embedded sections) - GSC2 antibody (ab65032)

This image is courtesy of an Abreview submitted by Dr Jesse Mager

Please note: All products are "FOR RESEARCH USE ONLY AND ARE NOT INTENDED FOR DIAGNOSTIC OR THERAPEUTIC USE"

Our Abpromise to you: Quality guaranteed and expert technical support

- Replacement or refund for products not performing as stated on the datasheet
- Valid for 12 months from date of delivery
- Response to your inquiry within 24 hours
- We provide support in Chinese, English, French, German, Japanese and Spanish
- Extensive multi-media technical resources to help you
- We investigate all quality concerns to ensure our products perform to the highest standards

If the product does not perform as described on this datasheet, we will offer a refund or replacement. For full details of the Abpromise, please visit <http://www.abcam.cn/abpromise> or contact our technical team.

Terms and conditions

- Guarantee only valid for products bought direct from Abcam or one of our authorized distributors