


Product datasheet

Anti-GRP78 BiP antibody ab32618

29 References 4 图像

概述

产品名称	Anti-GRP78 BiP抗体
描述	兔多克隆抗体to GRP78 BiP
宿主	Rabbit
经测试应用	适用于: WB, IHC-P, ICC/IF
种属反应性	与反应: Mouse, Chicken, Human 预测可用于: Rat, Hamster, Xenopus laevis 
免疫原	Synthetic peptide corresponding to GRP78 BiP.
阳性对照	HeLa cells, breast carcinoma.

性能

形式	Liquid
存放说明	Shipped at 4°C. Upon delivery aliquot and store at -20°C. Avoid freeze / thaw cycles.
存储溶液	Preservative: 0.1% Sodium Azide Constituents: 1% BSA, 10mM PBS, pH 7.4
纯度	Protein A purified
克隆	多克隆
同种型	IgG

应用

Our [Abpromise guarantee](#) covers the use of **ab32618** in the following tested applications.

The application notes include recommended starting dilutions; optimal dilutions/concentrations should be determined by the end user.

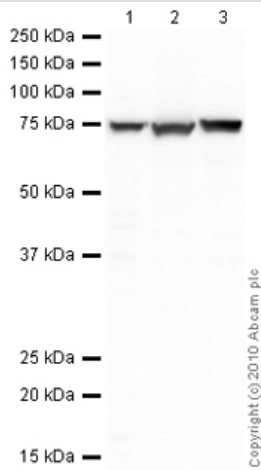
应用	Ab评论	说明
WB		Use at an assay dependent concentration. Detects a band of approximately 75 kDa (predicted molecular weight: 78 kDa).
IHC-P		1/100. Perform heat mediated antigen retrieval before commencing with IHC staining protocol.

应用	Ab评论	说明
ICC/IF		1/100.

## 靶标

<b>功能</b>	Probably plays a role in facilitating the assembly of multimeric protein complexes inside the endoplasmic reticulum. Involved in the correct folding of proteins and degradation of misfolded proteins via its interaction with DNAJC10, probably to facilitate the release of DNAJC10 from its substrate.
<b>疾病相关</b>	Autoantigen in rheumatoid arthritis.
<b>序列相似性</b>	Belongs to the heat shock protein 70 family.
<b>细胞定位</b>	Endoplasmic reticulum lumen. Melanosome. Cytoplasm. Identified by mass spectrometry in melanosome fractions from stage I to stage IV.

## 图片



Western blot - Anti-GRP78 BiP antibody (ab32618)

**All lanes :** Anti-GRP78 BiP antibody (ab32618) at 1 µg/ml

**Lane 1 :** Liver (Mouse) Tissue Lysate

**Lane 2 :** CHO-K1 cell lysate Whole Cell Lysate

**Lane 3 :** HeLa (Human epithelial carcinoma cell line) Whole Cell Lysate

Lysates/proteins at 10 µg per lane.

### Secondary

**All lanes :** Goat Anti-Rabbit IgG H&L (HRP) preadsorbed (ab97080) at 1/5000 dilution

Developed using the ECL technique.

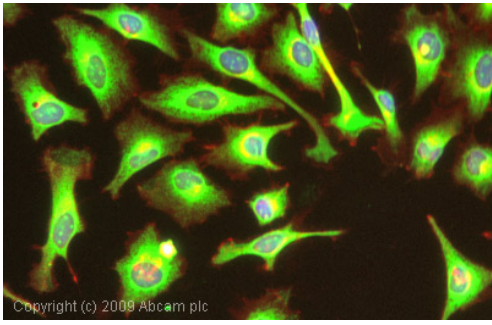
Performed under reducing conditions.

**Predicted band size:** 78 kDa

**Observed band size:** 75 kDa

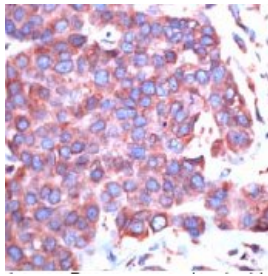
**Exposure time:** 30 seconds

The band observed at 75 kDa could potentially be a cleaved form of GRP78 BiP due to the presence of a 18 amino acid signal peptide.



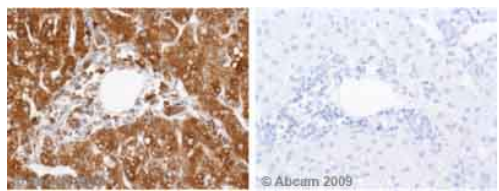
Immunocytochemistry/ Immunofluorescence - Anti-GRP78 BiP antibody (ab32618)

ICC/IF image of ab32618 stained HeLa cells. The cells were 100% methanol fixed (5 min) and then incubated in 1%BSA / 10% normal goat serum / 0.3M glycine in 0.1% PBS-Tween for 1h to permeabilise the cells and block non-specific protein-protein interactions. The cells were then incubated with the antibody (ab32618, 1µg/ml) overnight at +4°C. The secondary antibody (green) was Alexa Fluor® 488 goat anti-rabbit IgG (H+L) used at a 1/1000 dilution for 1h. Alexa Fluor® 594 WGA was used to label plasma membranes (red) at a 1/200 dilution for 1h. DAPI was used to stain the cell nuclei (blue) at a concentration of 1.43µM.



Microtomy (Formalin-fixed paraffin-embedded sections) - Anti-GRP78 BiP antibody (ab32618)

This image shows human breast carcinoma stained with ab32618 diluted 1/100.



Immunohistochemistry (Formalin/PFA-fixed paraffin-embedded sections) - Anti-GRP78 BiP antibody (ab32618)

Ab32618 staining Human normal liver parenchyma. Staining is localised to endoplasmic reticulum compartment.

Left panel: with primary antibody at 2 ug/ml.

Right panel: isotype control.

Sections were stained using an automated system DAKO Autostainer Plus , at room temperature: sections were rehydrated and antigen retrieved with the Dako 3 in 1 AR buffers citrate pH6.0 in a DAKO PT Link. Slides were peroxidase blocked in 3% H<sub>2</sub>O<sub>2</sub> in methanol for 10 mins. They were then blocked with Dako Protein block for 10 minutes (containing casein 0.25% in PBS) then incubated with primary antibody for 20 min and detected with Dako envision flex amplification kit for 30 minutes. Colorimetric detection was completed with Diaminobenzidine for 5 minutes. Slides were counterstained with Haematoxylin and coverslipped under DePeX. Please note that for manual staining we recommend to optimize the primary antibody concentration and incubation time (overnight incubation), and amplification may be requi

**Please note:** All products are "FOR RESEARCH USE ONLY AND ARE NOT INTENDED FOR DIAGNOSTIC OR THERAPEUTIC USE"

### Our Abpromise to you: Quality guaranteed and expert technical support

- Replacement or refund for products not performing as stated on the datasheet
- Valid for 12 months from date of delivery
- Response to your inquiry within 24 hours
- We provide support in Chinese, English, French, German, Japanese and Spanish
- Extensive multi-media technical resources to help you
- We investigate all quality concerns to ensure our products perform to the highest standards

If the product does not perform as described on this datasheet, we will offer a refund or replacement. For full details of the Abpromise, please visit <http://www.abcam.cn/abpromise> or contact our technical team.

### Terms and conditions

- Guarantee only valid for products bought direct from Abcam or one of our authorized distributors