

Product datasheet

Anti-GPSM2 antibody ab84571

★★★★☆ 2 Abreviews 5 图像

概述

产品名称	Anti-GPSM2抗体
描述	兔多克隆抗体to GPSM2
宿主	Rabbit
经测试应用	适用于: ICC/IF, IHC-Fr, WB, IHC-P
种属反应性	与反应: Mouse, Dog, Human 预测可用于: Rat, Rabbit, Horse, Chicken, Guinea pig, Cow, Cat, Pig, Zebrafish
免疫原	Synthetic peptide corresponding to a region within N terminal amino acids 72-121 (YFYLHDYAKA LEYHHHDLTL ARTIGDQLGE AKASGNLGNT LKVLGNFDEA) of Human GPSM2 (NP_037428). Run BLAST with ExPASy Run BLAST with NCBI
阳性对照	Human fetal liver lysate.

性能

形式	Liquid
存放说明	Shipped at 4°C. Upon delivery aliquot and store at -20°C. Avoid repeated freeze / thaw cycles.
存储溶液	Preservative: None Constituents: 2% Sucrose, PBS
纯度	Immunogen affinity purified
克隆	多克隆
同种型	IgG

应用

Our [Abpromise guarantee](#) covers the use of **ab84571** in the following tested applications.

The application notes include recommended starting dilutions; optimal dilutions/concentrations should be determined by the end user.

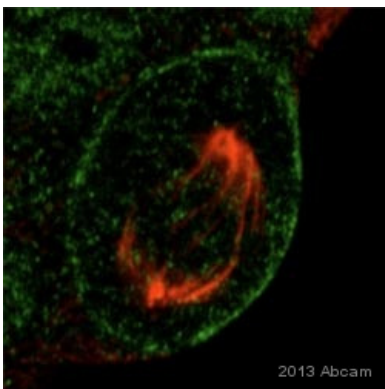
应用	Ab评论	说明
ICC/IF	★★★★☆	Use a concentration of 5 µg/ml.

应用	Ab评论	说明
IHC-Fr	★★★★☆	Use at an assay dependent concentration.
WB		Use a concentration of 1 µg/ml. Predicted molecular weight: 76 kDa. Good results were obtained when blocked with 5% non-fat dry milk in 0.05% PBS-T.
IHC-P		Use a concentration of 5 µg/ml.

靶标

功能	Plays an important role in spindle pole orientation. Interacts and contributes to the functional activity of G(i) alpha proteins. Acts to stabilize the apical complex during neuroblast divisions.
组织特异性	Ubiquitously expressed.
疾病相关	Defects in GPSM2 are the cause of deafness autosomal recessive type 82 (DFNB82) [MIM:613557]. DFNB82 is a form of non-syndromic deafness characterized by prelingual, bilateral, severe, sensorineural hearing loss. There are no symptoms of vestibular dysfunction.
序列相似性	Belongs to the GPSM family. Contains 4 GoLoco domains. Contains 8 TPR repeats.
细胞定位	Cytoplasm. Cytoplasm > cell cortex. Localizes in the cytoplasm in the interphase and at cell periphery in the metaphase.

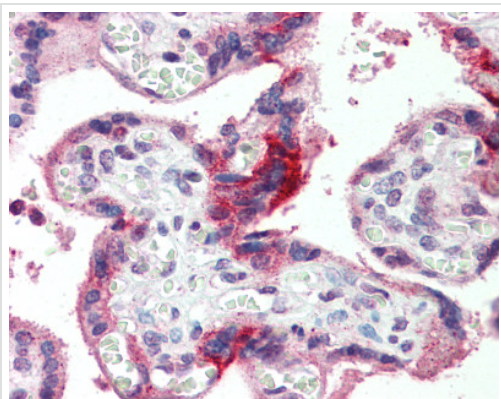
图片



ab84571 staining GPSM2 in Dog kidney cell by ICC/IF (Immunocytochemistry/immunofluorescence). Cells were fixed with paraformaldehyde, permeabilized with 0.5% Triton X-100 in PBS and blocked with 3% BSA for 30 minutes. Samples were incubated with primary antibody (1/500) for 12 hours at 4°C.

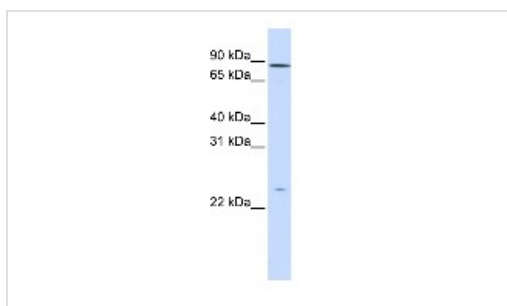
Immunocytochemistry/ Immunofluorescence - Anti-GPSM2 antibody (ab84571)

This image is courtesy of an Abreview submitted by Inma Banon



Immunohistochemistry (Formalin/PFA-fixed paraffin-embedded sections) - Anti-GPSM2 antibody (ab84571)

ab84571 at 5 µg/ml staining GPSM2 in Human placenta tissue by Immunohistochemistry (Formalin/PFA-fixed paraffin-embedded sections).



Western blot - Anti-GPSM2 antibody (ab84571)

Anti-GPSM2 antibody (ab84571) at 1 µg/ml (in 5% skim milk / PBS buffer) + human fetal liver lysate at 10 µg

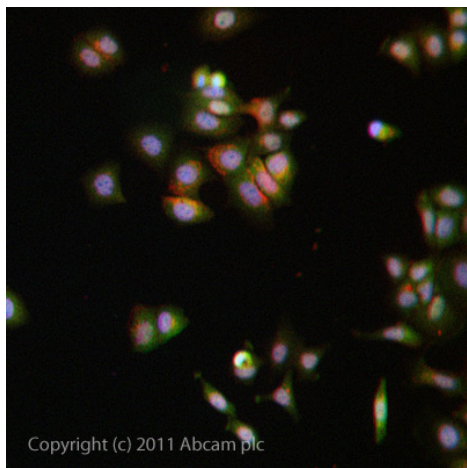
Secondary

HRP conjugated anti-Rabbit IgG at 1/50000 dilution

Predicted band size: 76 kDa

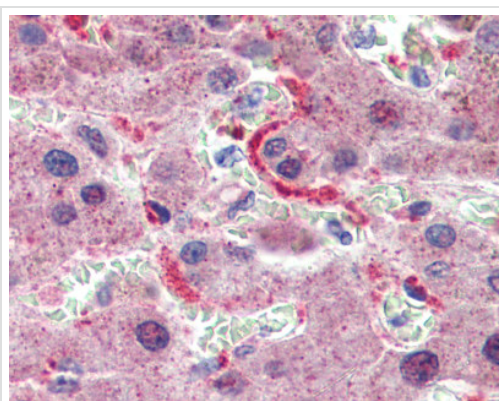
Observed band size: 85 kDa

Gel concentration: 12%



Immunocytochemistry/ Immunofluorescence - Anti-GPSM2 antibody (ab84571)

ICC/IF image of ab84571 stained MCF7 cells. The cells were 4% formaldehyde fixed (10 min) and then incubated in 1%BSA / 10% normal goat serum / 0.3M glycine in 0.1% PBS-Tween for 1h to permeabilise the cells and block non-specific protein-protein interactions. The cells were then incubated with the antibody (ab84571, 5µg/ml) overnight at +4°C. The secondary antibody (green) was [ab96899](#), DyLight® 488 goat anti-rabbit IgG (H+L) used at a 1/250 dilution for 1h. Alexa Fluor® 594 WGA was used to label plasma membranes (red) at a 1/200 dilution for 1h. DAPI was used to stain the cell nuclei (blue) at a concentration of 1.43µM.



Immunohistochemistry (Formalin/PFA-fixed paraffin-embedded sections) - Anti-GPSM2 antibody (ab84571)

ab84571 at 5 µg/ml staining GPSM2 in Human liver tissue by Immunohistochemistry (Formalin/PFA-fixed paraffin-embedded sections).

Please note: All products are "FOR RESEARCH USE ONLY AND ARE NOT INTENDED FOR DIAGNOSTIC OR THERAPEUTIC USE"

Our Abpromise to you: Quality guaranteed and expert technical support

- Replacement or refund for products not performing as stated on the datasheet
- Valid for 12 months from date of delivery
- Response to your inquiry within 24 hours
- We provide support in Chinese, English, French, German, Japanese and Spanish
- Extensive multi-media technical resources to help you
- We investigate all quality concerns to ensure our products perform to the highest standards

If the product does not perform as described on this datasheet, we will offer a refund or replacement. For full details of the Abpromise,

please visit <http://www.abcam.cn/abpromise> or contact our technical team.

Terms and conditions

- Guarantee only valid for products bought direct from Abcam or one of our authorized distributors