

Product datasheet

Anti-GLIPR1 antibody ab118382

3 图像

概述

产品名称	Anti-GLIPR1抗体
描述	小鼠单克隆抗体to GLIPR1
宿主	Mouse
经测试应用	适用于: WB, ELISA, Flow Cyt
种属反应性	与反应: Human
免疫原	Recombinant fragment, corresponding to amino acids 23-100 of Human GLIPR1 with proprietary tag (NP_006842).
阳性对照	HeLa whole cell lysate.
常规说明	Abcam is committed to meeting high standards of ethical manufacturing and as such, we will be discontinuing this product, which has been generated by the ascites method, within the next year. We are sorry for any inconvenience this may cause. If you would like help finding an alternative product, please do not hesitate to contact our scientific support team.

性能

形式	Liquid
存放说明	Shipped at 4°C. Upon delivery aliquot and store at -20°C or -80°C. Avoid repeated freeze / thaw cycles.
存储溶液	pH: 7.20 Constituent: 99% PBS
纯度	Protein A purified
克隆	单克隆
同种型	IgG2a
轻链类型	kappa

应用

Our [Abpromise guarantee](#) covers the use of **ab118382** in the following tested applications.

The application notes include recommended starting dilutions; optimal dilutions/concentrations should be determined by the end user.

应用	Ab评论	说明
WB		Use a concentration of 1 - 5 µg/ml. Predicted molecular weight: 30 kDa.
ELISA		Use at an assay dependent concentration.
Flow Cyt		Use 0.1µg for 10 ⁶ cells. ab170191 - Mouse monoclonal IgG2a, is suitable for use as an isotype control with this antibody.

靶标

组织特异性

According to PubMed:8973356, it is ubiquitously expressed with high levels in lung and kidney and low levels in heart and liver. Highly expressed in cell lines derived from nervous system tumors arising from glia, low or absent in non-glia-derived nervous system tumor cell lines. Also found in fetal kidney. According to PubMed:7607567 it is expressed only in brain tumor glioblastoma multiforme/astrocytoma and not in other nervous system tumors or normal fetal or adult tissues.

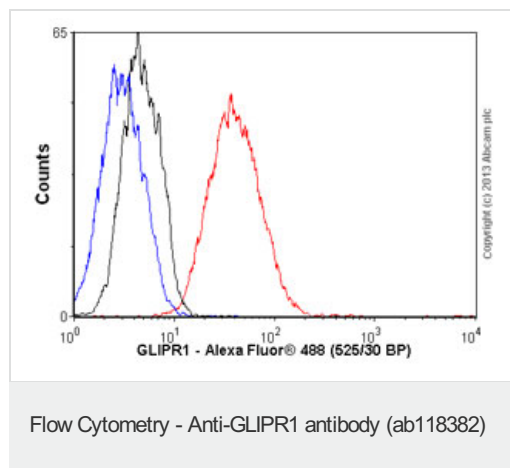
序列相似性

Belongs to the CRISP family.

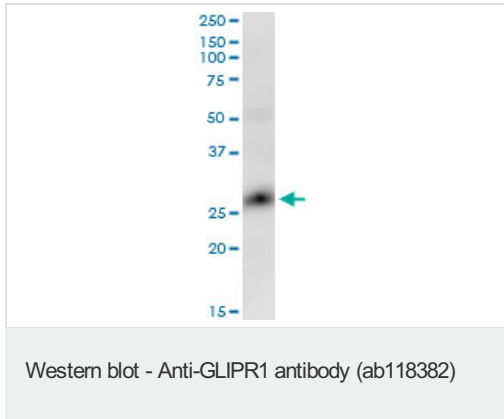
细胞定位

Membrane.

图片

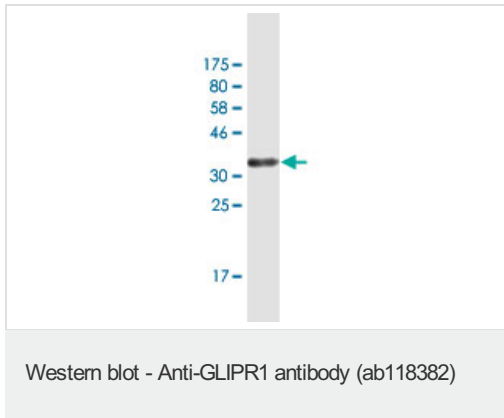


Overlay histogram showing HepG2 cells stained with ab118382 (red line). The cells were fixed with 80% methanol (5 min) and then permeabilized with 0.1% PBS-Tween for 20 min. The cells were then incubated in 1x PBS / 10% normal goat serum / 0.3M glycine to block non-specific protein-protein interactions followed by the antibody (ab118382, 0.1µg/1x10⁶ cells) for 30 min at 22°C. The secondary antibody used was Alexa Fluor® 488 goat anti-mouse IgG (H&L) ([ab150113](#)) at 1/2000 dilution for 30 min at 22°C. Isotype control antibody (black line) was mouse IgG2a [ICIGG2A] ([ab91361](#), 0.1µg/1x10⁶ cells) used under the same conditions. Unlabelled sample (blue line) was also used as a control. Acquisition of >5,000 events were collected using a 20mW Argon ion laser (488nm) and 525/30 bandpass filter.



Anti-GLIPR1 antibody (ab118382) at 5 µg/ml
+ HeLa cell lysate at 50 µg

Predicted band size: 30 kDa



Anti-GLIPR1 antibody (ab118382) at 5 µg/ml
+ recombinant immunogen at 0.2 µg/ml

Predicted band size: 30 kDa

Western blot against tagged recombinant immunogen using ab118382 antibody at 5µg/ml dilution. Predicted band size of immunogen is 34.58kDa.

Please note: All products are "FOR RESEARCH USE ONLY AND ARE NOT INTENDED FOR DIAGNOSTIC OR THERAPEUTIC USE"

Our Abpromise to you: Quality guaranteed and expert technical support

- Replacement or refund for products not performing as stated on the datasheet
- Valid for 12 months from date of delivery
- Response to your inquiry within 24 hours
- We provide support in Chinese, English, French, German, Japanese and Spanish
- Extensive multi-media technical resources to help you
- We investigate all quality concerns to ensure our products perform to the highest standards

If the product does not perform as described on this datasheet, we will offer a refund or replacement. For full details of the Abpromise, please visit <http://www.abcam.cn/abpromise> or contact our technical team.

Terms and conditions

- Guarantee only valid for products bought direct from Abcam or one of our authorized distributors