

Product datasheet

Anti-GFAP antibody ab53554

★★★★★ 20 Abreviews 56 References 5 图像

概述

产品名称	Anti-GFAP抗体
描述	山羊多克隆抗体to GFAP
宿主	Goat
经测试应用	适用于: IHC-FrFI, WB, Sandwich ELISA, IHC-P, IHC-Fr, IHC-FoFr, ICC/IF
种属反应性	与反应: Mouse, Rat, Human, Zebrafish 预测可用于: Cow, Dog
免疫原	Synthetic peptide corresponding to Human GFAP aa 417-430 (C terminal) (Cysteine residue). Sequence: DGEVIKESKQEHKD Run BLAST with Run BLAST with
阳性对照	WB: Mouse brain tissue lysate. IHC-P: Human cerebellum tissue.

性能

形式	Liquid
存放说明	Shipped at 4°C. Upon delivery aliquot and store at -20°C. Avoid freeze / thaw cycles.
存储溶液	Preservative: 0.02% Sodium Azide Constituents: 0.5% BSA, 5mg/ml Tris, pH 7.3
纯度	Immunogen affinity purified
纯化说明	Purified from goat serum by ammonium sulphate precipitation followed by antigen affinity chromatography using the immunizing peptide.
克隆	多克隆
同种型	IgG

应用

Our [Abpromise guarantee](#) covers the use of **ab53554** in the following tested applications.

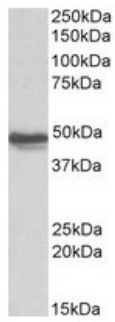
The application notes include recommended starting dilutions; optimal dilutions/concentrations should be determined by the end user.

应用	Ab评论	说明
IHC-FrFl	★★★★★	1/500 - 1/2000.
WB	★★★★☆	Use a concentration of 0.01 - 0.03 µg/ml. Detects a band of approximately 48 kDa (predicted molecular weight: 50 kDa).
Sandwich ELISA		Use a concentration of 5 - 10 µg/ml.
IHC-P	★★★★★	Use a concentration of 2 - 4 µg/ml. Perform heat mediated antigen retrieval with citrate buffer pH 6 before commencing with IHC staining protocol.
IHC-Fr	★★★★☆	Use at an assay dependent concentration.
IHC-FoFr	★★★★★	Use at an assay dependent concentration.
ICC/IF	★★★★★	Use at an assay dependent concentration. PubMed: 21943601

靶标

功能	GFAP, a class-III intermediate filament, is a cell-specific marker that, during the development of the central nervous system, distinguishes astrocytes from other glial cells.
组织特异性	Expressed in cells lacking fibronectin.
疾病相关	Defects in GFAP are a cause of Alexander disease (ALEXD) [MIM:203450]. Alexander disease is a rare disorder of the central nervous system. It is a progressive leukoencephalopathy whose hallmark is the widespread accumulation of Rosenthal fibers which are cytoplasmic inclusions in astrocytes. The most common form affects infants and young children, and is characterized by progressive failure of central myelination, usually leading to death usually within the first decade. Infants with Alexander disease develop a leukoencephalopathy with macrocephaly, seizures, and psychomotor retardation. Patients with juvenile or adult forms typically experience ataxia, bulbar signs and spasticity, and a more slowly progressive course.
序列相似性	Belongs to the intermediate filament family.
翻译后修饰	Phosphorylated by PKN1.
细胞定位	Cytoplasm. Associated with intermediate filaments.

图片



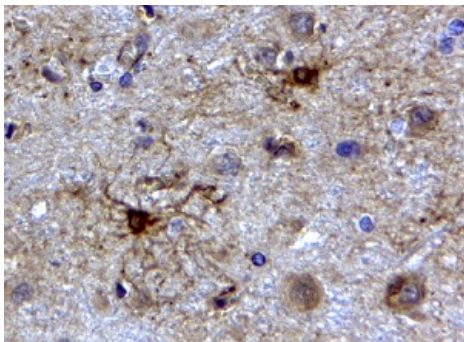
Western blot - Anti-GFAP antibody (ab53554)

Anti-GFAP antibody (ab53554) at 0.1 µg/ml +
Mouse Brain Lysate in RIPA Buffer at 35 µg

Developed using the ECL technique.

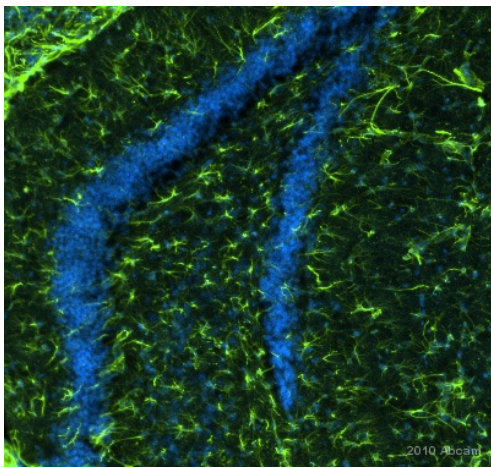
Predicted band size: 50 kDa

Primary incubation was 1 hour.



Immunohistochemistry (Formalin/PFA-fixed paraffin-
embedded sections) - Anti-GFAP antibody
(ab53554)

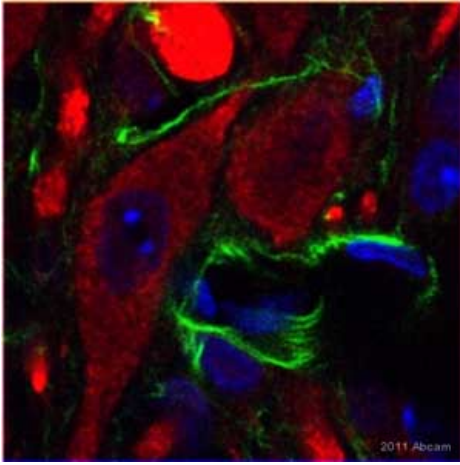
Immunohistochemical analysis of paraffin
embedded Human cerebellum tissue labeling
GFAP with ab53554 at 2 µg/ml. Steamed
antigen retrieval with citrate buffer pH 6, HRP-
staining.



Immunohistochemistry (Frozen sections) - Anti-
GFAP antibody (ab53554)

This image is courtesy of an Abreview submitted by
Judith Kranz

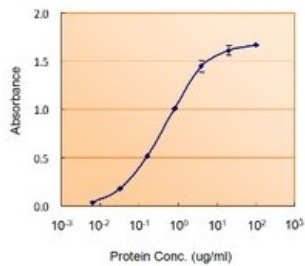
ab53554 staining GFAP in Mouse brain tissue
sections by Immunohistochemistry (IHC-Fr -
frozen sections). Tissue was fixed with
paraformaldehyde, permeabilized with TBS +
0.25% Triton X 100 and blocked with 10%
serum for 1 hour at 23°C. Samples were
incubated with primary antibody (1/1000 in
TBS + 0.25% Triton-X 100) for 16 hours at
4°C. A Cy2[®]-conjugated Donkey anti-goat IgG
polyclonal (1/200) was used as the secondary
antibody. The image shows GFAP (green)
and DAPI (blue) around the dentate gyrus.



ab53554 staining GFAP in Mongolian gerbil brain tissue sections by Immunohistochemistry - Free Floating. Samples were incubated with ab53554 at a 1/500 dilution in 1% BSA, 0.3% Triton X-100, 0.1% Saponin for 16 hours at 4°C. ab6566 Donkey polyclonal Secondary Antibody to anti-goat Cy5® (IgG - H&L)), pre-adsorbed was used as the secondary antibody at a 1/100 dilution (green). Nuclei are counterstained with DAPI.

Immunocytochemistry/ Immunofluorescence - Anti-GFAP antibody (ab53554)

Image courtesy of an anonymous Abreview.



ab53554 (5ug/ml) as the reporter with a capture rabbit antibody (5ug/ml).

Sandwich ELISA - Anti-GFAP antibody (ab53554)

Please note: All products are "FOR RESEARCH USE ONLY AND ARE NOT INTENDED FOR DIAGNOSTIC OR THERAPEUTIC USE"

Our Abpromise to you: Quality guaranteed and expert technical support

- Replacement or refund for products not performing as stated on the datasheet
- Valid for 12 months from date of delivery
- Response to your inquiry within 24 hours
- We provide support in Chinese, English, French, German, Japanese and Spanish
- Extensive multi-media technical resources to help you
- We investigate all quality concerns to ensure our products perform to the highest standards

If the product does not perform as described on this datasheet, we will offer a refund or replacement. For full details of the Abpromise, please visit <http://www.abcam.cn/abpromise> or contact our technical team.

Terms and conditions

- Guarantee only valid for products bought direct from Abcam or one of our authorized distributors