

## Product datasheet

# Anti-G-CSF antibody ab9691

★★★★☆ 6 Abreviews 2 References 4 图像

### 概述

产品名称	Anti-G-CSF抗体
描述	兔多克隆抗体to G-CSF
经测试应用	适用于: WB, ELISA, Neutralising, Sandwich ELISA, IHC-P, Flow Cyt
种属反应性	与反应: Human
免疫原	Highly pure (>98%) recombinant hG-CSF (human G-CSF).
阳性对照	

购买相配的WB阳性对照  
[Recombinant human G-CSF protein >](#)

### 性能

形式	Lyophilised:Reconstitute with 200µl of sterile water.
存放说明	Shipped at 4°C. Upon delivery aliquot and store at -20°C. Avoid repeated freeze / thaw cycles.
存储溶液	PBS, pH 7.4, no preservative, sterile filtered
纯度	Immunogen affinity purified
克隆	多克隆
同种型	IgG
轻链类型	unknown

### 应用

Our [Abpromise guarantee](#) covers the use of **ab9691** in the following tested applications.

The application notes include recommended starting dilutions; optimal dilutions/concentrations should be determined by the end user.

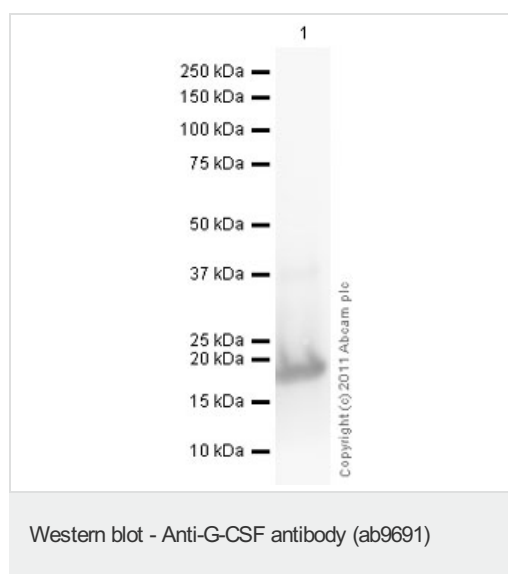
应用	Ab评论	说明
WB	★★★★☆	Use at an assay dependent concentration. To detect hG-CSF by Western Blot analysis this antibody can be used at a concentration of 0.1 - 0.2 µg/ml. Used in conjunction with compatible secondary reagents the detection limit for recombinant hG-CSF is 1.5 - 3.0 ng/lane, under either reducing or non-reducing conditions.

应用	Ab评论	说明
ELISA		Use at an assay dependent concentration. To detect hG-CSF by direct ELISA (using 100µl/well antibody solution) a concentration of at least 0.5µg/ml of this antibody is required. This antigen affinity purified antibody, in conjunction with compatible secondary reagents, allows the detection of 0.2 - 0.4 ng/well of recombinant hG-CSF.
Neutralising		Use at an assay dependent concentration. To yield one-half maximal inhibition [ND <sub>50</sub> ] of the biological activity of hG-CSF (0.5 ng/ml), a concentration of 0.04 - 0.06 µg/ml of this antibody is required.
Sandwich ELISA		Use a concentration of 0.5 µg/ml. Can be paired for Sandwich ELISA with <a href="#">Mouse monoclonal [5D7] to G-CSF (ab9818)</a> . For sandwich ELISA, use this antibody as Detection at 0.5µg/ml with <a href="#">Ab9818</a> as Capture.
IHC-P	★★★★☆	Use a concentration of 0.25 µg/ml.
Flow Cyt		1/300. <a href="#">ab171870</a> -Rabbit polyclonal IgG, is suitable for use as an isotype control with this antibody.

## 靶标

功能	Granulocyte/macrophage colony-stimulating factors are cytokines that act in hematopoiesis by controlling the production, differentiation, and function of 2 related white cell populations of the blood, the granulocytes and the monocytes-macrophages. This CSF induces granulocytes.
序列相似性	Belongs to the IL-6 superfamily.
翻译后修饰	O-glycan consists of Gal-GalNAc disaccharide which can be modified with up to two sialic acid residues (done in recombinantly expressed G-CSF from CHO cells).
细胞定位	Secreted.

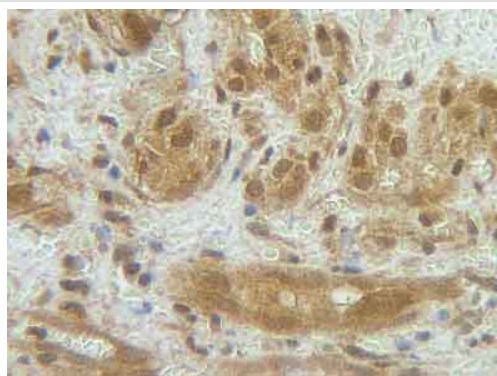
## 图片



Developed using the ECL technique

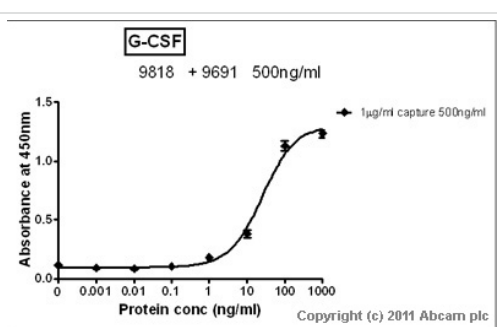
Performed under reducing conditions.

**Exposure time : 2 minutes**



Immunohistochemistry (Formalin/PFA-fixed paraffin-embedded sections) - Anti-G-CSF antibody (ab9691)

ab9691 staining G-CSF in human angiosarcoma section by Immunohistochemistry (Formalin/PFA fixed paraffin-embedded sections). Tissue underwent heat mediated antigen retrieval in sodium citrate buffer (pH 6.0). The primary antibody was used at 0.25 ug/ml and incubated with sample at 4°C overnight. A HRP-labeled polymer detection system was used with a DAB chromogen.



Sandwich ELISA - Anti-G-CSF antibody (ab9691)

Standard Curve for G-CSF (Analyte: [ab51298](#)) dilution range 1pg/ml to 1ug/ml using Capture Antibody [Mouse monoclonal \[5D7\] to G-CSF \(ab9818\)](#) at 1ug/ml and Detector Antibody [Rabbit polyclonal to G-CSF \(ab9691\)](#) at 0.5ug/ml



Western blot - Anti-G-CSF antibody (ab9691)

Developed using the ECL technique  
Performed under reducing conditions.

**Please note:** All products are "FOR RESEARCH USE ONLY AND ARE NOT INTENDED FOR DIAGNOSTIC OR THERAPEUTIC USE"

**Our Abpromise to you: Quality guaranteed and expert technical support**

- Replacement or refund for products not performing as stated on the datasheet
- Valid for 12 months from date of delivery

- Response to your inquiry within 24 hours
- We provide support in Chinese, English, French, German, Japanese and Spanish
- Extensive multi-media technical resources to help you
- We investigate all quality concerns to ensure our products perform to the highest standards

If the product does not perform as described on this datasheet, we will offer a refund or replacement. For full details of the Abpromise, please visit <http://www.abcam.cn/abpromise> or contact our technical team.

### **Terms and conditions**

---

- Guarantee only valid for products bought direct from Abcam or one of our authorized distributors