

Product datasheet

Anti-Flotillin 1 antibody ab41927

敲除 验证

★★★★☆ 10 Abreviews 19 References 8 图像

概述

产品名称	Anti-Flotillin 1抗体
描述	兔多克隆抗体to Flotillin 1
宿主	Rabbit
特异性	This target has been reported to show both cytoplasmic and nuclear localisation (PMID: 15713644).
经测试应用	适用于: IHC-P, ICC/IF, WB, IP
种属反应性	与反应: Mouse, Rat, Dog, Human 预测可用于: a wide range of other species
免疫原	Synthetic peptide conjugated to KLH derived from within residues 1 - 100 of Human Flotillin 1. 参阅Abcam的专有抗源政策(Peptide available as ab41926 .)
阳性对照	ab41927 gave a positive result in Human Lung tissue lysate, Human Brain tissue lysate and Hela whole cell lysate.

性能

形式	Liquid
存放说明	Shipped at 4°C. Store at +4°C short term (1-2 weeks). Upon delivery aliquot. Store at -20°C or -80°C. Avoid freeze / thaw cycle.
存储溶液	Preservative: 0.02% Sodium Azide Constituents: 1% BSA, PBS, pH 7.4
纯度	Immunogen affinity purified
克隆	多克隆
同种型	IgG

应用

Our [Abpromise guarantee](#) covers the use of **ab41927** in the following tested applications.

The application notes include recommended starting dilutions; optimal dilutions/concentrations should be determined by the end user.

应用	Ab评论	说明
IHC-P	★★★★★	1/100. Perform heat mediated antigen retrieval before commencing with IHC staining protocol.
ICC/IF	★★★★☆	1/200. Fix cells with methanol
WB	★★★★☆	Use a concentration of 1 µg/ml. Detects a band of approximately 47 kDa (predicted molecular weight: 47 kDa). Can be blocked with Human Flotillin 1 peptide (ab41926) .
IP	★★★★☆	Use at an assay dependent concentration.

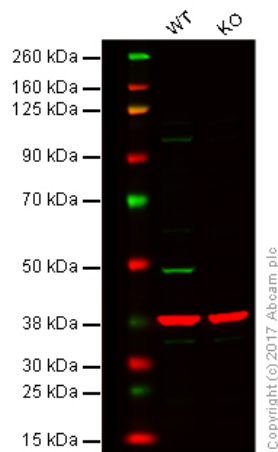
靶标

功能 May act as a scaffolding protein within caveolar membranes, functionally participating in formation of caveolae or caveolae-like vesicles.

序列相似性 Belongs to the band 7/mec-2 family. Flotillin subfamily.

细胞定位 Cell membrane. Membrane > caveola. Melanosome. Endosome. Membrane-associated protein of caveolae. Identified by mass spectrometry in melanosome fractions from stage I to stage IV.

图片



Western blot - Anti-Flotillin 1 antibody (ab41927)

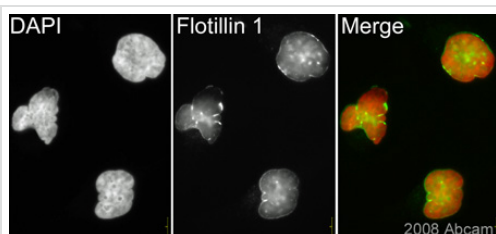
Lane 1: Wild-type HAP1 whole cell lysate (20 μ g)

Lane 2: Flotillin 1 knockout HAP1 whole cell lysate (20 μ g)

Lanes 1 - 4: Merged signal (red and green).

Green - ab41927 observed at 47 kDa. Red - loading control, ab9484, observed at 37 kDa.

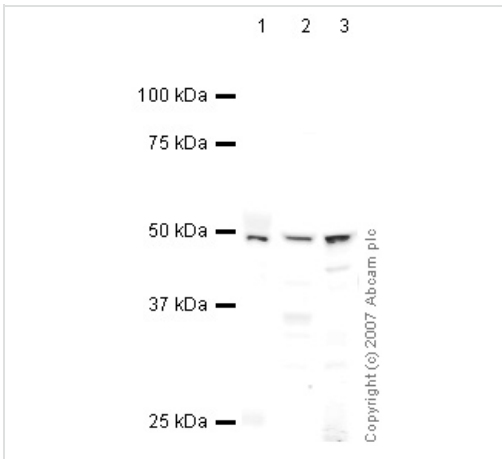
ab41927 was shown to specifically react with Flotillin 1 in wild-type HAP1 cells as signal was lost in Flotillin 1 knockout cells. Wild-type and Flotillin 1 knockout samples were subjected to SDS-PAGE. ab41927 and ab9484 (Mouse anti-GAPDH loading control) were incubated overnight at 4°C at 1 μ g/ml and 1/20000 dilution respectively. Blots were developed with Goat anti-Rabbit IgG H&L (IRDye® 800CW) preabsorbed ab216773 and Goat anti-Mouse IgG H&L (IRDye® 680RD) preabsorbed ab216776 secondary antibodies at 1/20000 dilution for 1 hour at room temperature before imaging.



Immunocytochemistry/ Immunofluorescence - Anti-Flotillin 1 antibody (ab41927)

This image is part of an abreview submitted by Dr. Kirk McManus

ab41927 (1/200) staining Flotillin 1 in HeLa cells (green). Cells were fixed with Methanol and counterstained with DAPI in order to highlight the nucleus (red). Please refer to abreview for further experimental details.



Western blot - Anti-Flotillin 1 antibody (ab41927)

All lanes : Anti-Flotillin 1 antibody (ab41927) at 1 µg/ml

Lane 1 : Lung (Human) Tissue Lysate

Lane 2 : HeLa (Human epithelial carcinoma cell line) Whole Cell Lysate

Lane 3 : Human brain tissue lysate - total protein (ab29466)

Lysates/proteins at 10 µg per lane.

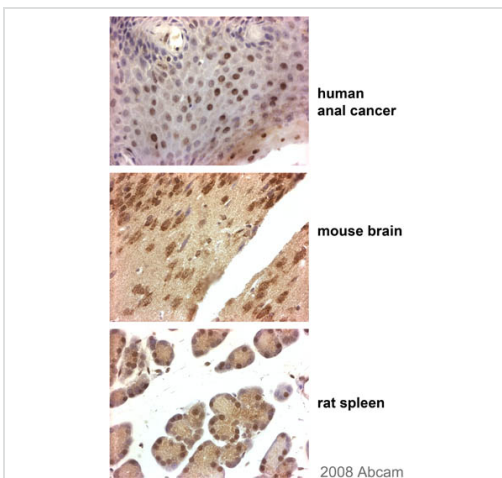
Secondary

All lanes : IRDye 680 Conjugated Goat Anti-Rabbit IgG (H+L) at 1/10000 dilution

Performed under reducing conditions.

Predicted band size: 47 kDa

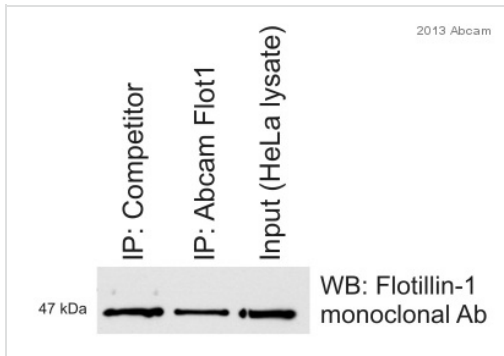
Observed band size: 47 kDa



Immunohistochemistry (Formalin/PFA-fixed paraffin-embedded sections) - Anti-Flotillin 1 antibody (ab41927)

This image is courtesy of an Abreview submitted by Antibody Solutions Ltd.

ab41927 (1/100) staining Flotillin 1 in paraffin embedded - Human (anal cancer), Mouse (brain) and Rat (spleen) tissues. Tissue sections underwent paraformaldehyde fixation, heat mediated antigen retrieval using Citrate Buffer pH 6.0 and were blocked using sequential peroxidase and protein block (prediluted). Please refer to abreview for further experimental details.



Immunoprecipitation - Anti-Flotillin 1 antibody (ab41927)

This image is courtesy of an Abreview submitted by Prof Ritva Tikkanen

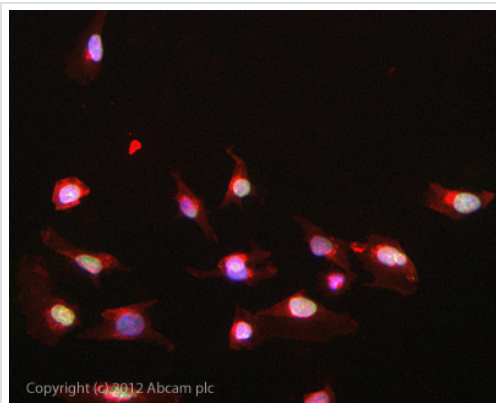
Flotillin 1 immunoprecipitation from Human HeLa whole cell lysate using ab41927. 750 µg of cell lysate was incubated with primary antibody (1/500) and matrix (Protein A) and incubated for 16 hours at 4°C.

Lane 1 : anti-Flotillin 2 IP (using non-Abcam antibody)

Lane 2 : anti-Flotillin 2 IP (using ab41927)

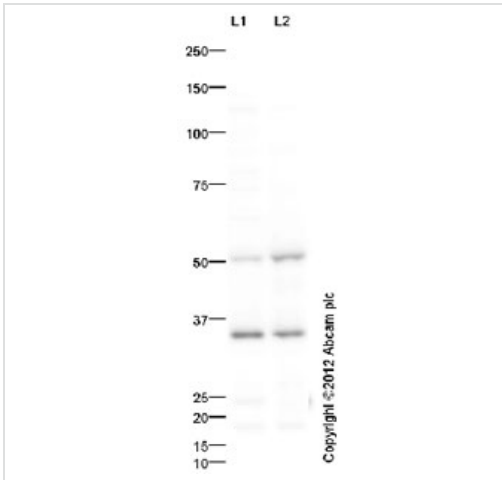
Lane 3 : Input (HeLa cell lysate)

Western blot detection : mouse anti-Flotillin 1 antibody + HRP donkey anti-mouse polyclonal secondary antibody



Immunocytochemistry/ Immunofluorescence - Anti-Flotillin 1 antibody (ab41927)

ICC/IF image of ab41927 stained HeLa cells. The cells were 4% formaldehyde fixed (10 min) and then incubated in 1%BSA / 10% normal goat serum / 0.3M glycine in 0.1% PBS-Tween for 1h to permeabilise the cells and block non-specific protein-protein interactions. The cells were then incubated with the antibody ab41927 at 1µg/ml overnight at +4°C. The secondary antibody (green) was DyLight® 488 goat anti- rabbit (ab96899) IgG (H+L) used at a 1/1000 dilution for 1h. Alexa Fluor® 594 WGA was used to label plasma membranes (red) at a 1/200 dilution for 1h. DAPI was used to stain the cell nuclei (blue) at a concentration of 1.43µM.



Western blot - Anti-Flotillin 1 antibody (ab41927)

All lanes : Anti-Flotillin 1 antibody (ab41927) at 1 µg/ml

Lane 1 : HeLa (Human epithelial carcinoma cell line) Whole Cell Lysate

Lane 2 : Human brain tissue lysate - total protein (ab29466)

Lysates/proteins at 10 µg per lane.

Secondary

All lanes : Goat polyclonal to Rabbit IgG - H&L - Pre-Adsorbed (HRP) (ab65484) at 1/3000 dilution

Developed using the ECL technique.

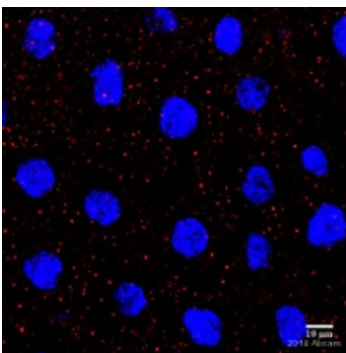
Performed under reducing conditions.

Predicted band size: 47 kDa

Observed band size: 50 kDa

Additional bands at: 35 kDa. We are unsure as to the identity of these extra bands.

Exposure time: 4 minutes



IHC - Wholemount - Anti-Flotillin 1 antibody (ab41927)

This image is courtesy of an anonymous Abreview.

Immunohistochemical analysis of wholemount *Xenopus laevis* embryo, labelling Flotillin 1 with ab41927, diluted 1/50 and incubated in 10% Lamb Serum, 0.2% BSA, 0.1% TritonX/TBS for 14 hours at 4°C. A Goat Anti-Rabbit IgG (H+L) polyclonal secondary conjugated to Alexa Fluor® 555 was used, diluted 1/500. DAPI staining.

Please note: All products are "FOR RESEARCH USE ONLY AND ARE NOT INTENDED FOR DIAGNOSTIC OR THERAPEUTIC USE"

Our Promise to you: Quality guaranteed and expert technical support

- Replacement or refund for products not performing as stated on the datasheet
- Valid for 12 months from date of delivery
- Response to your inquiry within 24 hours

- We provide support in Chinese, English, French, German, Japanese and Spanish
- Extensive multi-media technical resources to help you
- We investigate all quality concerns to ensure our products perform to the highest standards

If the product does not perform as described on this datasheet, we will offer a refund or replacement. For full details of the Abpromise, please visit <http://www.abcam.cn/abpromise> or contact our technical team.

Terms and conditions

- Guarantee only valid for products bought direct from Abcam or one of our authorized distributors