

Product datasheet

Anti-FOXF2 antibody ab23306

4 References 2 图像

概述

产品名称	Anti-FOXF2抗体
描述	兔多克隆抗体to FOXF2
特异性	ab23306 reacts with Forkhead box protein F2 (FOXF2)
经测试应用	适用于: ChIP, IHC-P, WB
种属反应性	与反应: Mouse, Human
免疫原	Synthetic peptide: CKSAGGGGAG AGSGGAKKAS SGLRRPEKPP YSYIALIMMA IQSSPSKRLT, corresponding to a region within N terminal amino acids 73-122 of Human FOXF2 <a href="#">Run BLAST with ExPASy</a> <a href="#">Run BLAST with NCBI</a>
阳性对照	HepG2 cell lysate. Human kidney.

性能

形式	Liquid
存放说明	Shipped at 4°C. Store at +4°C short term (1-2 weeks). Upon delivery aliquot. Store at -20°C. Avoid freeze / thaw cycle.
存储溶液	Constituents: PBS, 2% Sucrose
纯度	Protein A purified
克隆	多克隆
同种型	IgG

应用

Our [Abpromise guarantee](#) covers the use of **ab23306** in the following tested applications.

The application notes include recommended starting dilutions; optimal dilutions/concentrations should be determined by the end user.

应用	Ab 评论	说明
ChIP		Use at an assay dependent concentration.

应用	Ab 评论	说明
----	-------	----

IHC-P Use at an assay dependent concentration.

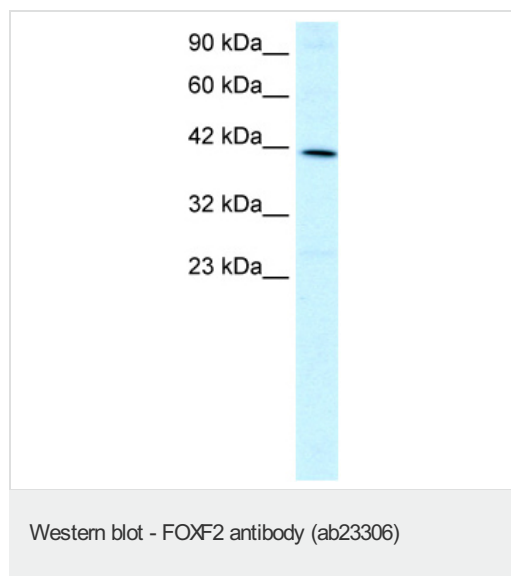
WB Use a concentration of 1 µg/ml. Detects a band of approximately 40 kDa (predicted molecular weight: 46 kDa). Good results were obtained when blocked with 5% non-fat dry milk in 0.05% PBS-T.

## 靶标

**相关性** FOXF2 encodes forkhead box F2, one of many human homologues of the *Drosophila melanogaster* transcription factor forkhead. FOXF2 is expressed in lung and placenta, and has been shown to transcriptionally activate several lung-specific genes.

**细胞定位** Nuclear

## 图片



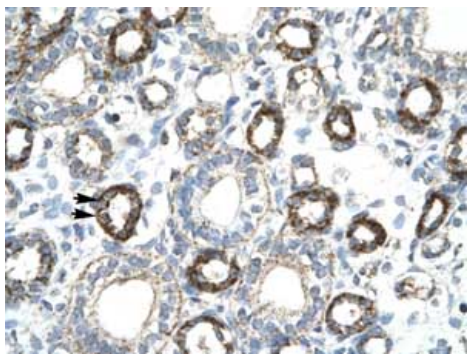
Anti-FOXF2 antibody (ab23306) at 1.2 µg/ml  
+ HepG2 cell lysate.

### Secondary

HRP conjugated anti-Rabbit IgG should be diluted in 1/50,000 - 100,000

**Predicted band size** : 46 kDa

**Observed band size** : 40 kDa



ab23306, at 4.0 - 8.0ug/ml staining human FOXF2 in human kidney by Immunohistochemistry, Paraffin embedded tissue. Positive cells marked by arrows are Epithelial cells of renal tubule. Magnification 400 x.

Immunohistochemistry (Paraffin-embedded sections)  
- FOXF2 antibody (ab23306)

**Please note:** All products are "FOR RESEARCH USE ONLY AND ARE NOT INTENDED FOR DIAGNOSTIC OR THERAPEUTIC USE"

### Our Abpromise to you: Quality guaranteed and expert technical support

- Replacement or refund for products not performing as stated on the datasheet
- Valid for 12 months from date of delivery
- Response to your inquiry within 24 hours
- We provide support in Chinese, English, French, German, Japanese and Spanish
- Extensive multi-media technical resources to help you
- We investigate all quality concerns to ensure our products perform to the highest standards

If the product does not perform as described on this datasheet, we will offer a refund or replacement. For full details of the Abpromise, please visit <http://www.abcam.cn/abpromise> or contact our technical team.

### Terms and conditions

- Guarantee only valid for products bought direct from Abcam or one of our authorized distributors