

## Product datasheet

# Anti-FKBP12 antibody ab24373

敲除 验证

★★★★★ 4 Abreviews 1 References 4 图像

### 概述

产品名称	Anti-FKBP12抗体
描述	兔多克隆抗体to FKBP12
宿主	Rabbit
经测试应用	适用于: IHC-P, WB
种属反应性	与反应: Mouse, Rat, Human 预测可用于: Cow, Pig ▲
免疫原	Synthetic peptide conjugated to KLH derived from within residues 1 - 100 of Human FKBP12. 参阅Abcam的专有抗源政策 (Peptide available as <a href="#">ab25840</a> .)
阳性对照	Human Brain, Mouse Brain, Rat Brain

### 性能

形式	Liquid
存放说明	Shipped at 4°C. Store at +4°C short term (1-2 weeks). Upon delivery aliquot. Store at -20°C or -80°C. Avoid freeze / thaw cycle.
存储溶液	Preservative: 0.02% Sodium Azide Constituents: 1% BSA, PBS, pH 7.4
纯度	Immunogen affinity purified
克隆	多克隆
同种型	IgG

### 应用

Our [Abpromise guarantee](#) covers the use of **ab24373** in the following tested applications.

The application notes include recommended starting dilutions; optimal dilutions/concentrations should be determined by the end user.

应用	Ab评论	说明
IHC-P	★★★★★	1/2000.

应用	Ab评论	说明
WB	★★★★★	Use a concentration of 1 µg/ml. Detects a band of approximately 12 kDa (predicted molecular weight: 12 kDa).

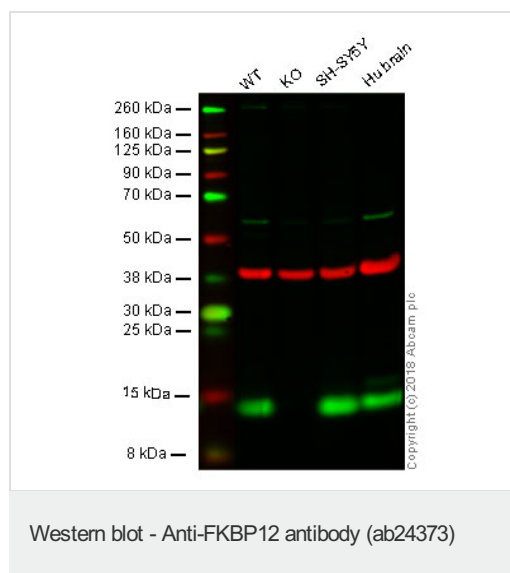
## 靶标

**功能** May play a role in modulation of ryanodine receptor isoform-1 (RYR-1), a component of the calcium release channel of skeletal muscle sarcoplasmic reticulum. There are four molecules of FKBP12 per skeletal muscle RYR. PPlases accelerate the folding of proteins. It catalyzes the cis-trans isomerization of proline imidic peptide bonds in oligopeptides.

**序列相似性** Belongs to the FKBP-type PPlase family. FKBP1 subfamily.  
Contains 1 PPlase FKBP-type domain.

**细胞定位** Cytoplasm.

## 图片



**Lane 1:** Wild-type HAP1 whole cell lysate (20 µg)

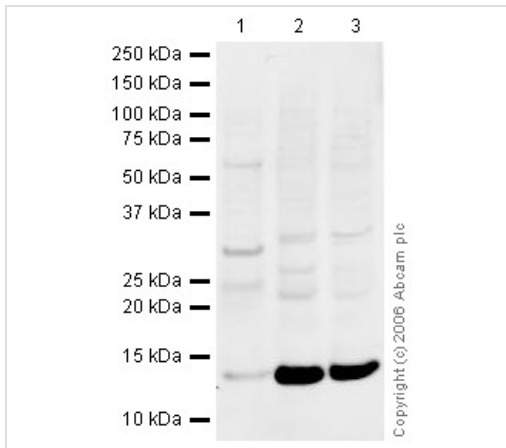
**Lane 2:** FKBP1A knockout HAP1 whole cell lysate (20 µg)

**Lane 3:** SH-SY5Y whole cell lysate (20 µg)

**Lane 4:** Human brain whole tissue lysate (20 µg)

**Lanes 1 - 4:** Merged signal (red and green). Green - ab24373 observed at 12 kDa. Red - loading control, [ab9484](#), observed at 37 kDa.

ab24373 was shown to specifically react with FKBP12 in wild-type HAP1 cells as signal was lost in FKBP1A knockout cells. Wild-type and FKBP1A knockout samples were subjected to SDS-PAGE. ab24373 and [ab9484](#) (Mouse anti-GAPDH loading control) were incubated overnight at 4°C at 1 µg/ml and 1/20000 dilution respectively. Blots were developed with Goat anti-Rabbit IgG H&L (IRDye® 800CW) preabsorbed [ab216773](#) and Goat anti-Mouse IgG H&L (IRDye® 680RD) preabsorbed [ab216776](#) secondary antibodies at 1/20000 dilution for 1 hour at room temperature before imaging.



Western blot - Anti-FKBP12 antibody (ab24373)

**All lanes :** Anti-FKBP12 antibody (ab24373)  
at 1 µg/ml

**Lane 1 :** Human Brain Tissue Lysate

**Lane 2 :** Mouse Brain Tissue Lysate

**Lane 3 :** Rat Brain Tissue Lysate

Lysates/proteins at 20 µg per lane.

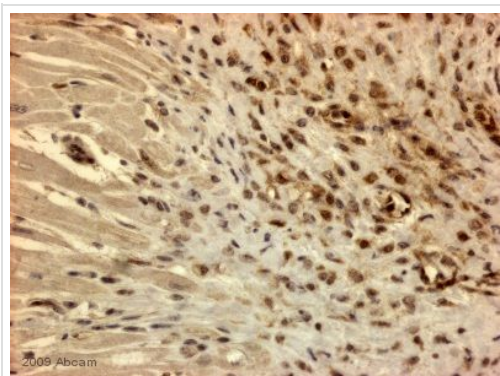
### Secondary

**All lanes :** Goat polyclonal to Rabbit IgG  
(Alexa Fluor® 680) at 1/10000 dilution

Performed under reducing conditions.

**Predicted band size:** 12 kDa

**Observed band size:** 12 kDa



Immunohistochemistry (Formalin/PFA-fixed paraffin-embedded sections) - Anti-FKBP12 antibody (ab24373)

This image is courtesy of an Abreview submitted by Antibody Solutions Ltd.

ab24373 staining FKBP12 in human heart tissue section by Immunohistochemistry (Formalin/PFA-fixed paraffin-embedded sections). Tissue was fixed in formaldehyde before heat mediated antigen retrieval and then blocked for 45 minutes at 20°C (5 minutes of peroxidase block and 10 minutes of protein block). The primary antibody was diluted, 1/2000 in PBS and incubated with sample for 45 minutes at 21°C. A HRP conjugated goat polyclonal to rabbit IgG was used undiluted as secondary.



Western blot - Anti-FKBP12 antibody (ab24373)

**Please note:** All products are "FOR RESEARCH USE ONLY AND ARE NOT INTENDED FOR DIAGNOSTIC OR THERAPEUTIC USE"

### Our Abpromise to you: Quality guaranteed and expert technical support

- Replacement or refund for products not performing as stated on the datasheet
- Valid for 12 months from date of delivery
- Response to your inquiry within 24 hours
- We provide support in Chinese, English, French, German, Japanese and Spanish
- Extensive multi-media technical resources to help you
- We investigate all quality concerns to ensure our products perform to the highest standards

If the product does not perform as described on this datasheet, we will offer a refund or replacement. For full details of the Abpromise, please visit <http://www.abcam.cn/abpromise> or contact our technical team.

### Terms and conditions

- Guarantee only valid for products bought direct from Abcam or one of our authorized distributors