

Product datasheet

Anti-FAM20B antibody ab121261

2 图像

概述

产品名称	Anti-FAM20B抗体
描述	兔多克隆抗体to FAM20B
宿主	Rabbit
经测试应用	适用于: IHC-P, ICC/IF
种属反应性	与反应: Human
免疫原	Recombinant fragment, corresponding to amino acids 258-402 of Human FAM20B.
阳性对照	Human duodenum tissue.

性能

形式	Liquid
存放说明	Shipped at 4°C. Upon delivery aliquot and store at -20°C. Avoid freeze / thaw cycles.
存储溶液	pH: 7.20 Preservative: 0.02% Sodium azide Constituents: 59% PBS, 40% Glycerol
纯度	Immunogen affinity purified
克隆	多克隆
同种型	IgG

应用

Our [Abpromise guarantee](#) covers the use of **ab121261** in the following tested applications.

The application notes include recommended starting dilutions; optimal dilutions/concentrations should be determined by the end user.

应用	Ab 评论	说明
----	-------	----

IHC-P		1/200 - 1/500. Perform heat mediated antigen retrieval with citrate buffer pH 6 before commencing with IHC staining protocol. Perform Heat Induced Epitope Retrieval (HIER) at pH 6 using a pressure boiler as heat source.
-------	--	-----------------------------------------------------------------------------------------------------------------------------------------------------------------------------------------------------------------------------

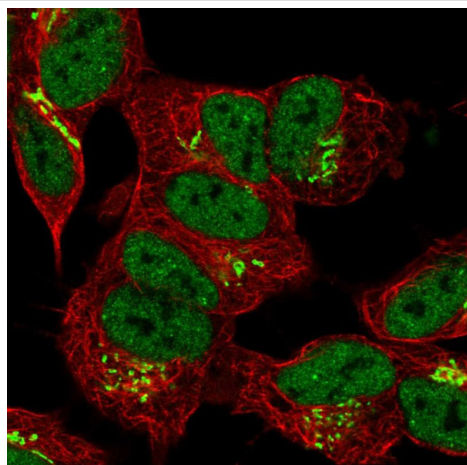
应用	Ab 评论	说明
----	-------	----

ICC/IF Use a concentration of 1 - 4 µg/ml.
 Fixation/Permeabilization: PFA/Triton X-100.

靶标

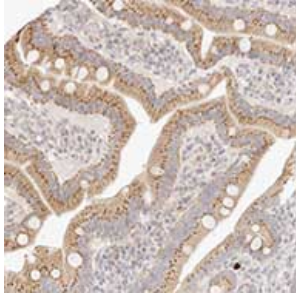
功能	Responsible for the 2-O-phosphorylation of xylose in the glycosaminoglycan-protein linkage region of proteoglycans thereby regulating the amount of mature GAG chains. Sulfated glycosaminoglycans (GAGs), including heparan sulfate and chondroitin sulfate, are synthesized on the so-called common GAG-protein linkage region (GlcUAβ1-3Galβ1-3Galβ1-4Xylβ1-O-Ser) of core proteins, which is formed by the stepwise addition of monosaccharide residues by the respective specific glycosyltransferases. Xylose 2-o-phosphorylation may influence the catalytic activity of B3GAT3 (GlcAT-I) which completes the precursor tetrasaccharide of GAG-protein linkage regions on which the repeating disaccharide region is synthesized.
组织特异性	Widely expressed.
序列相似性	Belongs to the FAM20 family.
细胞定位	Golgi apparatus membrane.

图片



Immunocytochemistry/Immunofluorescence analysis of SH-SY5Y cells labelling FAM20B with ab121261 shows positivity in the Golgi apparatus & nucleus but excluded from the nucleoli.

Immunocytochemistry/ Immunofluorescence - Anti-FAM20B antibody (ab121261)



ab121261, at 1/200 dilution, staining FAM20B in paraffin-embedded Human duodenum tissue by Immunohistochemistry, showing granular cytoplasmic positivity in glandular cells.

Immunohistochemistry (Formalin/PFA-fixed paraffin-embedded sections) - Anti-FAM20B antibody (ab121261)

Please note: All products are "FOR RESEARCH USE ONLY AND ARE NOT INTENDED FOR DIAGNOSTIC OR THERAPEUTIC USE"

Our Abpromise to you: Quality guaranteed and expert technical support

- Replacement or refund for products not performing as stated on the datasheet
- Valid for 12 months from date of delivery
- Response to your inquiry within 24 hours
- We provide support in Chinese, English, French, German, Japanese and Spanish
- Extensive multi-media technical resources to help you
- We investigate all quality concerns to ensure our products perform to the highest standards

If the product does not perform as described on this datasheet, we will offer a refund or replacement. For full details of the Abpromise, please visit <http://www.abcam.cn/abpromise> or contact our technical team.

Terms and conditions

- Guarantee only valid for products bought direct from Abcam or one of our authorized distributors