

Product datasheet

Anti-Estrogen Related Receptor beta antibody ab19331

★★★★☆ 2 Abreviews 3 References 2 图像

概述

产品名称	Anti-Estrogen Related Receptor beta抗体
描述	兔多克隆抗体to Estrogen Related Receptor beta
宿主	Rabbit
经测试应用	适用于: IHC-Fr, WB, IP, ICC/IF
种属反应性	与反应: Mouse, Rat
免疫原	Synthetic peptide: DYELSQRHEEPRR , corresponding to amino acids 376-388 of Mouse Estrogen Related Receptor beta. Run BLAST with Run BLAST with
阳性对照	rat kidney lysate

性能

形式	Liquid
存放说明	Shipped at 4°C. Upon delivery aliquot and store at -20°C or -80°C. Avoid repeated freeze / thaw cycles.
存储溶液	Preservative: 0.05% Sodium Azide Constituents: PBS, 1mg/ml BSA
纯度	Immunogen affinity purified
克隆	多克隆
同种型	IgG

应用

Our [Abpromise guarantee](#) covers the use of **ab19331** in the following tested applications.

The application notes include recommended starting dilutions; optimal dilutions/concentrations should be determined by the end user.

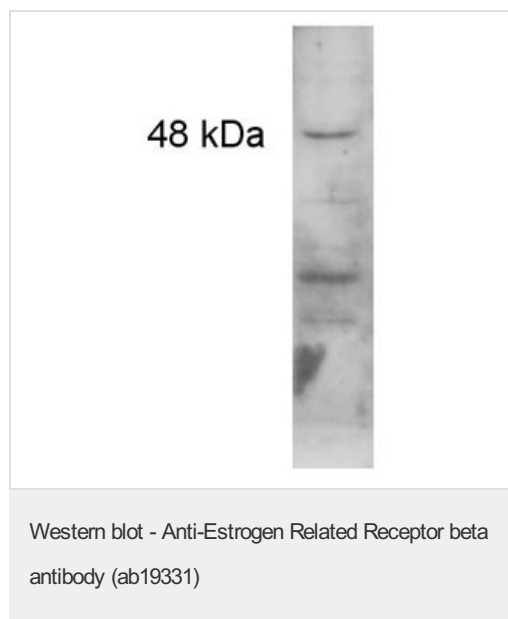
应用	Ab评论	说明
IHC-Fr		Use at an assay dependent concentration. PubMed: 18179891

应用	Ab评论	说明
WB		Use a concentration of 2 µg/ml. Detects a band of approximately 48 kDa (predicted molecular weight: 48 kDa).
IP		Use at an assay dependent concentration.
ICC/IF	★★★★☆	1/50 - 1/200.

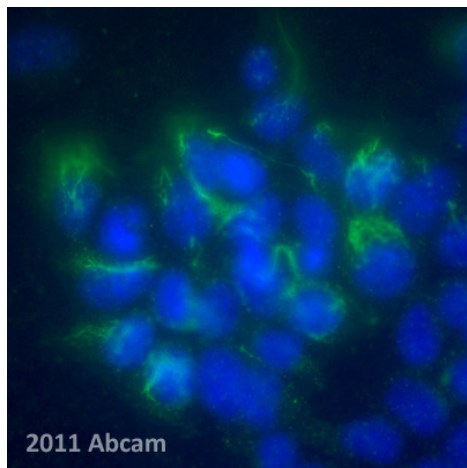
靶标

功能	Nuclear receptor, may regulate ESR1 transcriptional activity.
疾病相关	Defects in ESRRB are the cause of deafness autosomal recessive type 35 (DFNB35) [MIM:608565]. DFNB35 is a form of sensorineural hearing loss. Sensorineural deafness results from damage to the neural receptors of the inner ear, the nerve pathways to the brain, or the area of the brain that receives sound information.
序列相似性	Belongs to the nuclear hormone receptor family. NR3 subfamily. Contains 1 nuclear receptor DNA-binding domain.
细胞定位	Nucleus.

图片



Western blot detection of Estrogen Related Receptor beta from 100 µg of rat kidney lysate (1:500).



ab19331 staining Estrogen Related Receptor Beta protein on mouse embryonic stem cell by ICC/IF. The cells were fixed in 1:1 methanol:acetone and blocked in 0.1% BSA plus 1% serum, for 30 minutes at 21°C. The primary antibody was diluted 1/100 and incubated with the cells for 2 hours at 21°C. An Alexa Fluor® 488 conjugated goat anti-rabbit IgG, diluted 1/200, was used as the secondary antibody.

Immunocytochemistry/ Immunofluorescence - Anti-Estrogen Related Receptor beta antibody (ab19331)

This image is courtesy of an anonymous abreviewer.

Please note: All products are "FOR RESEARCH USE ONLY AND ARE NOT INTENDED FOR DIAGNOSTIC OR THERAPEUTIC USE"

Our Abpromise to you: Quality guaranteed and expert technical support

- Replacement or refund for products not performing as stated on the datasheet
- Valid for 12 months from date of delivery
- Response to your inquiry within 24 hours
- We provide support in Chinese, English, French, German, Japanese and Spanish
- Extensive multi-media technical resources to help you
- We investigate all quality concerns to ensure our products perform to the highest standards

If the product does not perform as described on this datasheet, we will offer a refund or replacement. For full details of the Abpromise, please visit <http://www.abcam.cn/abpromise> or contact our technical team.

Terms and conditions

- Guarantee only valid for products bought direct from Abcam or one of our authorized distributors