

## Product datasheet

# Anti-Endothelin B Receptor antibody ab117529

★★★★☆ 3 Abreviews 3 References 5 图像

### 概述

<b>产品名称</b>	Anti-Endothelin B Receptor抗体
<b>描述</b>	兔多克隆抗体to Endothelin B Receptor
<b>经测试应用</b>	<b>适用于:</b> ICC, IHC-Fr, WB, IHC-P, ICC/IF
<b>种属反应性</b>	<b>与反应:</b> Mouse, Human <b>预测可用于:</b> Rabbit, Goat, Horse, Chicken, Cow, Dog, Pig, Rhesus monkey
<b>免疫原</b>	Synthetic peptide: KANDHGYDNFRSSNKYSSS conjugated to KLH, corresponding to C terminal amino acids 424-442 of Mouse Endothelin B Receptor.  <a href="#">Run BLAST with</a> <a href="#">Run BLAST with</a>
<b>阳性对照</b>	Mouse lung tissue; Mouse brain lysate; Endothelin B Receptor transfected cells

### 性能

<b>形式</b>	Liquid
<b>存放说明</b>	Shipped at 4°C. Upon delivery aliquot and store at -20°C. Avoid freeze / thaw cycles.
<b>存储溶液</b>	Preservative: 0.02% Sodium azide Constituent: 99% Whole serum
<b>纯度</b>	Whole antiserum
<b>克隆</b>	多克隆
<b>同种型</b>	IgG

### 应用

Our [Abpromise guarantee](#) covers the use of **ab117529** in the following tested applications.

The application notes include recommended starting dilutions; optimal dilutions/concentrations should be determined by the end user.

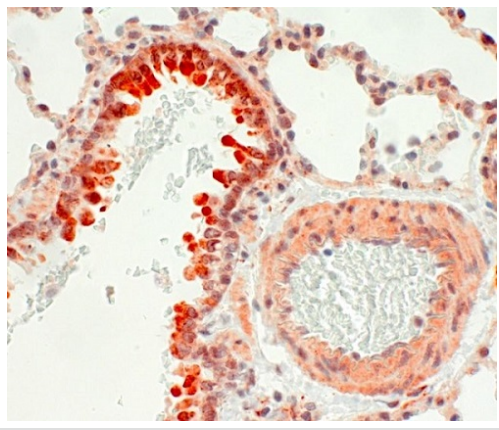
应用	Ab评论	说明
ICC		1/5000.

应用	Ab评论	说明
IHC-Fr		1/500 - 1/2000.
WB		1/5000. Predicted molecular weight: 50 kDa.
IHC-P	★★★★☆	1/2000.
ICC/IF	★★★★☆	1/5000.

## 靶标

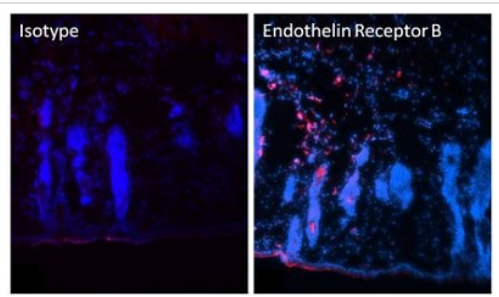
<b>功能</b>	Non-specific receptor for endothelin 1, 2, and 3. Mediates its action by association with G proteins that activate a phosphatidylinositol-calcium second messenger system.
<b>组织特异性</b>	Expressed in placental stem villi vessels, but not in cultured placental villi smooth muscle cells.
<b>疾病相关</b>	<p>Defects in EDNRB are a cause of Waardenburg syndrome type 4A (WS4A) [MIM:277580]; also known as Waardenburg-Shah syndrome. WS4A is characterized by the association of Waardenburg features (depigmentation and deafness) and the absence of enteric ganglia in the distal part of the intestine (Hirschsprung disease).</p> <p>Defects in EDNRB are the cause of Hirschsprung disease type 2 (HSCR2) [MIM:600155]; also known as aganglionic megacolon (MGC). HSCR2 is a congenital disorder characterized by absence of enteric ganglia along a variable length of the intestine. It is the most common cause of congenital intestinal obstruction. Early symptoms range from complete acute neonatal obstruction, characterized by vomiting, abdominal distention and failure to pass stool, to chronic constipation in the older child.</p> <p>Defects in EDNRB are the cause of ABCD syndrome (ABCDS) [MIM:600501]. ABCD syndrome is an autosomal recessive syndrome characterized by albinism, black lock at temporal occipital region, bilateral deafness, aganglionosis of the large intestine and total absence of neurocytes and nerve fibers in the small intestine.</p>
<b>序列相似性</b>	Belongs to the G-protein coupled receptor 1 family. Endothelin receptor subfamily. EDNRB sub-subfamily.
<b>翻译后修饰</b>	Palmitoylation of Cys-402 was confirmed by the palmitoylation of Cys-402 in a deletion mutant lacking both Cys-403 and Cys-405.
<b>细胞定位</b>	Cell membrane.

## 图片



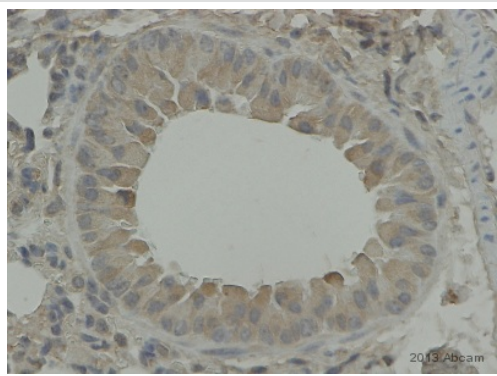
Immunohistochemistry (Formalin/PFA-fixed paraffin-embedded sections) - Anti-Endothelin B Receptor antibody (ab117529)

Immunohistochemistry (Formalin/PFA-fixed paraffin-embedded sections) analysis of mouse lung tissue sections labeling Endothelin B Receptor with ab117529.



Immunohistochemistry (Frozen sections) - Anti-Endothelin B Receptor antibody (ab117529)

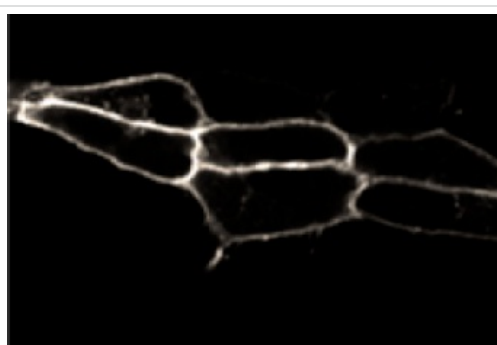
Immunohistochemistry (Frozen sections) analysis of mouse skin tissue sections labeling Endothelin B Receptor with ab117529 at 1/800 dilution. Tissues were fixed for 10 minutes, blocked in 3% fish gelatin for 10-20 minutes, and probed with an Isotype Control Antibody (left panel) (1/800 dilution), and Anti-Endothelin B Receptor antibody (ab117529) (right panel) overnight at 4°C. Detection was performed using a PE-conjugated anti-rabbit IgG secondary antibody at a dilution of 1/800 (red). Nuclei were stained with DAPI and tissues were visualized by fluorescence microscopy.



Immunohistochemistry (Formalin/PFA-fixed paraffin-embedded sections) - Anti-Endothelin B Receptor antibody (ab117529)

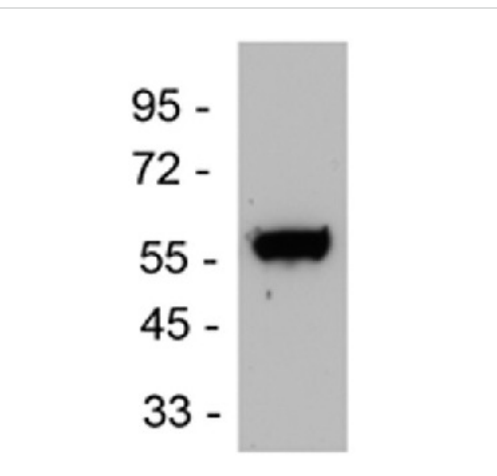
This image is courtesy of an anonymous abreview.

Immunohistochemistry (Formalin/PFA-fixed paraffin-embedded sections) analysis of mouse lung tissue sections labeling Endothelin B Receptor with ab117529 at 1/1500 dilution. Tissue was fixed with formaldehyde; heat mediated antigen retrieval was performed using a citrate buffer pH 6.0. The tissue was blocked with 3% serum for 30 minutes at 20°C. The tissue was incubated with Anti-Endothelin B Receptor antibody (ab117529) for 12 hours in PBS at 20°C. A biotin conjugated goat anti-rabbit secondary antibody at 1/200 dilution.



Immunocytochemistry/ Immunofluorescence - Anti-Endothelin B Receptor antibody (ab117529)

ab117529, at 1/5000 dilution, staining Endothelin B Receptor in HEK293 cells by Immunocytochemistry.



Western blot - Anti-Endothelin B Receptor antibody (ab117529)

Anti-Endothelin B Receptor antibody (ab117529) at 1/5000 dilution + Mouse brain lysate

**Predicted band size : 50 kDa**

## **Our Abpromise to you: Quality guaranteed and expert technical support**

---

- Replacement or refund for products not performing as stated on the datasheet
- Valid for 12 months from date of delivery
- Response to your inquiry within 24 hours
  
- We provide support in Chinese, English, French, German, Japanese and Spanish
- Extensive multi-media technical resources to help you
- We investigate all quality concerns to ensure our products perform to the highest standards

If the product does not perform as described on this datasheet, we will offer a refund or replacement. For full details of the Abpromise, please visit <http://www.abcam.cn/abpromise> or contact our technical team.

## **Terms and conditions**

---

- Guarantee only valid for products bought direct from Abcam or one of our authorized distributors