

Product datasheet

Anti-EPCR/CD201 antibody ab56689

4 图像

概述

产品名称	Anti-EPCR/CD201抗体
描述	小鼠单克隆抗体to EPCR/CD201
宿主	Mouse
经测试应用	适用于: IHC-P, Flow Cyt, WB, ICC/IF
种属反应性	与反应: Human
免疫原	Recombinant full length protein, corresponding to amino acids 1-239 of Human EPCR/CD201
常规说明	Abcam is committed to meeting high standards of ethical manufacturing and has decided to discontinue this product by June 2019 as it has been generated by the ascites method. We are sorry for any inconvenience this may cause. We would recommend antibody ab81712 as a replacement.

性能

形式	Liquid
存放说明	Shipped at 4°C. Upon delivery aliquot and store at -20°C or -80°C. Avoid repeated freeze / thaw cycles.
存储溶液	Preservative: None PBS, pH 7.2
纯度	Protein G purified
克隆	单克隆
同种型	IgG1
轻链类型	kappa

应用

Our [Abpromise guarantee](#) covers the use of **ab56689** in the following tested applications.

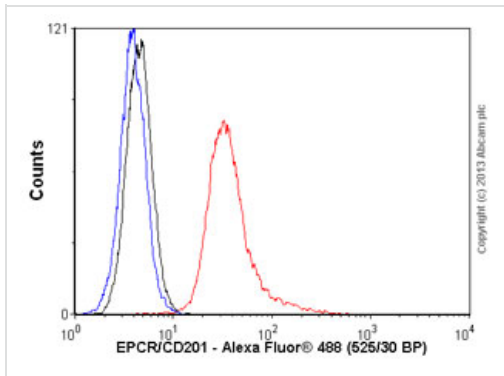
The application notes include recommended starting dilutions; optimal dilutions/concentrations should be determined by the end user.

应用	Ab 评论	说明
IHC-P		Use a concentration of 3 µg/ml.
Flow Cyt		Use 0.01µg for 10 ⁶ cells. ab170190 - Mouse monoclonal IgG1, is suitable for use as an isotype control with this antibody.
WB		Use a concentration of 1 - 5 µg/ml. This antibody has only been tested in WB against the recombinant fragment used as immunogen. We have no data on the detection of endogenous protein.
ICC/IF		Use a concentration of 10 µg/ml.

靶标

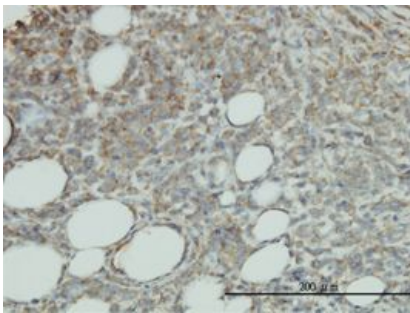
功能	Binds activated protein C. Enhances protein C activation by the thrombin-thrombomodulin complex; plays a role in the protein C pathway controlling blood coagulation.
组织特异性	Expressed strongly in the endothelial cells of arteries and veins in heart and lung, less intensely in capillaries in the lung and skin, and not at all in the endothelium of small vessels of the liver and kidney.
翻译后修饰	N-glycosylated. A soluble form exists; probably released by a metalloprotease. Seems to have the same activity as the membrane-bound form.
细胞定位	Membrane.

图片



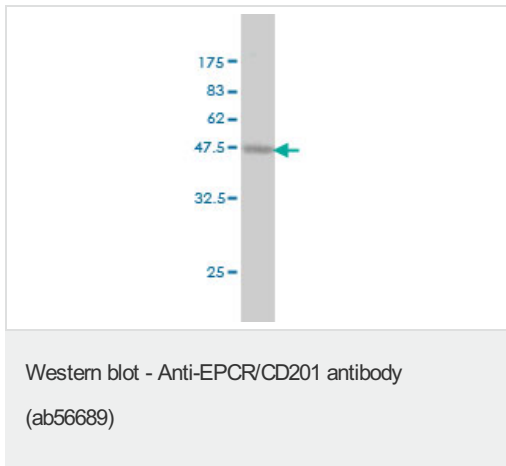
Flow Cytometry - Anti-EPCR/CD201 antibody (ab56689)

Overlay histogram showing A549 cells stained with ab56689 (red line). The cells were fixed with 80% methanol (5 min) and incubated in 1x PBS / 10% normal goat serum / 0.3M glycine to block non-specific protein-protein interactions. The cells were then incubated with the antibody (ab56689, 0.01µg/1x10⁶ cells) for 30 min at 22°C. The secondary antibody used was Alexa Fluor® 488 goat anti-mouse IgG (H&L) (ab150113) at 1/2000 dilution for 30 min at 22°C. Isotype control antibody (black line) was mouse IgG1 [ICIGG1] (ab91353, 1µg/1x10⁶ cells) used under the same conditions. Unlabelled sample (blue line) was also used as a control. Acquisition of >5,000 events were collected using a 20mW Argon ion laser (488nm) and 525/30 bandpass filter. Please note that Abcam do not have any data for use of this antibody on non-fixed cells. We welcome any customer feedback.

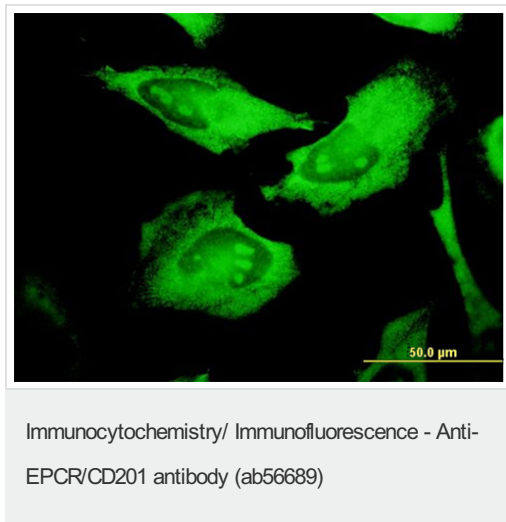


Immunohistochemistry (Formalin/PFA-fixed paraffin-embedded sections) - Anti-EPCR/CD201 antibody (ab56689)

EPCR/CD201 antibody (ab56689) used in immunohistochemistry at 3µg/ml on formalin fixed and paraffin embedded human malignant lymphoma, diffuse large B tissue.



Western blot against tagged recombinant protein immunogen using ab56689 EPCR/CD201 antibody at 1ug/ml. Predicted band size of immunogen is 52 kDa



Immunofluorescence analysis of HeLa cells, staining EPCR/CD201 with ab56689 at 10 µg/ml.

Please note: All products are "FOR RESEARCH USE ONLY AND ARE NOT INTENDED FOR DIAGNOSTIC OR THERAPEUTIC USE"

Our Abpromise to you: Quality guaranteed and expert technical support

- Replacement or refund for products not performing as stated on the datasheet
- Valid for 12 months from date of delivery
- Response to your inquiry within 24 hours
- We provide support in Chinese, English, French, German, Japanese and Spanish
- Extensive multi-media technical resources to help you
- We investigate all quality concerns to ensure our products perform to the highest standards

If the product does not perform as described on this datasheet, we will offer a refund or replacement. For full details of the Abpromise, please visit <http://www.abcam.cn/abpromise> or contact our technical team.

Terms and conditions

- Guarantee only valid for products bought direct from Abcam or one of our authorized distributors