

Product datasheet

Anti-ENTPD5 antibody [EPR3783] ab92542

重组 RabMAb

1 References 1 图像

概述

产品名称	Anti-ENTPD5抗体[EPR3783]
描述	兔单克隆抗体[EPR3783] to ENTPD5
宿主	Rabbit
经测试应用	适用于: WB 不适用于: Flow Cyt, ICC, IHC-P or IP
种属反应性	与反应: Mouse, Rat, Human
免疫原	Synthetic peptide within Human ENTPD5 aa 100-200. The exact sequence is proprietary.
阳性对照	Human fetal liver, Hela and LNCaP lysates.
常规说明	

Our RabMAb[®] technology is a patented hybridoma-based technology for making rabbit monoclonal antibodies. For details on our patents, please refer to [RabMAb[®] patents](#)

This product is a recombinant rabbit monoclonal antibody.

性能

形式	Liquid
存放说明	Shipped at 4°C. Upon delivery aliquot and store at -20°C. Avoid repeated freeze / thaw cycles.
存储溶液	PBS 49%, Sodium azide 0.01%, Glycerol 50%, BSA 0.05%
纯度	Tissue culture supernatant
克隆	单克隆
克隆编号	EPR3783
同种型	IgG

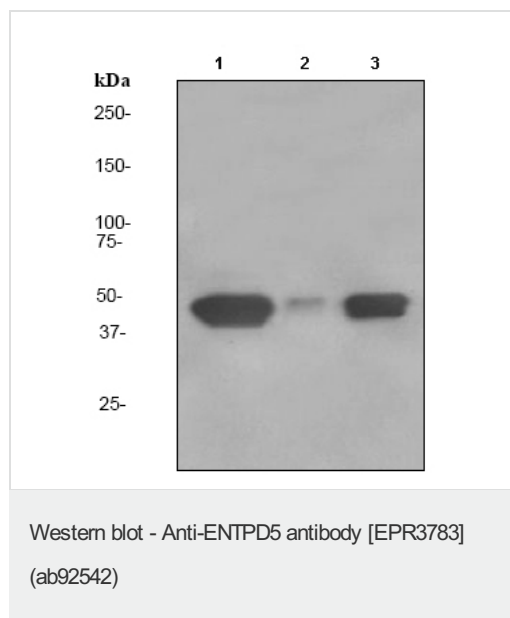
应用

Our [Abpromise guarantee](#) covers the use of **ab92542** in the following tested applications.

The application notes include recommended starting dilutions; optimal dilutions/concentrations should be determined by the end user.

应用	Ab评论	说明
WB		1/1000 - 1/5000. Predicted molecular weight: 47 kDa.
应用说明		Is unsuitable for Flow Cyt, ICC, IHC-P or IP.
靶标		
功能		Uridine diphosphatase (UDPase) that promotes protein N-glycosylation and ATP level regulation. UDP hydrolysis promotes protein N-glycosylation and folding in the endoplasmic reticulum, as well as elevated ATP consumption in the cytosol via an ATP hydrolysis cycle. Together with CMPK1 and AK1, constitutes an ATP hydrolysis cycle that converts ATP to AMP and results in a compensatory increase in aerobic glycolysis. Also hydrolyzes GDP and IDP but not any other nucleoside di-, mono- or triphosphates, nor thiamine pyrophosphate. Plays a key role in the AKT1-PTEN signaling pathway by promoting glycolysis in proliferating cells in response to phosphoinositide 3-kinase (PI3K) signaling.
组织特异性		Expressed in adult liver, kidney, prostate, testis and colon. Much weaker expression in other tissues.
通路		Protein modification; protein glycosylation.
序列相似性		Belongs to the GDA1/CD39 NTPase family.
翻译后修饰		N-glycosylated; high-mannose type.
细胞定位		Endoplasmic reticulum lumen.

图片



All lanes : Anti-ENTPD5 antibody [EPR3783] (ab92542) at 1/1000 dilution

Lane 1 : Human fetal liver lysate

Lane 2 : HeLa cell lysate

Lane 3 : LNCaP cell lysate

Lysates/proteins at 10 µg per lane.

Secondary

All lanes : HRP conjugated Goat anti-Rabbit IgG at 1/2000 dilution

Predicted band size: 47 kDa

Please note: All products are "FOR RESEARCH USE ONLY AND ARE NOT INTENDED FOR DIAGNOSTIC OR THERAPEUTIC USE"

Our Abpromise to you: Quality guaranteed and expert technical support

- Replacement or refund for products not performing as stated on the datasheet
- Valid for 12 months from date of delivery
- Response to your inquiry within 24 hours

- We provide support in Chinese, English, French, German, Japanese and Spanish
- Extensive multi-media technical resources to help you
- We investigate all quality concerns to ensure our products perform to the highest standards

If the product does not perform as described on this datasheet, we will offer a refund or replacement. For full details of the Abpromise, please visit <http://www.abcam.cn/abpromise> or contact our technical team.

Terms and conditions

- Guarantee only valid for products bought direct from Abcam or one of our authorized distributors