

Product datasheet

Anti-ENSA antibody ab125873

2 图像

概述

产品名称	Anti-ENSA抗体
描述	兔多克隆抗体to ENSA
宿主	Rabbit
经测试应用	适用于: WB, ICC
种属反应性	与反应: Human
免疫原	Recombinant fragment, corresponding to a region within amino acids 1-102 of Human ENSA (NP_004427).
阳性对照	A549 whole cell lysate HeLa whole cell lysate HCT116 whole cell lysate HeLa cells (methanol fixed)

性能

形式	Liquid
存放说明	Shipped at 4°C. Upon delivery aliquot and store at -20°C or -80°C. Avoid repeated freeze / thaw cycles.
存储溶液	pH: 7.00 Preservative: 0.01% Thimerosal (merthiolate) Constituents: 78% PBS, 20% Glycerol, 1% BSA
纯度	Immunogen affinity purified
克隆	多克隆
同种型	IgG

应用

Our [Abpromise guarantee](#) covers the use of **ab125873** in the following tested applications.

The application notes include recommended starting dilutions; optimal dilutions/concentrations should be determined by the end user.

应用	Ab评论	说明
WB		1/500 - 1/3000. Predicted molecular weight: 13 kDa.

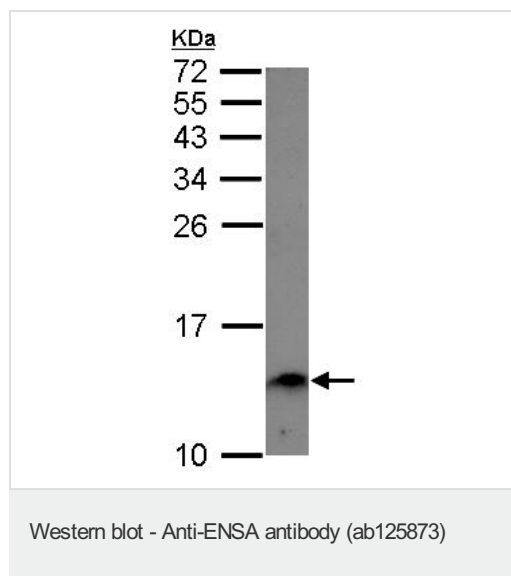
应用	Ab评论	说明
ICC		1/100 - 1/500.

## 靶标

**相关性** ENSA (Alpha endosulfine) is expressed in a wide range of tissues including muscle, brain, and endocrine tissues. The recombinant protein inhibits binding of labeled glibenclamide to beta cell membranes. It also inhibits cloned K(ATP) channel currents and thereby stimulates insulin secretion. It was proposed that endosulfine is an endogenous regulator of the K(ATP) channel, which has a key role in the control of insulin release and, more generally, couples cell metabolism to electrical activity.

**细胞定位** Cytoplasmic

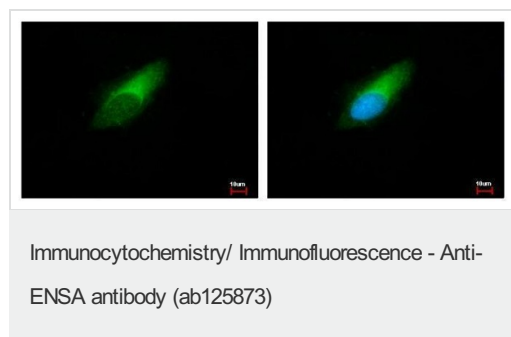
## 图片



Anti-ENSA antibody (ab125873) at 1/1000 dilution + A549 whole cell lysate at 30 µg

**Predicted band size:** 13 kDa

15% SDS PAGE



Methanol-fixed HeLa (human epithelial cell line from cervix adenocarcinoma) cells stained for ENSA (green) using ab125873 at 1/500 dilution in ICC/IF. Blue: Hoechst 33343 staining.

**Please note:** All products are "FOR RESEARCH USE ONLY AND ARE NOT INTENDED FOR DIAGNOSTIC OR THERAPEUTIC USE"

**Our Abpromise to you: Quality guaranteed and expert technical support**

- Replacement or refund for products not performing as stated on the datasheet
- Valid for 12 months from date of delivery
- Response to your inquiry within 24 hours
  
- We provide support in Chinese, English, French, German, Japanese and Spanish
- Extensive multi-media technical resources to help you
- We investigate all quality concerns to ensure our products perform to the highest standards

If the product does not perform as described on this datasheet, we will offer a refund or replacement. For full details of the Abpromise, please visit <http://www.abcam.cn/abpromise> or contact our technical team.

### **Terms and conditions**

---

- Guarantee only valid for products bought direct from Abcam or one of our authorized distributors