


Product datasheet

Anti-EKLF / KLF1 antibody - ChIP Grade ab2483

★★★★★ 1 Abreviews 9 References 1 图像

概述

产品名称	Anti-EKLF / KLF1抗体- ChIP Grade
描述	山羊多克隆抗体to EKLF / KLF1 - ChIP Grade
宿主	Goat
经测试应用	适用于: ChIP, WB
种属反应性	与反应: Mouse, Human 预测可用于: Cow, Dog, Pig 
免疫原	Synthetic peptide: ATAETALPSISTLT , corresponding to N terminal amino acids 2-15 of Human KLF1. Run BLAST with Run BLAST with

性能

形式	Liquid
存放说明	Shipped at 4°C. Store at +4°C short term (1-2 weeks). Upon delivery aliquot. Store at -20°C. Avoid freeze / thaw cycle.
存储溶液	Preservative: 0.02% Sodium Azide Constituents: 0.5% BSA, Tris buffered saline. pH 7.3
纯度	Immunogen affinity purified
纯化说明	Purified from goat serum by ammonium sulphate precipitation followed by antigen affinity chromatography using the immunizing peptide.
克隆	多克隆
同种型	IgG

应用

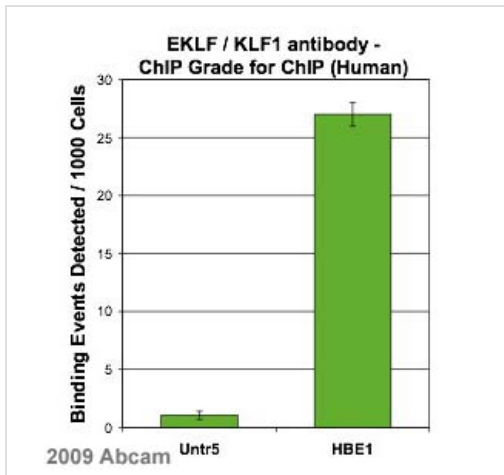
Our [Abpromise guarantee](#) covers the use of **ab2483** in the following tested applications.
The application notes include recommended starting dilutions; optimal dilutions/concentrations should be determined by the end user.

应用	Ab评论	说明
ChIP	★★★★★	Use at an assay dependent dilution. PubMed: 19074263
WB		Use at an assay dependent dilution. Preliminary experiments gave an approx 52kDa band in K562 cell lysate after 1ug/ml antibody staining. Please note that currently we cannot find an explanation in the literature for the band we observe given the predicted size of 38kDa according to NP_006554. The 52kDa band was successfully blocked by incubation with the immunizing peptide

靶标

功能	Transcription regulator of erythrocyte development that probably serves as a general switch factor during erythropoiesis. Is a dual regulator of fetal-to-adult globin switching. Binds to the CACCC box in the beta-globin gene promoter and acts as a preferential activator of this gene. Furthermore, it binds to the BCL11A promoter and activates expression of BCL11A, which in turn represses the HBG1 and HBG2 genes. This dual activity ensures that, in most adults, fetal hemoglobin levels are low. Able to activate CD44 and AQP1 promoters. When sumoylated, acts as a transcriptional repressor by promoting interaction with CDH2/M12beta and also represses megakaryocytic differentiation.
组织特异性	Expression restricted to adult bone marrow and fetal liver. Not expressed in myeloid nor lymphoid cell lines.
疾病相关	Defects in KLF1 are the cause of congenital dyserythropoietic anemia type 4 (CDA4) [MIM:613673]. It is a blood disorder characterized by ineffective erythropoiesis and hemolysis resulting in anemia. Circulating erythroblasts and erythroblasts in the bone marrow show various morphologic abnormalities. Affected individuals with CDA4 also have increased levels of fetal hemoglobin.
序列相似性	Belongs to the krueppel C2H2-type zinc-finger protein family. Contains 3 C2H2-type zinc fingers.
翻译后修饰	Acetylated; can be acetylated on both Lys-274 and Lys-288. Acetylation on Lys-274 (by CBP) appears to be the major site affecting EKLF transactivation activity. Sumoylated; sumoylation, promoted by PIAS1, leads to repression of megakaryocyte differentiation. Also promotes the interaction with the CDH4 subunit of the NuRD repression complex. Phosphorylated primarily on serine residues in the transactivation domain. Phosphorylation on Thr-23 is critical for the transactivation activity.
细胞定位	Nucleus. Colocalizes with SUMO1 in nuclear speckles.

图片



Detection of EKLF / KLF1 binding at the region upstream of the transcription start site of the HBE1 gene by ChIP with ab2483. Chromatin from CD43+ cells was cross-linked prior to ChIP using ab2483 at a concentration of 0.2 µg/µg chromatin. DNA was quantified using RT-PCR. Please see abreview by Genpathway Inc for additional details.

ChIP - Anti-EKLF / KLF1 antibody - ChIP Grade (ab2483)

This image is courtesy of an Abreview submitted by Genpathway Inc

Please note: All products are "FOR RESEARCH USE ONLY AND ARE NOT INTENDED FOR DIAGNOSTIC OR THERAPEUTIC USE"

Our Abpromise to you: Quality guaranteed and expert technical support

- Replacement or refund for products not performing as stated on the datasheet
- Valid for 12 months from date of delivery
- Response to your inquiry within 24 hours
- We provide support in Chinese, English, French, German, Japanese and Spanish
- Extensive multi-media technical resources to help you
- We investigate all quality concerns to ensure our products perform to the highest standards

If the product does not perform as described on this datasheet, we will offer a refund or replacement. For full details of the Abpromise, please visit <http://www.abcam.cn/abpromise> or contact our technical team.

Terms and conditions

- Guarantee only valid for products bought direct from Abcam or one of our authorized distributors