

Product datasheet

Anti-EHD2 antibody ab23935

★★★★☆ 1 Abreviews 11 References 3 图像

概述

产品名称	Anti-EHD2抗体
描述	山羊多克隆抗体to EHD2
宿主	Goat
特异性	This antibody is expected to recognise EHD1 protein as well as EHD2.
经测试应用	适用于: ICC/IF, ELISA, WB
种属反应性	与反应: Mouse, Human 预测可用于: Rat, Cow, Dog
免疫原	Synthetic peptide: C-RLVPPSKRRRHKGSA , corresponding to C terminal amino acids 529 - 542 of Human EHD2. Run BLAST with Run BLAST with
阳性对照	Human heart lysate. Lysate prepared from transfected HEK293 transiently expressing EHD2. IF/ICC: A549 cell line.

性能

形式	Liquid
存放说明	Shipped at 4°C. Upon delivery aliquot and store at -20°C or -80°C. Avoid repeated freeze / thaw cycles.
存储溶液	Preservative: 0.02% Sodium Azide Constituents: 0.5% BSA, Tris buffered saline. pH 7.3
纯度	Immunogen affinity purified
纯化说明	Purified by ammonium sulphate precipitation followed by antigen affinity chromatography using the immunizing peptide.
克隆	多克隆
同种型	IgG

应用

Our [Abpromise guarantee](#) covers the use of **ab23935** in the following tested applications.

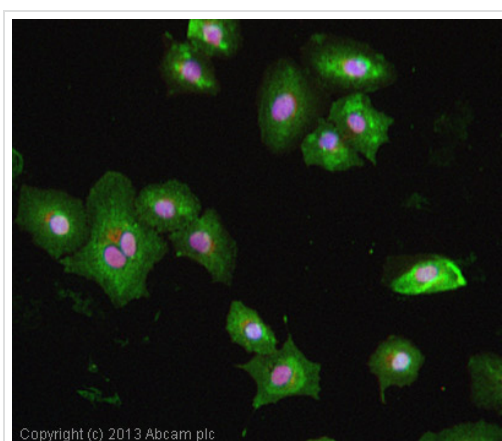
The application notes include recommended starting dilutions; optimal dilutions/concentrations should be determined by the end user.

应用	Ab评论	说明
ICC/IF		Use at an assay dependent dilution. PubMed: 20008164
ELISA		1/64000. Peptide ELISA
WB		Use a concentration of 0.003 - 0.01 µg/ml. Detects a band of approximately 60 kDa (predicted molecular weight: 61 kDa).

靶标

功能	Plays a role in membrane reorganization in response to nucleotide hydrolysis. Binds to liposomes and deforms them into tubules. Plays a role in membrane trafficking between the plasma membrane and endosomes. Important for the internalization of GLUT4. Required for normal fusion of myoblasts to skeletal muscle myotubes. Binds ATP; does not bind GTP.
组织特异性	Highly expressed in heart and moderately expressed in placenta, lung, and skeletal muscle.
序列相似性	Contains 1 EF-hand domain. Contains 1 EH domain.
结构域	The EH domain interacts with Asn-Pro-Phe (NPF) motifs of target proteins.
细胞定位	Cell membrane. Endosome membrane. Colocalizes with GLUT4 in intracellular tubulovesicular structures that are associated with cortical F-actin.

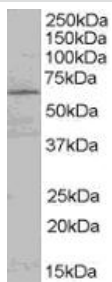
图片



Copyright (c) 2013 Abcam plc

Immunocytochemistry/ Immunofluorescence - Anti-EHD2 antibody (ab23935)

ICC/IF image of ab23935 stained A549 cells. The cells were 4% formaldehyde fixed (10 min) and then incubated in 1%BSA / 0.3M glycine in 0.1% PBS-Tween for 1h to permeabilise the cells and block non-specific protein-protein interactions. The cells were then incubated with the antibody (ab23935, 5µg/ml) overnight at +4°C. The secondary antibody (green) was [ab96931](#), DyLight® 488 donkey anti-goat IgG (H+L) used at a 1/250 dilution for 1h. Alexa Fluor® 594 WGA was used to label plasma membranes (red) at a 1/200 dilution for 1h. DAPI was used to stain the cell nuclei (blue) at a concentration of 1.43µM



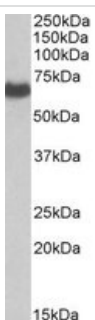
Western blot - EHD2 antibody (ab23935)

Anti-EHD2 antibody (ab23935) at 0.003 µg/ml
+ Human Heart lysate (RIPA buffer, 35µg total
protein per lane).

Predicted band size: 61 kDa

Observed band size: 61 kDa

Primary incubated for 1 hour. Detected by
western blot using chemiluminescence.



Western blot - Anti-EHD2 antibody (ab23935)

Anti-EHD2 antibody (ab23935) at 0.1 µg/ml +
Human Placenta lysate in RIPA buffer at 35 µg

Predicted band size: 61 kDa

Please note: All products are "FOR RESEARCH USE ONLY AND ARE NOT INTENDED FOR DIAGNOSTIC OR THERAPEUTIC USE"

Our Abpromise to you: Quality guaranteed and expert technical support

- Replacement or refund for products not performing as stated on the datasheet
- Valid for 12 months from date of delivery
- Response to your inquiry within 24 hours
- We provide support in Chinese, English, French, German, Japanese and Spanish
- Extensive multi-media technical resources to help you
- We investigate all quality concerns to ensure our products perform to the highest standards

If the product does not perform as described on this datasheet, we will offer a refund or replacement. For full details of the Abpromise, please visit <http://www.abcam.cn/abpromise> or contact our technical team.

Terms and conditions

- Guarantee only valid for products bought direct from Abcam or one of our authorized distributors