


Product datasheet

Anti-EGFR antibody [E234] ab32198

**重组** RabMAb

1 Abreviews 4 图像

概述

<b>产品名称</b>	Anti-EGFR抗体[E234]
<b>描述</b>	兔单克隆抗体[E234] to EGFR
<b>宿主</b>	Rabbit
<b>特异性</b>	ab32198 detects Epidermal growth factor receptor (EGFR). It does not cross react with other ERBB family members. This product yielded a strong signal in western blot using A431 (human squamous carcinoma) lysate which naturally overexpresses the EGFR protein. Western blot conditions may need to be optimised for cell lines and tissues that express lower levels of endogenous EGFR.
<b>经测试应用</b>	<b>适用于:</b> WB, Flow Cyt, ICC, IHC-P <b>不适用于:</b> IP
<b>种属反应性</b>	<b>与反应:</b> Human <b>预测可用于:</b> Cow, Pig 
<b>免疫原</b>	Synthetic peptide (the amino acid sequence is considered to be commercially sensitive) (N terminal)
<b>阳性对照</b>	A431 cell lysate IHC-P: FFPE human skin tissue sections.
<b>常规说明</b>	This product is a recombinant rabbit monoclonal antibody.  Mouse, Rat: We have preliminary internal testing data to indicate this antibody may not react with these species. Please contact us for more information.  Our RabMAb <sup>®</sup> technology is a patented hybridoma-based technology for making rabbit monoclonal antibodies. For details on our patents, please refer to <a href="#">RabMAb<sup>®</sup> patents</a>

性能

<b>形式</b>	Liquid
<b>存放说明</b>	Shipped at 4°C. Upon delivery aliquot and store at -20°C. Avoid freeze / thaw cycles.
<b>存储溶液</b>	PBS 49%,Sodium azide 0.01%,Glycerol 50%,BSA 0.05%
<b>纯度</b>	IgG fraction
<b>克隆</b>	单克隆
<b>克隆编号</b>	E234

## 应用

Our [Abpromise guarantee](#) covers the use of **ab32198** in the following tested applications.

The application notes include recommended starting dilutions; optimal dilutions/concentrations should be determined by the end user.

应用	Ab 评论	说明
WB		1/500. Detects a band of approximately 134 kDa (predicted molecular weight: 180 kDa). This product yielded a strong signal in western blot using A431 (human squamous carcinoma) lysate which naturally overexpresses the EGFR protein. Western blot conditions may need to be optimised for cell lines and tissues that express lower levels of endogenous EGFR.
Flow Cyt		1/50. <a href="#">ab172730</a> - Rabbit monoclonal IgG, is suitable for use as an isotype control with this antibody.
ICC		1/100.
IHC-P		1/100. Perform heat mediated antigen retrieval with citrate buffer pH 6 before commencing with IHC staining protocol.

## 应用说明

Is unsuitable for IP.

## 靶标

## 功能

Receptor tyrosine kinase binding ligands of the EGF family and activating several signaling cascades to convert extracellular cues into appropriate cellular responses. Known ligands include EGF, TGFA/TGF-alpha, amphiregulin, epigen/EPGN, BTC/betacellulin, epiregulin/EREG and HBEGF/heparin-binding EGF. Ligand binding triggers receptor homo- and/or heterodimerization and autophosphorylation on key cytoplasmic residues. The phosphorylated receptor recruits adapter proteins like GRB2 which in turn activates complex downstream signaling cascades. Activates at least 4 major downstream signaling cascades including the RAS-RAF-MEK-ERK, PI3 kinase-AKT, PLCgamma-PKC and STATs modules. May also activate the NF-kappa-B signaling cascade. Also directly phosphorylates other proteins like RGS16, activating its GTPase activity and probably coupling the EGF receptor signaling to the G protein-coupled receptor signaling. Also phosphorylates MUC1 and increases its interaction with SRC and CTNNB1/beta-catenin.  
Isoform 2 may act as an antagonist of EGF action.

## 组织特异性

Ubiquitously expressed. Isoform 2 is also expressed in ovarian cancers.

## 疾病相关

Lung cancer  
Inflammatory skin and bowel disease, neonatal, 2

## 序列相似性

Belongs to the protein kinase superfamily. Tyr protein kinase family. EGF receptor subfamily.  
Contains 1 protein kinase domain.

## 翻译后修饰

Phosphorylation at Ser-695 is partial and occurs only if Thr-693 is phosphorylated.  
Phosphorylation at Thr-678 and Thr-693 by PRKD1 inhibits EGF-induced MAPK8/JNK1

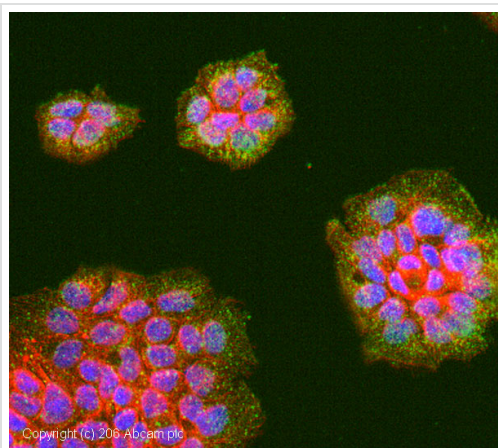
activation. Dephosphorylation by PTPRJ prevents endocytosis and stabilizes the receptor at the plasma membrane. Autophosphorylation at Tyr-1197 is stimulated by methylation at Arg-1199 and enhances interaction with PTPN6. Autophosphorylation at Tyr-1092 and/or Tyr-1110 recruits STAT3. Dephosphorylated by PTPN1 and PTPN2.

Monoubiquitinated and polyubiquitinated upon EGF stimulation; which does not affect tyrosine kinase activity or signaling capacity but may play a role in lysosomal targeting. Polyubiquitin linkage is mainly through 'Lys-63', but linkage through 'Lys-48', 'Lys-11' and 'Lys-29' also occurs. Deubiquitination by OTUD7B prevents degradation. Ubiquitinated by RNF115 and RNF126. Methylated. Methylation at Arg-1199 by PRMT5 stimulates phosphorylation at Tyr-1197.

## 细胞定位

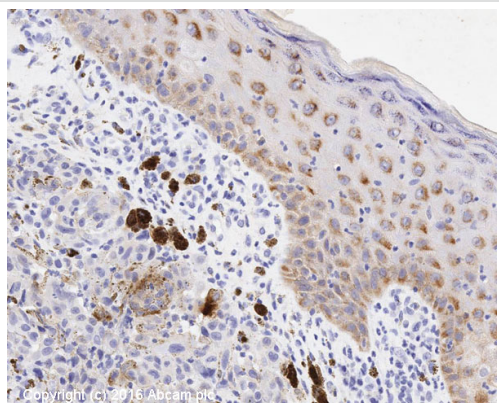
Secreted and Cell membrane. Endoplasmic reticulum membrane. Golgi apparatus membrane. Nucleus membrane. Endosome. Endosome membrane. Nucleus. In response to EGF, translocated from the cell membrane to the nucleus via Golgi and ER. Endocytosed upon activation by ligand. Colocalized with GPER1 in the nucleus of estrogen agonist-induced cancer-associated fibroblasts (CAF).

## 图片



Immunocytochemistry/ Immunofluorescence - Anti-EGFR antibody [E234] (ab32198)

ab32198 stained A431 cells. The cells were 100% methanol fixed for 10 minutes at -20°C and then incubated in 1%BSA / 10% normal goat serum / 0.3M glycine in 0.1% PBS-Tween for 1 hour at room temperature to permeabilise the cells and block non-specific protein-protein interactions. The cells were then incubated with the antibody (ab32198 at 1in100 dilution) overnight at +4°C. The secondary antibody (pseudo-colored green) was [Goat Anti-Rabbit IgG H&L \(Alexa Fluor® 488\) preadsorbed \(ab150081\)](#) used at a 1/1000 dilution for 1 hour at room temperature. Alexa Fluor® 594 WGA was used to label plasma membranes (pseudo-colored red) at a 1/200 dilution for 1 hour at room temperature. DAPI was used to stain the cell nuclei (pseudo-colored blue) at a concentration of 1.43µM for 1 hour at room temperature.

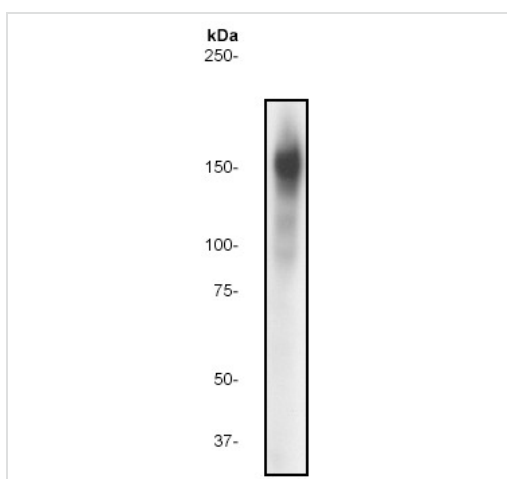


Immunohistochemistry (Formalin/PFA-fixed paraffin-embedded sections) - Anti-EGFR antibody [E234] (ab32198)

IHC image of EGFR staining in human skin formalin fixed paraffin embedded tissue section\*, performed on a Leica Bond™ system using the standard protocol F. The section was pre-treated using heat mediated antigen retrieval with sodium citrate buffer (pH6, epitope retrieval solution 1) for 20 mins. The section was then incubated with ab32198, 1in100, for 15 mins at room temperature and detected using an HRP conjugated compact polymer system. DAB was used as the chromogen. The section was then counterstained with haematoxylin and mounted with DPX.

For other IHC staining systems (automated and non-automated) customers should optimize variable parameters such as antigen retrieval conditions, primary antibody concentration and antibody incubation times.

*\*Tissue obtained from the Human Research Tissue Bank, supported by the NIHR Cambridge Biomedical Research Centre*

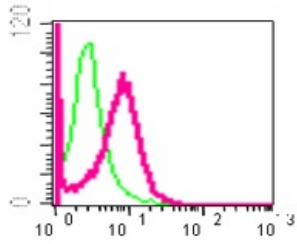


Western blot - EGFR antibody [E234] (ab32198)

Anti-EGFR antibody [E234] (ab32198) at 1/500 dilution + A431 cell lysate

**Predicted band size:** 180 kDa

**Observed band size:** 150 kDa



Flow Cytometry - Anti-EGFR antibody [E234]  
(ab32198)

Flow cytometric analysis of A431 cells using anti-EGFR RabMAb (red) (ab32198) or a rabbit IgG (negative) (green).

**Please note:** All products are "FOR RESEARCH USE ONLY AND ARE NOT INTENDED FOR DIAGNOSTIC OR THERAPEUTIC USE"

### Our Abpromise to you: Quality guaranteed and expert technical support

- Replacement or refund for products not performing as stated on the datasheet
- Valid for 12 months from date of delivery
- Response to your inquiry within 24 hours
- We provide support in Chinese, English, French, German, Japanese and Spanish
- Extensive multi-media technical resources to help you
- We investigate all quality concerns to ensure our products perform to the highest standards

If the product does not perform as described on this datasheet, we will offer a refund or replacement. For full details of the Abpromise, please visit <http://www.abcam.cn/abpromise> or contact our technical team.

### Terms and conditions

- Guarantee only valid for products bought direct from Abcam or one of our authorized distributors