


Product datasheet

Anti-EEF2 antibody ab33208

3 References 2 图像

概述

产品名称	Anti-EEF2抗体
描述	兔多克隆抗体to EEF2
宿主	Rabbit
经测试应用	适用于: ICC/IF, WB
种属反应性	与反应: Mouse, Rat, Human 预测可用于: Chicken, Hamster, Cow, Xenopus laevis, Zebrafish 
免疫原	Synthetic peptide conjugated to KLH derived from within residues 550 - 650 of Human EEF2. 参阅Abcam的专有抗源政策(Peptide available as ab33521 .)
阳性对照	This antibody gave a positive signal in the following Whole Cell Lysates: HeLa; Jurkat; A431; HEK 293; HepG2; MCF-7; SHSY-5Y; U2OS.

性能

形式	Liquid
存放说明	Shipped at 4°C. Store at +4°C short term (1-2 weeks). Upon delivery aliquot. Store at -20°C or -80°C. Avoid freeze / thaw cycle.
存储溶液	Preservative: 0.02% Sodium Azide Constituents: 1% BSA, PBS, pH 7.4
纯度	Immunogen affinity purified
克隆	多克隆
同种型	IgG

应用

Our [Abpromise guarantee](#) covers the use of **ab33208** in the following tested applications.

The application notes include recommended starting dilutions; optimal dilutions/concentrations should be determined by the end user.

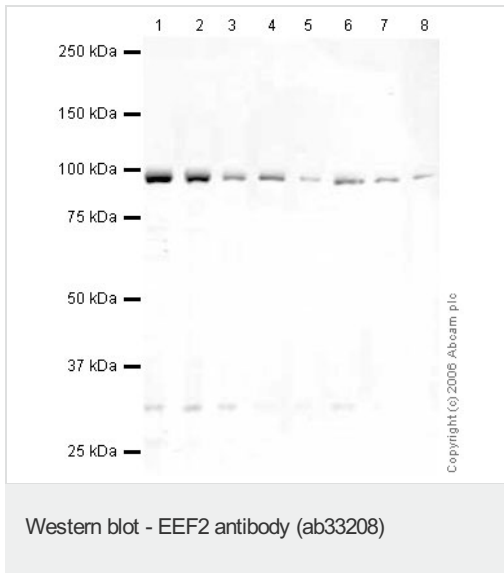
应用	Ab评论	说明
ICC/IF		Use a concentration of 5 µg/ml.

应用	Ab评论	说明
WB		Use a concentration of 1 µg/ml. Detects a band of approximately 95 kDa (predicted molecular weight: 95 kDa).

靶标

功能	Catalyzes the GTP-dependent ribosomal translocation step during translation elongation. During this step, the ribosome changes from the pre-translocational (PRE) to the post-translocational (POST) state as the newly formed A-site-bound peptidyl-tRNA and P-site-bound deacylated tRNA move to the P and E sites, respectively. Catalyzes the coordinated movement of the two tRNA molecules, the mRNA and conformational changes in the ribosome.
序列相似性	Belongs to the GTP-binding elongation factor family. EF-G/EF-2 subfamily.
翻译后修饰	Phosphorylation by EF-2 kinase completely inactivates EF-2. Diphthamide is 2-[3-carboxyamido-3-(trimethyl-ammonio)propyl]histidine. Diphthamide can be ADP-ribosylated by diphtheria toxin and by Pseudomonas exotoxin A, thus arresting protein synthesis. ISGylated.
细胞定位	Cytoplasm.

图片



All lanes : Anti-EEF2 antibody (ab33208) at 1 µg/ml

Lane 1 : HeLa (Human epithelial carcinoma cell line) Whole Cell Lysate

Lane 2 : Jurkat whole cell lysate ([ab7899](#))

Lane 3 : A431 whole cell lysate ([ab7909](#))

Lane 4 : HEK293 whole cell lysate ([ab7902](#))

Lane 5 : HepG2 whole cell lysate ([ab7900](#))

Lane 6 : MCF-7 (Human breast adenocarcinoma cell line) Whole Cell Lysate

Lane 7 : SHSY-5Y (Human Neuroblastoma) Whole Cell Lysate

Lane 8 : U2OS (Human osteosarcoma cell line) Whole Cell Lysate

Lysates/proteins at 10 µg per lane.

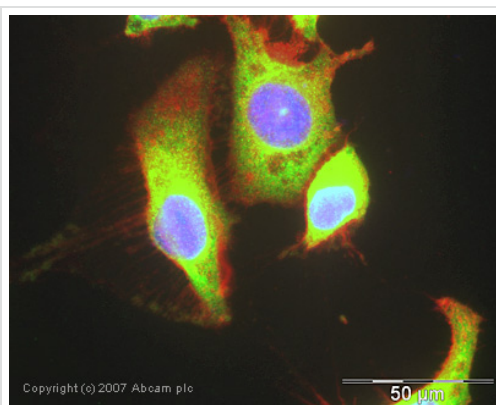
Secondary

All lanes : IRDye 680 Conjugated Goat Anti-Rabbit IgG (H+L) at 1/15000 dilution

Performed under reducing conditions.

Predicted band size: 95 kDa

Observed band size: 95 kDa



Immunocytochemistry/ Immunofluorescence - EEF2 antibody (ab33208)

ICC/IF image of ab33208 stained human HeLa cells. The cells were PFA fixed (10 min), permeabilised in TBS-T (20 min) and incubated with the antibody (ab33208, 5µg/ml) for 1h at room temperature. 1%BSA / 10% normal serum / 0.3M glycine was used to quench autofluorescence and block non-specific protein-protein interactions. The secondary antibody (green) was Alexa Fluor® 488 goat anti-rabbit IgG (H+L) used at a 1/1000 dilution for 1h. Alexa Fluor® 594 WGA was used to label plasma membranes (red). DAPI was used to stain the cell nuclei (blue).

Our Abpromise to you: Quality guaranteed and expert technical support

- Replacement or refund for products not performing as stated on the datasheet
- Valid for 12 months from date of delivery
- Response to your inquiry within 24 hours

- We provide support in Chinese, English, French, German, Japanese and Spanish
- Extensive multi-media technical resources to help you
- We investigate all quality concerns to ensure our products perform to the highest standards

If the product does not perform as described on this datasheet, we will offer a refund or replacement. For full details of the Abpromise, please visit <http://www.abcam.cn/abpromise> or contact our technical team.

Terms and conditions

- Guarantee only valid for products bought direct from Abcam or one of our authorized distributors