

Product datasheet

Anti-EED antibody ab4469

敲除 验证

★★★★★ 3 Abreviews 18 References 3 图像

概述

产品名称	Anti-EED抗体
描述	兔多克隆抗体to EED
宿主	Rabbit
特异性	ab4469 specifically recognises the four isoforms of EED following the immunoprecipitation of tagged Ezh2 from HEK293 nuclear extract. However, using HEK293 nuclear lysate ab4469 predominantly recognises non-specific bands.
经测试应用	适用于: WB, ICC/IF
种属反应性	与反应: Cow, Human 预测可用于: Mouse, Chicken, Xenopus laevis
免疫原	Synthetic peptide conjugated to KLH derived from within residues 1 - 100 of Human EED. 参阅 Abcam的专有抗源政策 (Peptide available as ab13743 .)
阳性对照	This antibody gave a positive signal in Human Recombinant EED Protein

性能

形式	Liquid
存放说明	Shipped at 4°C. Store at +4°C short term (1-2 weeks). Upon delivery aliquot. Store at -20°C or -80°C. Avoid freeze / thaw cycle.
存储溶液	Preservative: 0.02% Sodium Azide Constituents: 1% BSA, PBS, pH 7.4
纯度	Immunogen affinity purified
克隆	多克隆
同种型	IgG

应用

Our [Abpromise guarantee](#) covers the use of **ab4469** in the following tested applications.

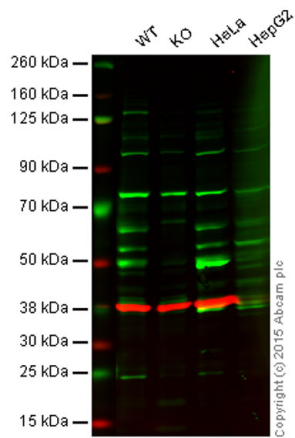
The application notes include recommended starting dilutions; optimal dilutions/concentrations should be determined by the end user.

应用	Ab评论	说明
WB	★★★★★	1/200. Predicted molecular weight: 49 kDa.
ICC/IF		1/100.

靶标

功能	Polycomb group (PcG) protein. Component of the PRC2/EED-EZH2 complex, which methylates 'Lys-9' and 'Lys-27' of histone H3, leading to transcriptional repression of the affected target gene. The PRC2/EED-EZH2 complex may also serve as a recruiting platform for DNA methyltransferases, thereby linking two epigenetic repression systems. Genes repressed by the PRC2/EED-EZH2 complex include HOXC8, HOXA9, MYT1 and CDKN2A.
组织特异性	Expressed in brain, colon, heart, kidney, liver, lung, muscle, ovary, peripheral blood leukocytes, pancreas, placenta, prostate, spleen, small intestine, testis, thymus and uterus. Appears to be overexpressed in breast and colon cancer.
序列相似性	Belongs to the WD repeat ESC family. Contains 7 WD repeats.
发展阶段	Expression peaks at the G1/S phase boundary.
细胞定位	Nucleus. Chromosome. Transiently colocalizes with XIST at inactive X chromosomes.

图片



Western blot - Anti-EED antibody (ab4469)

Lane 1: Wild-type HAP1 cell lysate (20 µg)

Lane 2: EED knockout HAP1 cell lysate (20 µg)

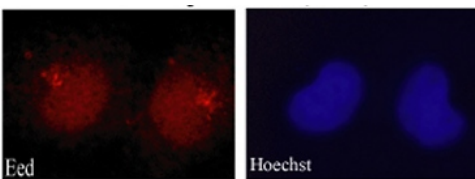
Lane 3: HeLa cell lysate (20 µg)

Lane 4: HepG2 cell lysate (20 µg)

Lanes 1 - 4: Merged signal (red and green).

Green - ab4469 observed at 55 kDa. Red - loading control, [ab8245](#), observed at 37 kDa.

ab4469 was shown to recognize EED in wild-type HAP1 cells along with additional cross-reactive bands. No band was observed when EED knockout samples were examined. Wild-type and EED knockout samples were subjected to SDS-PAGE. ab4469 and [ab8245](#) (loading control to GAPDH) were diluted 1/250 and 1/1000 respectively and incubated overnight at 4°C. Blots were developed with Goat anti-Rabbit IgG H&L (IRDye® 800CW) preadsorbed ([ab216773](#)) and Goat anti-Mouse IgG H&L (IRDye® 680RD) preadsorbed ([ab216776](#)) secondary antibodies at 1/10,000 dilution for 1 hour at room temperature before imaging.



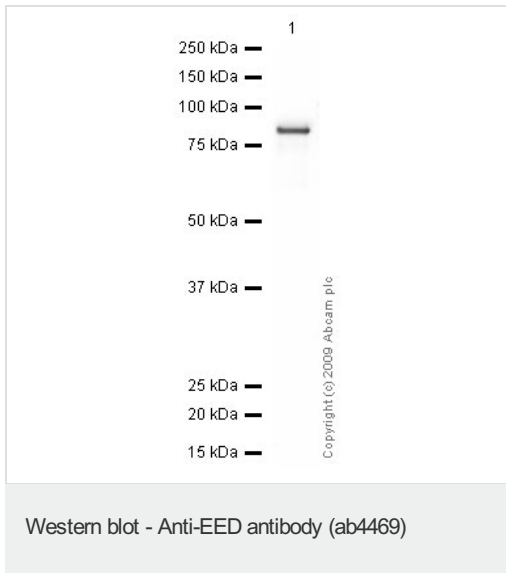
Immunocytochemistry/ Immunofluorescence - Anti-EED antibody (ab4469)

Rabbit polyclonal to EED (ab4469) on U2OS cells. Antibody used at 1/100.

U2OS cells were fixed with PFA (3.7%), permeabilised with PBS 0.1% Triton.

Counterstained with Hoechst. Cells were examined with Axioplan 2 microscope (Zeiss).

Secondary antibody: donkey anti-rabbit (Cy3).



Anti-EED antibody (ab4469) at 1/250 dilution
+ EED Recombinant Protein (Human) at 0.1
 μ g

Secondary

Goat polyclonal to Rabbit IgG - H&L - Pre-Adsorbed (HRP) at 1/3000 dilution

Performed under reducing conditions.

Predicted band size: 49 kDa

Observed band size: 80 kDa

ab4469 recognizes the full-length recombinant EED protein which has an expected molecular weight of 80 kDa (tagged).

Please note: All products are "FOR RESEARCH USE ONLY AND ARE NOT INTENDED FOR DIAGNOSTIC OR THERAPEUTIC USE"

Our Abpromise to you: Quality guaranteed and expert technical support

- Replacement or refund for products not performing as stated on the datasheet
- Valid for 12 months from date of delivery
- Response to your inquiry within 24 hours
- We provide support in Chinese, English, French, German, Japanese and Spanish
- Extensive multi-media technical resources to help you
- We investigate all quality concerns to ensure our products perform to the highest standards

If the product does not perform as described on this datasheet, we will offer a refund or replacement. For full details of the Abpromise, please visit <http://www.abcam.cn/abpromise> or contact our technical team.

Terms and conditions

- Guarantee only valid for products bought direct from Abcam or one of our authorized distributors