

Product datasheet

Anti-Desmoglein 1 antibody ab123414

1 图像

概述

产品名称	Anti-Desmoglein 1抗体
描述	兔多克隆抗体to Desmoglein 1
宿主	Rabbit
经测试应用	适用于: WB
种属反应性	与反应: Human
免疫原	Synthetic peptide conjugated to KLH, corresponding to a region within internal sequence amino acids 470-499 of Human Desmoglein 1 (NP_001933.2, Q02413).
阳性对照	K562 cell line lysate

性能

形式	Liquid
存放说明	Shipped at 4°C. Store at 4°C (up to 6 months). Store at -20°C long term.
存储溶液	Preservative: 0.09% Sodium azide Constituent: 99% PBS
纯度	Immunogen affinity purified
纯化说明	Purified through a Protein A column, followed by peptide affinity purification.
克隆	多克隆
同种型	IgG

应用

Our [Abpromise guarantee](#) covers the use of **ab123414** in the following tested applications.

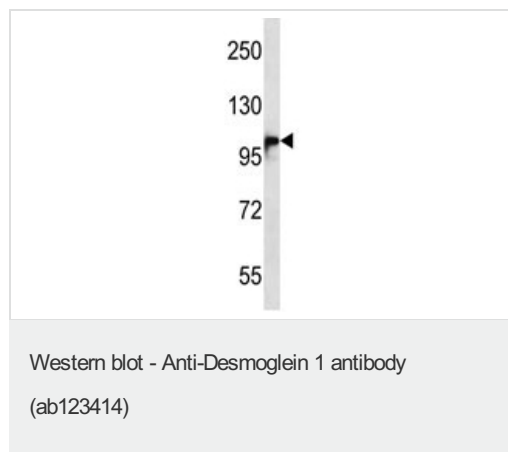
The application notes include recommended starting dilutions; optimal dilutions/concentrations should be determined by the end user.

应用	Ab评论	说明
WB		1/100 - 1/500. Predicted molecular weight: 114 kDa.

靶标

功能	Component of intercellular desmosome junctions. Involved in the interaction of plaque proteins and intermediate filaments mediating cell-cell adhesion.
组织特异性	Epidermis, tongue, tonsil and esophagus.
疾病相关	Defects in DSG1 are the cause of palmoplantar keratoderma striate type 1 (SPPK1) [MIM:148700]; also known as keratosis palmoplantaris striata I. SPPK1 is a dermatological disorder characterized by thickening of the skin on the palms and soles, and longitudinal hyperkeratotic lesions on the palms, running the length of each finger.
序列相似性	Contains 4 cadherin domains.
结构域	Calcium may be bound by the cadherin-like repeats.
细胞定位	Cell membrane. Cell junction > desmosome.

图片



Anti-Desmoglein 1 antibody (ab123414) at 1/100 dilution + K562 cell line lysate at 35 µg

Predicted band size: 114 kDa

Please note: All products are "FOR RESEARCH USE ONLY AND ARE NOT INTENDED FOR DIAGNOSTIC OR THERAPEUTIC USE"

Our Abpromise to you: Quality guaranteed and expert technical support

- Replacement or refund for products not performing as stated on the datasheet
- Valid for 12 months from date of delivery
- Response to your inquiry within 24 hours
- We provide support in Chinese, English, French, German, Japanese and Spanish
- Extensive multi-media technical resources to help you
- We investigate all quality concerns to ensure our products perform to the highest standards

If the product does not perform as described on this datasheet, we will offer a refund or replacement. For full details of the Abpromise, please visit <http://www.abcam.cn/abpromise> or contact our technical team.

Terms and conditions

- Guarantee only valid for products bought direct from Abcam or one of our authorized distributors