

Product datasheet

Anti-DYNLL1 antibody ab92936

★★★★★ 1 Abreviews 2 图像

概述

产品名称	Anti-DYNLL1抗体
描述	兔多克隆抗体to DYNLL1
宿主	Rabbit
经测试应用	适用于: WB, IHC-FoFr, ICC/IF
种属反应性	与反应: Mouse, Rat, Human 预测可用于: Rabbit, Cow, Cynomolgus monkey
免疫原	Synthetic peptide conjugated to KLH derived from within residues 1 to the C-terminus of Human DLC8. 参阅Abcam的专有抗源政策
阳性对照	This antibody gave a positive signal in Mouse brain and hippocampus tissue lysates, Human brain tissue lysate and in the following whole cell lysates: MDA-MB-231; MCF7; PC12; HeLa.

性能

形式	Liquid
存放说明	Shipped at 4°C. Store at +4°C short term (1-2 weeks). Upon delivery aliquot. Store at -20°C or -80°C. Avoid freeze / thaw cycle.
存储溶液	Preservative: 0.02% Sodium Azide Constituents: 1% BSA, PBS, pH 7.4
纯度	Immunogen affinity purified
克隆	多克隆
同种型	IgG

应用

Our [Abpromise guarantee](#) covers the use of **ab92936** in the following tested applications.

The application notes include recommended starting dilutions; optimal dilutions/concentrations should be determined by the end user.

应用	Ab评论	说明
WB		Use a concentration of 1 µg/ml. Detects a band of approximately 10 kDa (predicted molecular weight: 10 kDa).

应用	Ab评论	说明
IHC-FoFr	★★★★★	Use at an assay dependent concentration.
ICC/IF		Use a concentration of 1 µg/ml.

靶标

功能

Acts as one of several non-catalytic accessory components of the cytoplasmic dynein 1 complex that are thought to be involved in linking dynein to cargos and to adapter proteins that regulate dynein function. Cytoplasmic dynein 1 acts as a motor for the intracellular retrograde motility of vesicles and organelles along microtubules. May play a role in changing or maintaining the spatial distribution of cytoskeletal structures.

Binds and inhibits the catalytic activity of neuronal nitric oxide synthase.

Promotes transactivation functions of ESR1 and plays a role in the nuclear localization of ESR1.

Regulates apoptotic activities of BCL2L11 by sequestering it to microtubules. Upon apoptotic stimuli the BCL2L11-DYNLL1 complex dissociates from cytoplasmic dynein and translocates to mitochondria and sequesters BCL2 thus neutralizing its antiapoptotic activity.

组织特异性

Ubiquitous.

序列相似性

Belongs to the dynein light chain family.

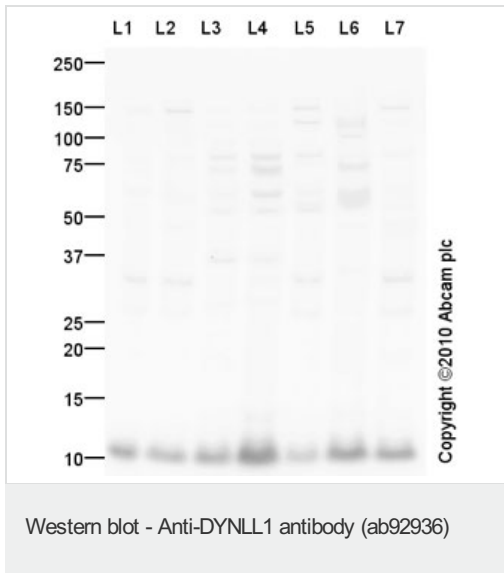
翻译后修饰

Phosphorylation at Ser-88 appears to control the dimer-monomer transition. According to PubMed:15193260, it is phosphorylated at Ser-88 by PAK1, however, according to PubMed:18650427, the DYNLL1 dimer is not accessible for PAK1 and the phosphorylation could not be demonstrated in vitro.

细胞定位

Cytoplasm, cytoskeleton. Nucleus. Mitochondrion. Upon induction of apoptosis translocates together with BCL2L11 to mitochondria.

图片



All lanes : Anti-DYNLL1 antibody (ab92936) at 1 µg/ml

Lane 1 : MDA-MB-231 (Human breast adenocarcinoma cell line) Whole Cell Lysate

Lane 2 : MCF7 (Human breast adenocarcinoma cell line) Whole Cell Lysate

Lane 3 : Brain (Mouse) Tissue Lysate

Lane 4 : Mouse Hippocampus Tissue Lysate

Lane 5 : PC12 (Rat adrenal pheochromocytoma cell line) Whole Cell Lysate

Lane 6 : Human brain tissue lysate - total protein ([ab29466](#))

Lane 7 : HeLa (Human epithelial carcinoma cell line) Whole Cell Lysate

Lysates/proteins at 10 µg per lane.

Secondary

All lanes : Goat Anti-Rabbit IgG H&L (HRP) preadsorbed ([ab97080](#)) at 1/5000 dilution

Developed using the ECL technique.

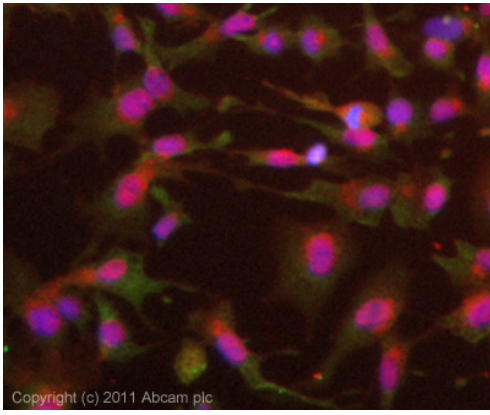
Performed under reducing conditions.

Predicted band size: 10 kDa

Observed band size: 10 kDa

Exposure time: 90 seconds

Secondary antibody goat [anti-rabbit HRP \(ab97080\)](#)



Immunocytochemistry/ Immunofluorescence - DLC8 antibody (ab92936)

ICC/IF image of ab92936 stained HepG2 cells. The cells were 4% PFA fixed (10 min) and then incubated in 1%BSA / 10% normal goat serum / 0.3M glycine in 0.1% PBS-Tween for 1h to permeabilise the cells and block non-specific protein-protein interactions. The cells were then incubated with the antibody (ab92936, 1µg/ml) overnight at +4°C. The secondary antibody (green) was Alexa Fluor® 488 goat anti-rabbit IgG (H+L) used at a 1/1000 dilution for 1h. Alexa Fluor® 594 WGA was used to label plasma membranes (red) at a 1/200 dilution for 1h. DAPI was used to stain the cell nuclei (blue) at a concentration of 1.43µM. This antibody also gave a positive result in 4% PFA fixed (10 min) HeLa, Hek293 and MCF7 cells at 1µg/ml.

Please note: All products are "FOR RESEARCH USE ONLY AND ARE NOT INTENDED FOR DIAGNOSTIC OR THERAPEUTIC USE"

Our Abpromise to you: Quality guaranteed and expert technical support

- Replacement or refund for products not performing as stated on the datasheet
- Valid for 12 months from date of delivery
- Response to your inquiry within 24 hours
- We provide support in Chinese, English, French, German, Japanese and Spanish
- Extensive multi-media technical resources to help you
- We investigate all quality concerns to ensure our products perform to the highest standards

If the product does not perform as described on this datasheet, we will offer a refund or replacement. For full details of the Abpromise, please visit <http://www.abcam.cn/abpromise> or contact our technical team.

Terms and conditions

- Guarantee only valid for products bought direct from Abcam or one of our authorized distributors