


Product datasheet

Anti-DOCK10 antibody ab75258

2 图像

概述

产品名称	Anti-DOCK10抗体
描述	兔多克隆抗体to DOCK10
宿主	Rabbit
经测试应用	适用于: WB, IP
种属反应性	与反应: Human 预测可用于: Horse, Guinea pig, Cow, Dog, Chimpanzee, Rhesus monkey, Gorilla, Elephant 
免疫原	Synthetic peptide corresponding to a region between residue 100 and 150 of human DOCK10 (NP_055504.2)
阳性对照	HeLa whole cell lysate.

性能

形式	Liquid
存放说明	Shipped at 4°C. Upon delivery aliquot and store at -20°C. Avoid freeze / thaw cycles.
存储溶液	Preservative: 0.09% Sodium Azide Constituents: 8mM PBS, 60mM Citrate, 150mM Tris, pH 7-8
纯度	Immunogen affinity purified
克隆	多克隆
同种型	IgG

应用

Our [Abpromise guarantee](#) covers the use of **ab75258** in the following tested applications.

The application notes include recommended starting dilutions; optimal dilutions/concentrations should be determined by the end user.

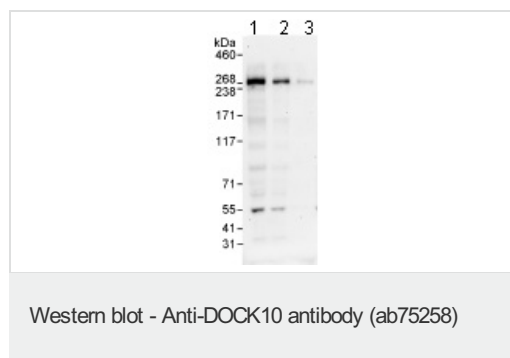
应用	Ab评论	说明
WB		1/2000 - 1/10000. Predicted molecular weight: 250 kDa.
IP		Use at 2-5 µg/mg of lysate.

靶标

相关性

DOCK10 is a potential guanine nucleotide exchange factor (GEF). GEF proteins activate some small GTPases by exchanging bound GDP for free GTP. Two named isoforms exist, produced by alternative splicing.

图片



All lanes : Anti-DOCK10 antibody (ab75258)
at 0.1 µg/ml

Lane 1 : HeLa whole cell lysate at 50 µg

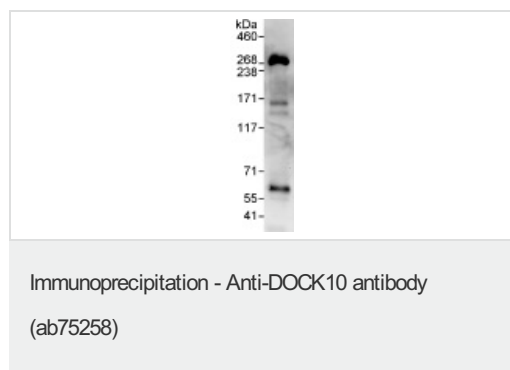
Lane 2 : HeLa whole cell lysate at 15 µg

Lane 3 : HeLa whole cell lysate at 5 µg

Predicted band size: 250 kDa

Observed band size: 250 kDa

Additional bands at: 55 kDa. We are unsure as to the identity of these extra bands.



Detection of DOCK10 by Western Blot of Immunoprecipitate.

ab75258 at 1µg/ml staining DOCK10 in HeLa whole cell lysate immunoprecipitated using ab75258 at 3µg/mg lysate (1 mg/IP; 20% of IP loaded).

Detection: chemiluminescence with exposure time of 1 minute.

Please note: All products are "FOR RESEARCH USE ONLY AND ARE NOT INTENDED FOR DIAGNOSTIC OR THERAPEUTIC USE"

Our Abpromise to you: Quality guaranteed and expert technical support

- Replacement or refund for products not performing as stated on the datasheet
- Valid for 12 months from date of delivery
- Response to your inquiry within 24 hours
- We provide support in Chinese, English, French, German, Japanese and Spanish
- Extensive multi-media technical resources to help you
- We investigate all quality concerns to ensure our products perform to the highest standards

If the product does not perform as described on this datasheet, we will offer a refund or replacement. For full details of the Abpromise,

please visit <http://www.abcam.cn/abpromise> or contact our technical team.

Terms and conditions

- Guarantee only valid for products bought direct from Abcam or one of our authorized distributors