

Product datasheet

Anti-DDR2 antibody ab76967

2 References 2 图像

概述

<b>产品名称</b>	Anti-DDR2抗体
<b>描述</b>	兔多克隆抗体to DDR2
<b>经测试应用</b>	<b>适用于:</b> WB, IHC-P
<b>种属反应性</b>	<b>与反应:</b> Mouse, Rat <b>预测可用于:</b> Cow, Dog, Human, Chimpanzee, Rhesus monkey 
<b>免疫原</b>	Synthetic peptide conjugated to KLH derived from within residues 1 - 100 of Human DDR2. 参阅 Abcam的专有抗源政策(Peptide available as <a href="#">ab86427</a> .)
<b>阳性对照</b>	This antibody gave a positive signal in the following Lysates: PC12 Whole Cell, Rat Liver Tissue, Mouse Pancreas Tissue and FFPE human skin melanoma tissue sections.

性能

<b>形式</b>	Liquid
<b>存放说明</b>	Shipped at 4°C. Store at +4°C short term (1-2 weeks). Upon delivery aliquot. Store at -20°C or -80°C. Avoid freeze / thaw cycle.
<b>存储溶液</b>	Preservative: 0.02% Sodium Azide Constituents: 1% BSA, PBS, pH 7.4
<b>纯度</b>	Immunogen affinity purified
<b>克隆</b>	多克隆
<b>同种型</b>	IgG

应用

Our [Abpromise guarantee](#) covers the use of **ab76967** in the following tested applications.

The application notes include recommended starting dilutions; optimal dilutions/concentrations should be determined by the end user.

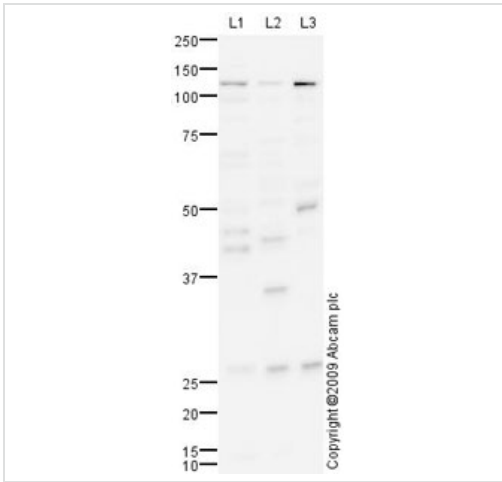
应用	Ab 评论	说明
WB		Use a concentration of 1 µg/ml. Detects a band of approximately 120 kDa (predicted molecular weight: 97 kDa). Abcam recommends using 3% milk as the blocking agent.

应用	Ab 评论	说明
IHC-P		Use a concentration of 5 µg/ml. Perform heat mediated antigen retrieval before commencing with IHC staining protocol.

## 靶标

功能	This tyrosine kinase receptor for fibrillar collagen mediates fibroblast migration and proliferation. Contributes to cutaneous wound healing.
组织特异性	The major 10 kDa transcript is expressed in high levels in heart and lung, less in brain, placenta, liver, skeletal muscle, pancreas, and kidney.
疾病相关	Defects in DDR2 are the cause of spondyloepimetaphyseal dysplasia short limb-hand type (SEMD-SL) [MIM:271665]. A bone disease characterized by short-limbed dwarfism, a narrow chest with pectus excavatum, brachydactyly in the hands and feet, a characteristic craniofacial appearance and premature calcifications. The radiological findings are distinctive and comprise short long bones throughout the skeleton with striking epiphyses that are stippled, flattened and fragmented and flared, irregular metaphyses. Platyspondyly in the spine with wide intervertebral spaces is observed and some vertebral bodies are pear-shaped with central humps, anterior protrusions and posterior scalloping.
序列相似性	Belongs to the protein kinase superfamily. Tyr protein kinase family. Insulin receptor subfamily. Contains 1 F5/8 type C domain. Contains 1 protein kinase domain.
细胞定位	Membrane.

## 图片



Western blot - DDR2 antibody (ab76967)

**All lanes :** Anti-DDR2 antibody (ab76967) at 1 µg/ml

**Lane 1 :** PC12 (Rat adrenal pheochromocytoma cell line) Whole Cell Lysate

**Lane 2 :** Liver (Rat) Tissue Lysate

**Lane 3 :** Pancreas (Mouse) Tissue Lysate

Lysates/proteins at 10 µg per lane.

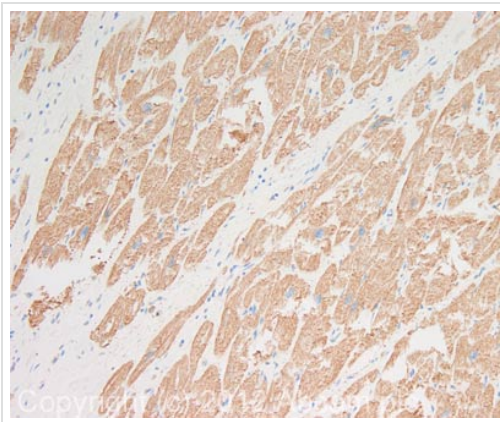
### Secondary

Goat polyclonal to Rabbit IgG - H&L - Pre-Adsorbed (HRP) at 1/3000 dilution  
Developed using the ECL technique

Performed under reducing conditions.

**Predicted band size :** 97 kDa

**Observed band size :** 120 kDa



Immunohistochemistry (Formalin/PFA-fixed paraffin-embedded sections) - Anti-DDR2 antibody (ab76967)

IHC image of DDR2 staining in human heart muscle formalin fixed paraffin embedded tissue section, performed on a Leica Bond™ system using the standard protocol F. The section was pre-treated using heat mediated antigen retrieval with sodium citrate buffer (pH6, epitope retrieval solution 1) for 20 mins. The section was then incubated with ab76967, 5µg/ml, for 15 mins at room temperature and detected using an HRP conjugated compact polymer system. DAB was used as the chromogen. The section was then counterstained with haematoxylin and mounted with DPX.

For other IHC staining systems (automated and non-automated) customers should optimize variable parameters such as antigen retrieval conditions, primary antibody concentration and antibody incubation times.

**Please note:** All products are "FOR RESEARCH USE ONLY AND ARE NOT INTENDED FOR DIAGNOSTIC OR THERAPEUTIC USE"

## **Our Abpromise to you: Quality guaranteed and expert technical support**

---

- Replacement or refund for products not performing as stated on the datasheet
- Valid for 12 months from date of delivery
- Response to your inquiry within 24 hours
  
- We provide support in Chinese, English, French, German, Japanese and Spanish
- Extensive multi-media technical resources to help you
- We investigate all quality concerns to ensure our products perform to the highest standards

If the product does not perform as described on this datasheet, we will offer a refund or replacement. For full details of the Abpromise, please visit <http://www.abcam.cn/abpromise> or contact our technical team.

## **Terms and conditions**

---

- Guarantee only valid for products bought direct from Abcam or one of our authorized distributors