


Product datasheet

Anti-DARC antibody ab58965

2 References 2 图像

概述

产品名称	Anti-DARC抗体
描述	兔多克隆抗体to DARC
宿主	Rabbit
经测试应用	适用于: ICC/IF, WB
种属反应性	与反应: Mouse, Human 预测可用于: Rat 
免疫原	A 16 amino acid peptide from near the carboxy terminus of human DARC.
阳性对照	WB: Mouse brain tissue lysate.

性能

形式	Liquid
存放说明	Shipped at 4°C. Store at +4°C.
存储溶液	Preservative: 0.02% Sodium Azide Constituents: PBS
纯度	Immunogen affinity purified
纯化说明	ab58965is purified.
克隆	多克隆
同种型	IgG

应用

Our [Abpromise guarantee](#) covers the use of **ab58965** in the following tested applications.

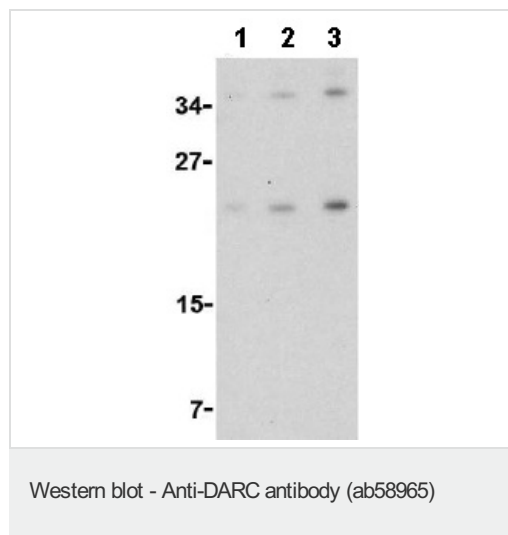
The application notes include recommended starting dilutions; optimal dilutions/concentrations should be determined by the end user.

应用	Ab评论	说明
ICC/IF		Use a concentration of 5 µg/ml.
WB		Use a concentration of 1 - 2 µg/ml. Detects a band of approximately 36 kDa (predicted molecular weight: 36 kDa).

靶标

功能	Non-specific receptor for many chemokines such as IL-8, GRO, RANTES, MCP-1 and TARC. It is also the receptor for the human malaria parasites Plasmodium vivax and Plasmodium knowlesi.
组织特异性	Found in adult kidney, adult spleen, bone marrow and fetal liver. In particular, it is expressed along postcapillary venules throughout the body, except in the adult liver. Erythroid cells and postcapillary venule endothelium are the principle tissues expressing duffy. Fy(-A-B) individuals do not express duffy in the bone marrow, however they do, in postcapillary venule endothelium.
序列相似性	Belongs to the G-protein coupled receptor Duffy family.
细胞定位	Membrane.

图片



Lane 1 : Anti-DARC antibody (ab58965) at 0.5 µg/ml

Lane 2 : Anti-DARC antibody (ab58965) at 1 µg/ml

Lane 3 : Anti-DARC antibody (ab58965) at 2 µg/ml

All lanes : mouse brain tissue lysate

Lysates/proteins at 15 µg per lane.

Secondary

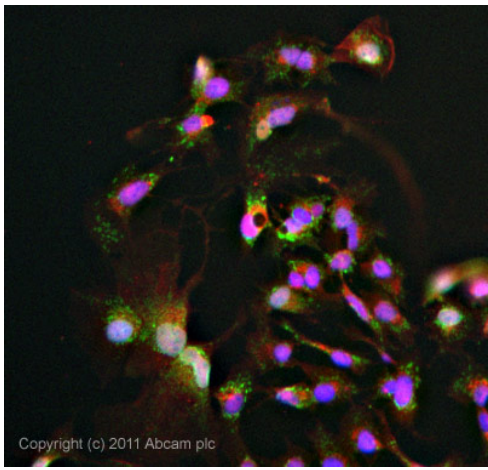
Lanes 1-2 : Anti-rabbit IgG HRP at 1/1000 dilution

Lane 3 : Anti-rabbit IgG HRP at 1/10000 dilution

Predicted band size: 36 kDa

Observed band size: 36 kDa

Additional bands at: 23 kDa. We are unsure as to the identity of these extra bands.



Immunocytochemistry/ Immunofluorescence - Anti-DARC antibody (ab58965)

ICC/IF image of ab58965 stained HeLa cells. The cells were 4% formaldehyde fixed (10 min) and then incubated in 1%BSA / 10% normal goat serum / 0.3M glycine in 0.1% PBS-Tween for 1h to permeabilise the cells and block non-specific protein-protein interactions. The cells were then incubated with the antibody (ab58965, 5µg/ml) overnight at +4°C. The secondary antibody (green) was ab96899, DyLight® 488 goat anti-rabbit IgG (H+L) used at a 1/250 dilution for 1h. Alexa Fluor® 594 WGA was used to label plasma membranes (red) at a 1/200 dilution for 1h. DAPI was used to stain the cell nuclei (blue) at a concentration of 1.43µM.

Please note: All products are "FOR RESEARCH USE ONLY AND ARE NOT INTENDED FOR DIAGNOSTIC OR THERAPEUTIC USE"

Our Abpromise to you: Quality guaranteed and expert technical support

- Replacement or refund for products not performing as stated on the datasheet
- Valid for 12 months from date of delivery
- Response to your inquiry within 24 hours
- We provide support in Chinese, English, French, German, Japanese and Spanish
- Extensive multi-media technical resources to help you
- We investigate all quality concerns to ensure our products perform to the highest standards

If the product does not perform as described on this datasheet, we will offer a refund or replacement. For full details of the Abpromise, please visit <http://www.abcam.cn/abpromise> or contact our technical team.

Terms and conditions

- Guarantee only valid for products bought direct from Abcam or one of our authorized distributors