

Product datasheet

Anti-DAP5 antibody ab97302

★★★★☆ 1 Abreviews 3 图像

概述

| | |
|-------|---|
| 产品名称 | Anti-DAP5抗体 |
| 描述 | 兔多克隆抗体to DAP5 |
| 经测试应用 | 适用于: WB, IHC-P, ICC/IF |
| 种属反应性 | 与反应: Human 预测可用于: Mouse, Rat, Rabbit, Cow |
| 免疫原 | Recombinant protein fragment containing a sequence corresponding to a region within amino acids 1 and 204 of Human DAP5 (NP_001409) |
| 阳性对照 | A431 whole cell lysate and Cal27. IF/ICC: HeLa cell line. |

性能

| | |
|------|--|
| 形式 | Liquid |
| 存放说明 | Shipped at 4°C. Upon delivery aliquot. Store at -20°C or -80°C. Avoid freeze / thaw cycle. |
| 存储溶液 | Preservative: 0.01% Thimerosal (merthiolate) Constituents: 40% Glycerol, PBS, pH 7.0 |
| 纯度 | Immunogen affinity purified |
| 克隆 | 多克隆 |
| 同种型 | IgG |

应用

Our [Abpromise guarantee](#) covers the use of **ab97302** in the following tested applications.

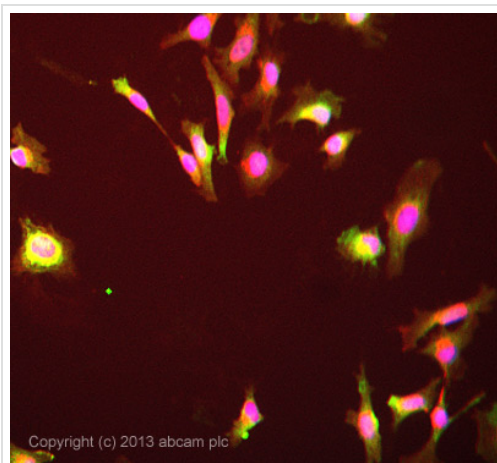
The application notes include recommended starting dilutions; optimal dilutions/concentrations should be determined by the end user.

| 应用 | Ab评论 | 说明 |
|--------|-------|--|
| WB | ★★★★☆ | 1/500 - 1/3000. Predicted molecular weight: 102 kDa. |
| IHC-P | | 1/100. |
| ICC/IF | | Use a concentration of 10 µg/ml. |

靶标

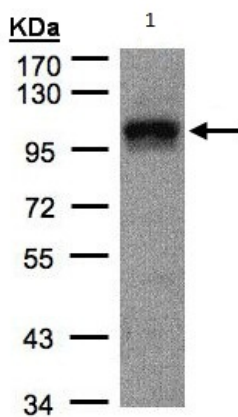
| | |
|--------------|---|
| 功能 | Appears to play a role in the switch from cap-dependent to IRES-mediated translation during mitosis, apoptosis and viral infection. Cleaved by some caspases and viral proteases. |
| 组织特异性 | Ubiquitously expressed in all adult tissues examined, with high levels in skeletal muscle and heart. Also expressed in fetal brain, lung, liver and kidney. |
| 序列相似性 | Belongs to the eIF4G family. Contains 1 MI domain. Contains 1 MIF4G domain. Contains 1 W2 domain. |
| 翻译后修饰 | Phosphorylation; hyperphosphorylated during mitosis. |

图片



Immunocytochemistry/ Immunofluorescence - Anti-DAP5 antibody (ab97302)

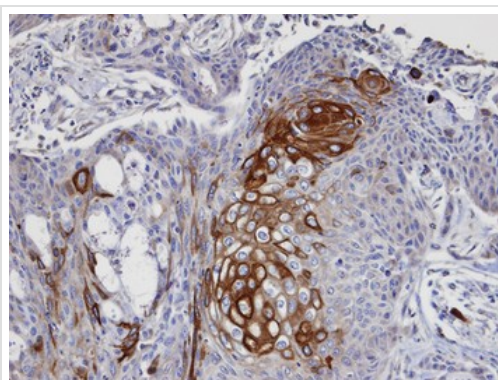
ICC/IF image of ab97302 stained HeLa cells. The cells were 4% formaldehyde fixed (10 min) and then incubated in 1%BSA / 10% normal goat serum / 0.3M glycine in 0.1% PBS-Tween for 1h to permeabilise the cells and block non-specific protein-protein interactions. The cells were then incubated with the antibody (ab97302, 10µg/ml) overnight at +4°C. The secondary antibody (green) was [ab96899](#), DyLight® 488 goat anti-rabbit IgG (H+L) used at a 1/250 dilution for 1h. Alexa Fluor® 594 WGA was used to label plasma membranes (red) at a 1/200 dilution for 1h. DAPI was used to stain the cell nuclei (blue) at a concentration of 1.43µM.



Anti-DAP5 antibody (ab97302) at 1/1000 dilution + A431 whole cell lysate at 30 µg

Predicted band size : 102 kDa
7.5% SDS PAGE

Western blot - DAP5 antibody (ab97302)



Immunohistochemical analysis of paraffin-embedded Cal27, using ab97302 at 1/100 dilution

Immunohistochemistry (Formalin/PFA-fixed paraffin-embedded sections) - DAP5 antibody (ab97302)

Please note: All products are "FOR RESEARCH USE ONLY AND ARE NOT INTENDED FOR DIAGNOSTIC OR THERAPEUTIC USE"

Our Abpromise to you: Quality guaranteed and expert technical support

- Replacement or refund for products not performing as stated on the datasheet
- Valid for 12 months from date of delivery
- Response to your inquiry within 24 hours
- We provide support in Chinese, English, French, German, Japanese and Spanish
- Extensive multi-media technical resources to help you
- We investigate all quality concerns to ensure our products perform to the highest standards

If the product does not perform as described on this datasheet, we will offer a refund or replacement. For full details of the Abpromise, please visit <http://www.abcam.cn/abpromise> or contact our technical team.

Terms and conditions

- Guarantee only valid for products bought direct from Abcam or one of our authorized distributors