

## Product datasheet

# Anti-Cytokeratin 19 antibody [BA16] ab20210

★★★★★ 2 Abreviews 1 References 5 图像

### 概述

|       |  |
|-------|--|
| 产品名称  | Anti-Cytokeratin 19抗体[BA16]  |
| 描述    | 小鼠单克隆抗体[BA16] to Cytokeratin 19                                    |
| 经测试应用 | 适用于: WB, IHC-Fr, Flow Cyt, ICC, IHC-P                              |
| 种属反应性 | 与反应: Human   |
| 免疫原   | Detergent-insoluble extract of human mammary epithelial organoids. |
| 常规说明  | This antibody clone is manufactured by Abcam.                      |

### 性能

|      |  |
|------|--|
| 形式   | Liquid   |
| 存放说明 | Shipped at 4°C. Store at +4°C short term (1-2 weeks). Upon delivery aliquot. Store at -20°C or -80°C. Avoid freeze / thaw cycle. |
| 存储溶液 | Preservative: 0.02% Sodium azide<br>Constituent: PBS   |
| 纯度   | Protein G purified   |
| 克隆   | 单克隆  |
| 克隆编号 | BA16   |
| 骨髓瘤  | x63-Ag8.653  |
| 同种型  | IgG1   |
| 轻链类型 | unknown  |

### 应用

Our [Abpromise guarantee](#) covers the use of **ab20210** in the following tested applications.

The application notes include recommended starting dilutions; optimal dilutions/concentrations should be determined by the end user.

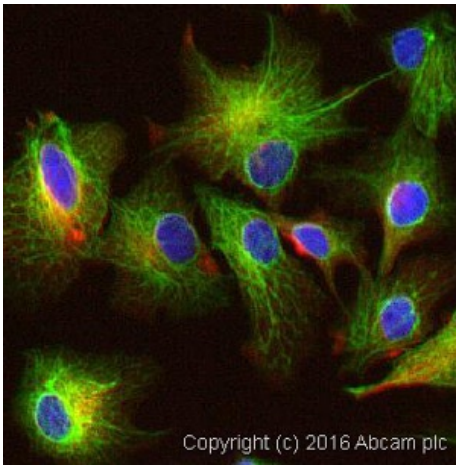
| 应用     | Ab评论  | 说明   |
|--------|-------|--|
| WB     |       | Use at an assay dependent concentration. Predicted molecular weight: 40 kDa. |
| IHC-Fr | ★★★★★ | Use at an assay dependent concentration.                                     |

|          |  |
|----------|--|
| Flow Cyt | Use 1µg for 10 <sup>6</sup> cells.<br><a href="#">ab170190</a> -Mouse monoclonal IgG1, is suitable for use as an isotype control with this antibody. |
| ICC      | ★★★★★ Use a concentration of 5 - 10 µg/ml.   |
| IHC-P    | Use a concentration of 5 µg/ml. Perform heat mediated antigen retrieval before commencing with IHC staining protocol.                                |

## 靶标

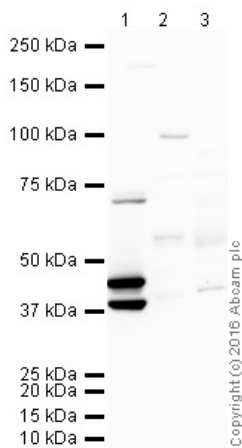
|       |  |
|-------|--|
| 功能    | Involved in the organization of myofibers. Together with KRT8, helps to link the contractile apparatus to dystrophin at the costameres of striated muscle.   |
| 组织特异性 | Expressed in a defined zone of basal keratinocytes in the deep outer root sheath of hair follicles. Also observed in sweat gland and mammary gland ductal and secretory cells, bile ducts, gastrointestinal tract, bladder urothelium, oral epithelia, esophagus, ectocervical epithelium (at protein level). Expressed in epidermal basal cells, in nipple epidermis and a defined region of the hair follicle. Also seen in a subset of vascular wall cells in both the veins and artery of human umbilical cord, and in umbilical cord vascular smooth muscle. Observed in muscle fibers accumulating in the costameres of myoplasm at the sarcolemma in structures that contain dystrophin and spectrin. |
| 序列相似性 | Belongs to the intermediate filament family.   |
| 发展阶段  | Present in hair follicles at all stages of development.  |
| 结构域   | This keratin differs from all other IF proteins in lacking the C-terminal tail domain.   |

## Anti-Cytokeratin 19 antibody [BA16] 图像



Immunocytochemistry/ Immunofluorescence - Anti-Cytokeratin 19 antibody [BA16] (ab20210)

ab20210 stained HepG2 cells. The cells were 100% methanol fixed for 5 minutes at room temperature and then incubated in 1%BSA / 10% normal Goat serum / 0.3M glycine in 0.1% PBS-Tween for 1hour at room temperature to permeabilise the cells and block non-specific protein-protein interactions. The cells were then incubated with the antibody (ab20210 at 10µg/ml) overnight at +4°C. The secondary antibody (pseudo-colored green) was [ab150117](#) used at a 1/1000 dilution for 1hour at room temperature. The cells were counterstained with [ab202277](#) (Rabbit monoclonal to alpha Tubulin (Alexa Fluor® 594) (pseudo-colored red) at a 1/200 dilution for 1hour at room temperature. DAPI was used to stain the cell nuclei (pseudo-colored blue) at a concentration of 1.43µM for 1hour at room temperature.



Western blot - Anti-Cytokeratin 19 antibody [BA16]  
(ab20210)

**All lanes** : Anti-Cytokeratin 19 antibody  
[BA16] (ab20210) at 1 µg/ml

**Lane 1** : MCF7 (Human breast  
adenocarcinoma cell line) Whole Cell Lysate

**Lane 2** : Human liver tissue lysate - total  
protein ([ab29889](#))

**Lane 3** : Human tonsil normal tissue lysate -  
total protein ([ab29615](#))

Lysates/proteins at 10 µg per lane.

### Secondary

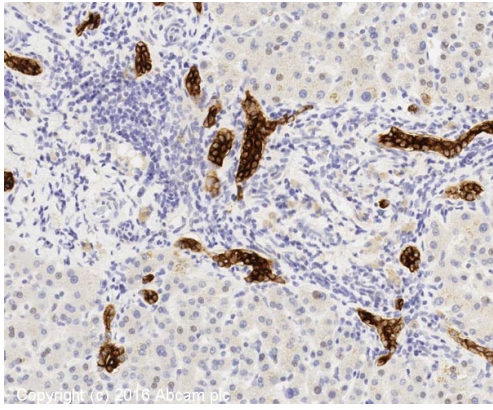
Goat polyclonal to Mouse IgG - H&L - Pre-  
Adsorbed (HRP) at 1/5000 dilution  
Developed using the ECL technique

Performed under reducing conditions.

**Predicted band size** : 40 kDa

**Observed band size** : 40,44 kDa

**Exposure time** : 1 minute

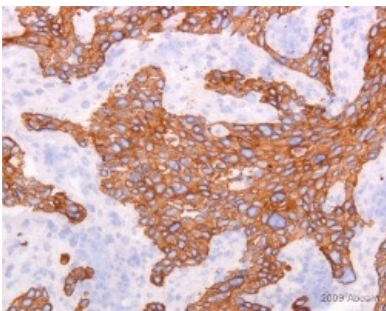


Immunohistochemistry (Formalin/PFA-fixed paraffin-embedded sections) - Anti-Cytokeratin 19 antibody [BA16] (ab20210)

IHC image of Cytokeratin 19 staining in human normal liver formalin fixed paraffin embedded tissue section\*, performed on a Leica Bond™ system using the standard protocol F. The section was pre-treated using heat mediated antigen retrieval with sodium citrate buffer (pH6, epitope retrieval solution 1) for 20 mins. The section was then incubated with ab20210, 5µg/ml, for 15 mins at room temperature and detected using an HRP conjugated compact polymer system. DAB was used as the chromogen. The section was then counterstained with haematoxylin and mounted with DPX.

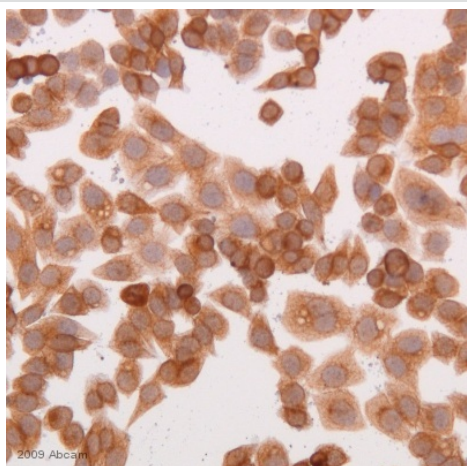
For other IHC staining systems (automated and non-automated) customers should optimize variable parameters such as antigen retrieval conditions, primary antibody concentration and antibody incubation times.

*\*Tissue obtained from the Human Research Tissue Bank, supported by the NIHR Cambridge Biomedical Research Centre*



Immunohistochemistry (Frozen sections) - Cytokeratin 19 antibody [BA16] (ab20210)  
This image is a courtesy of Rene Villadsen

ab20210 staining Cytokeratin 19 in human breast carcinoma tissue section by Immunohistochemistry (Frozen sections). Tissue samples were fixed with methanol and blocking with 10% serum for 5 minutes was performed. The sample was incubated with primary antibody (1/100) in PBS with 10% goat serum for 1 hour. A HRP-conjugated rabbit polyclonal to mouse IgG was used undiluted as secondary antibody.



ab20210 at 1/100 dilution staining Cytokeratin 19 breast cancer cell line by immunocytochemistry. Sections were methanol fixed prior to blocking in 10% serum for 5 minutes and then incubated with ab20210, for 1 hour at 25°C. Ultravision ONE HRP rabbit polyclonal to mouse Ig was used as the secondary antibody.

Immunocytochemistry - Cytokeratin 19 antibody

[BA16] (ab20210)

This image is courtesy of an Abreview submitted by Rene Villadsen

**Please note:** All products are "FOR RESEARCH USE ONLY AND ARE NOT INTENDED FOR DIAGNOSTIC OR THERAPEUTIC USE"

### Our Abpromise to you: Quality guaranteed and expert technical support

- Replacement or refund for products not performing as stated on the datasheet
- Valid for 12 months from date of delivery
- Response to your inquiry within 24 hours
- We provide support in Chinese, English, French, German, Japanese and Spanish
- Extensive multi-media technical resources to help you
- We investigate all quality concerns to ensure our products perform to the highest standards

If the product does not perform as described on this datasheet, we will offer a refund or replacement. For full details of the Abpromise, please visit <http://www.abcam.cn/abpromise> or contact our technical team.

### Terms and conditions

- Guarantee only valid for products bought direct from Abcam or one of our authorized distributors