

Product datasheet

Anti-Cytokeratin 15 antibody [LHK15] ab80522

★★★★★ 2 Abreviews 3 References 5 图像

概述

产品名称	Anti-Cytokeratin 15抗体[LHK15]
描述	小鼠单克隆抗体[LHK15] to Cytokeratin 15
宿主	Mouse
经测试应用	适用于: ICC/IF, IHC-P, Flow Cyt
种属反应性	与反应: Mouse, Rat, Cow, Human
免疫原	17 amino acids synthetic peptide derived from the C terminal region of Human Cytokeratin 15
阳性对照	IHC-P: FFPE human breast normal. ICC-IF: A431 cells.
常规说明	This antibody clone is manufactured by Abcam. If you require this antibody in a particular buffer formulation or a particular conjugate for your experiments, please contact orders@abcam.com or you can find further information here .

性能

形式	Liquid
存放说明	Shipped at 4°C. Upon delivery aliquot and store at -20°C or -80°C. Avoid repeated freeze / thaw cycles.
存储溶液	pH: 7.40 Preservative: 0.02% Sodium azide Constituent: PBS
纯度	Immunogen affinity purified
克隆	单克隆
克隆编号	LHK15
同种型	IgG2a
轻链类型	kappa

应用

Our [Abpromise guarantee](#) covers the use of **ab80522** in the following tested applications.

The application notes include recommended starting dilutions; optimal dilutions/concentrations should be determined by the end user.

应用	Ab评论	说明
ICC/IF	★★★★★	Use a concentration of 5 µg/ml.
IHC-P	★★★★★	Use at an assay dependent concentration.
Flow Cyt		Use 1µg for 10 ⁶ cells. ab170191 - Mouse monoclonal IgG2a, is suitable for use as an isotype control with this antibody.

靶标

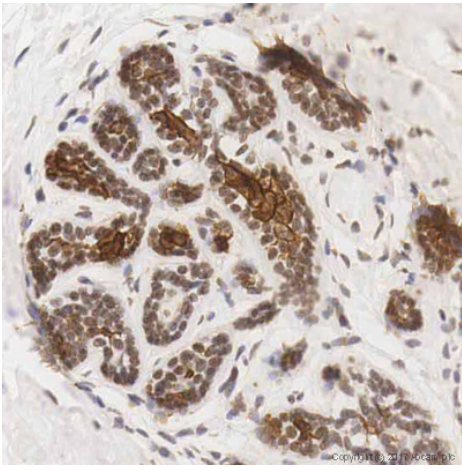
组织特异性

Expressed in a discontinuous manner in the basal cell layer of adult skin epidermis, but continuously in the basal layer of fetal skin epidermis and nail. Also expressed in the outer root sheath above the hair bulb in hair follicle (at protein level). Expressed homogeneously in all cell layers of the esophagus and exocervix, but detected in the basal cell layer only of oral mucosa, skin and in the basal plus the next two layers of the suprabasal epithelium of the palate.

序列相似性

Belongs to the intermediate filament family.

图片

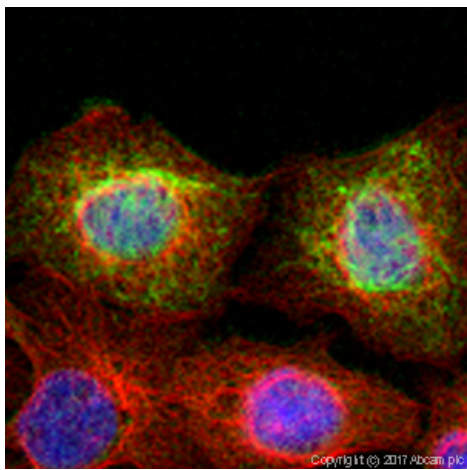


Immunohistochemistry (Formalin/PFA-fixed paraffin-embedded sections) - Anti-Cytokeratin 15 antibody [LHK15] (ab80522)

IHC image of Cytokeratin 15 staining in a formalin fixed, paraffin embedded normal human breast tissue section*, performed on a Leica Bond™ system using the standard protocol F. The section was pre-treated using heat mediated antigen retrieval with sodium citrate buffer (pH6, epitope retrieval solution 1) for 20 mins. The section was then incubated with ab80522, 5µg/ml, for 15 mins at room temperature and detected using an HRP conjugated compact polymer system. DAB was used as the chromogen. The section was then counterstained with haematoxylin and mounted with DPX.

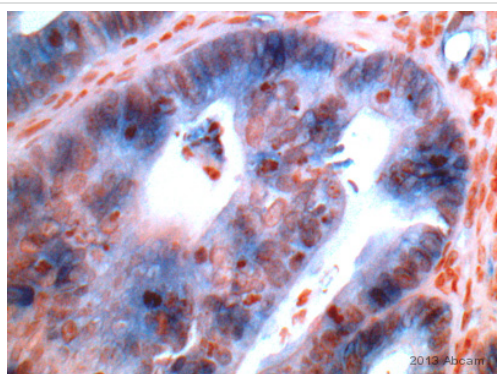
For other IHC staining systems (automated and non-automated) customers should optimize variable parameters such as antigen retrieval conditions, primary antibody concentration and antibody incubation times.

*Tissue obtained from the Human Research Tissue Bank, supported by the NIHR Cambridge Biomedical Research Centre



Immunocytochemistry/ Immunofluorescence - Anti-Cytokeratin 15 antibody [LHK15] (ab80522)

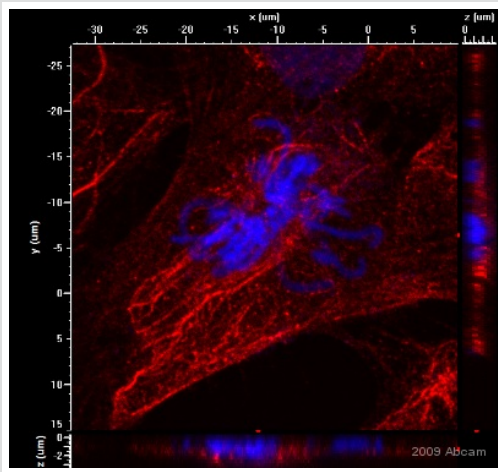
ab80522 stained in A431 cells. The cells were fixed with 4% paraformaldehyde (10min) at room temperature and incubated with PBS containing 10% goat serum, 0.3 M glycine, 1% BSA and 0.1% triton for 1 hour at room temperature to permeabilise the cells and block non-specific protein-protein interactions. The cells were then incubated with the antibody ab80522 at 5 µg/ml and ab6046 (Rabbit polyclonal to beta tubulin) at 1ug/ml overnight at +4°C. The secondary antibodies were ab150117 (colored green) used at 1 ug/ml and ab150087 (pseudo-colored red) used at 2 µg/ml for 1 hour at room temperature. DAPI was used to stain the cell nuclei (colored blue) at a concentration of 1.43 µM for 1 hour at room temperature.



Immunohistochemistry (Formalin/PFA-fixed paraffin-embedded sections) - Anti-Cytokeratin 15 antibody [LHK15] (ab80522)

This image is courtesy of an anonymous Abreview

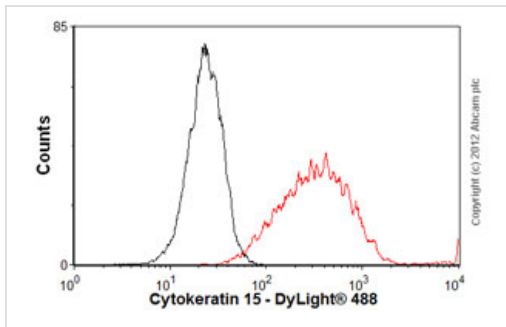
ab80522 staining Cytokeratin 15 in mouse colon tissue sections by Immunohistochemistry (IHC-P - paraformaldehyde-fixed, paraffin-embedded sections). Tissue was fixed with formaldehyde; antigen retrieval was by heat mediation. Samples were incubated with primary antibody (undiluted) for 10 hours.



Immunocytochemistry/ Immunofluorescence - Anti-Cytokeratin 15 antibody [LHK15] (ab80522)

This image is courtesy of an Abreview submitted by Maciej Gagat

[ab8969](#) staining keratin 15 in rat hair follicles by immunocytochemistry/ immunofluorescence. Cells were paraformaldehyde fixed and permeabilized in 0.25% Triton X-100 prior to blocking in 1% BSA for 10 minutes at 21°C. The primary antibody was diluted 1/100 and incubated with the sample for 1 hour at 21°C. A TRITC conjugated mouse anti-mouse antibody, diluted 1/85, was used as the secondary.



Flow Cytometry - Anti-Cytokeratin 15 antibody [LHK15] (ab80522)

Overlay histogram showing A431 cells stained with ab80522 (red line). The cells were fixed with 80% methanol (5 min) and then permeabilized with 0.1% PBS-Tween for 20 min. The cells were then incubated in 1x PBS / 10% normal goat serum / 0.3M glycine to block non-specific protein-protein interactions. The cells were then incubated with the antibody (ab80522, 1µg/1x10⁶ cells) for 30 min at 22°C. The secondary antibody used was DyLight® 488 goat anti-mouse IgG (H+L) ([ab96879](#)) at 1/500 dilution for 30 min at 22°C. Isotype control antibody (black line) was mouse IgG2a [ICIGG2A] ([ab91361](#), 1µg/1x10⁶ cells) used under the same conditions. Acquisition of >5,000 events was performed.

Please note: All products are "FOR RESEARCH USE ONLY AND ARE NOT INTENDED FOR DIAGNOSTIC OR THERAPEUTIC USE"

Our Abpromise to you: Quality guaranteed and expert technical support

- Replacement or refund for products not performing as stated on the datasheet
- Valid for 12 months from date of delivery
- Response to your inquiry within 24 hours
- We provide support in Chinese, English, French, German, Japanese and Spanish
- Extensive multi-media technical resources to help you

- We investigate all quality concerns to ensure our products perform to the highest standards

If the product does not perform as described on this datasheet, we will offer a refund or replacement. For full details of the Abpromise, please visit <http://www.abcam.cn/abpromise> or contact our technical team.

Terms and conditions

- Guarantee only valid for products bought direct from Abcam or one of our authorized distributors