

Product datasheet

Anti-Cytochrome p450 2J2 antibody ab69651

1 References 3 图像

概述

产品名称	Anti-Cytochrome p450 2J2抗体
描述	兔多克隆抗体to Cytochrome p450 2J2
经测试应用	适用于: ELISA, WB, IHC-P, ICC/IF
种属反应性	与反应: Human
免疫原	Synthetic peptide (Human) derived from an internal region of Cytochrome p450 2J2.
阳性对照	Extracts from A549, RAW264.7 and NIH-3T3 cells. Human heart tissue. HepG2 and COS7 cells.

性能

形式	Liquid
存放说明	Shipped at 4°C. Upon delivery aliquot and store at -20°C. Avoid freeze / thaw cycles.
存储溶液	Preservative: 0.02% Sodium Azide Constituents: 50% Glycerol, PBS (without Mg <sup>2+</sup> and Ca <sup>2+</sup> ), 150mM Sodium chloride, pH 7.4
纯度	Immunogen affinity purified
克隆	多克隆
同种型	IgG

应用

Our [Abpromise guarantee](#) covers the use of **ab69651** in the following tested applications.

The application notes include recommended starting dilutions; optimal dilutions/concentrations should be determined by the end user.

应用	Ab评论	说明
ELISA		
WB		
IHC-P		
ICC/IF		

## 应用说明

ELISA: 1/10000.

ICC/IF: 1/500 - 1/1000.

IHC-P: 1/50 - 1/100.

WB: 1/500 - 1/1000. Detects a band of approximately 58 kDa (predicted molecular weight: 58 kDa). Whole Cell Lysis Buffer (4?) is recommended. For example: Solution Final Concentration  
KCl 50mM

NP-40 1%

HEPES (pH7.8) 25mM

DTT 125uM

Na3VO4 1mM

NaF 1mM

+ fresh protease and phosphatase inhibitors

Not yet tested in other applications.

Optimal dilutions/concentrations should be determined by the end user.

## 靶标

### 功能

This enzyme metabolizes arachidonic acid predominantly via a NADPH-dependent olefin epoxidation to all four regioisomeric cis-epoxyeicosatrienoic acids. One of the predominant enzymes responsible for the epoxidation of endogenous cardiac arachidonic acid pools.

### 组织特异性

Highly expressed in heart, present at lower levels in liver, ileum, jejunum, colon, and kidney.

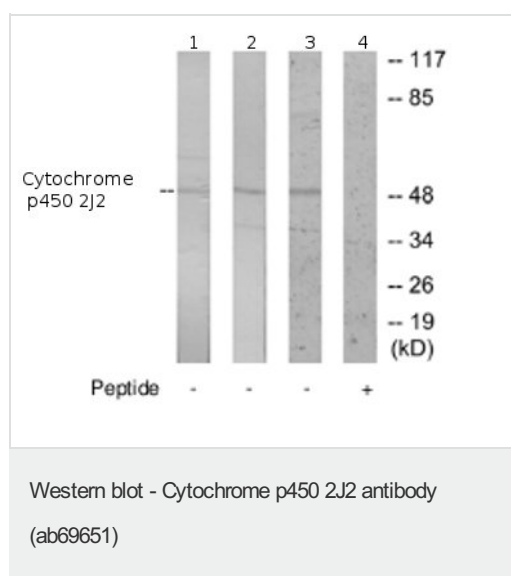
### 序列相似性

Belongs to the cytochrome P450 family.

### 细胞定位

Endoplasmic reticulum membrane. Microsome membrane.

## 图片



**All lanes :** Anti-Cytochrome p450 2J2 antibody (ab69651) at 1/500 dilution

**Lane 1 :** Extracts from A549 cells

**Lane 2 :** Extracts from RAW264.7 cells

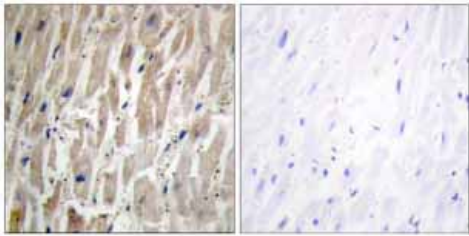
**Lane 3 :** Extracts from NIH-3T3 cells

**Lane 4 :** Extracts from NIH-3T3 cells with immunising peptide at 5 µg

Lysates/proteins at 5 µg per lane.

**Predicted band size :** 58 kDa

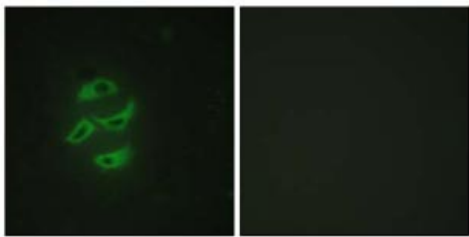
**Observed band size :** 58 kDa



Peptide - +

Immunohistochemistry (Formalin/PFA-fixed paraffin-embedded sections) - Cytochrome p450 2J2 antibody (ab69651)

Immunohistochemistry analysis of paraffin-embedded human heart tissue stained with ab69651 at 1/50 dilution, with and without the immunising peptide.



Peptide - +

Immunocytochemistry/ Immunofluorescence - Cytochrome p450 2J2 antibody (ab69651)

Immunofluorescence analysis of HepG2 cells using ab69651 at 1/500 dilution, with and without the immunising peptide.

**Please note:** All products are "FOR RESEARCH USE ONLY AND ARE NOT INTENDED FOR DIAGNOSTIC OR THERAPEUTIC USE"

### Our Abpromise to you: Quality guaranteed and expert technical support

- Replacement or refund for products not performing as stated on the datasheet
- Valid for 12 months from date of delivery
- Response to your inquiry within 24 hours
- We provide support in Chinese, English, French, German, Japanese and Spanish
- Extensive multi-media technical resources to help you
- We investigate all quality concerns to ensure our products perform to the highest standards

If the product does not perform as described on this datasheet, we will offer a refund or replacement. For full details of the Abpromise, please visit <http://www.abcam.cn/abpromise> or contact our technical team.

### Terms and conditions

- Guarantee only valid for products bought direct from Abcam or one of our authorized distributors