


Product datasheet

Anti-Cytochrome b5 antibody ab69801

7 References 3 图像

概述

产品名称	Anti-Cytochrome b5抗体
描述	兔多克隆抗体to Cytochrome b5
宿主	Rabbit
经测试应用	适用于: ELISA, WB, ICC/IF, IHC-P
种属反应性	与反应: Rat, Human 预测可用于: Mouse 
免疫原	Synthetic peptide derived from an internal region of Human Cytochrome b5.
阳性对照	NIH/3T3 cells; extracts from A549 cells.

性能

形式	Liquid
存放说明	Shipped at 4°C. Upon delivery aliquot and store at -20°C. Avoid freeze / thaw cycles.
存储溶液	Preservative: 0.02% Sodium Azide Constituents: 50% Glycerol, PBS (without Mg ²⁺ and Ca ²⁺), 150mM Sodium chloride, pH 7.4
纯度	Immunogen affinity purified
克隆	多克隆
同种型	IgG

应用

Our [Abpromise guarantee](#) covers the use of **ab69801** in the following tested applications.

The application notes include recommended starting dilutions; optimal dilutions/concentrations should be determined by the end user.

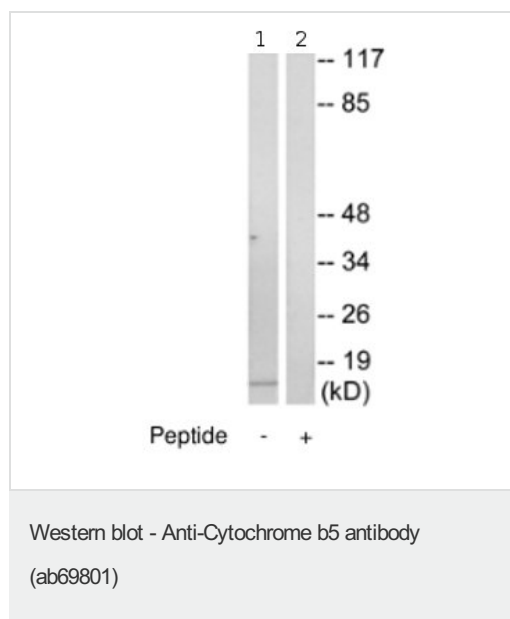
应用	Ab评论	说明
ELISA		1/5000.
WB		1/500 - 1/1000. Detects a band of approximately 15 kDa (predicted molecular weight: 15 kDa).

应用	Ab评论	说明
ICC/IF		1/500 - 1/1000.
IHC-P		Use a concentration of 1 µg/ml. Perform heat mediated antigen retrieval with citrate buffer pH 6 before commencing with IHC staining protocol.

靶标

功能	Cytochrome b5 is a membrane bound hemoprotein which function as an electron carrier for several membrane bound oxygenases.
疾病相关	Defects in CYB5A are the cause of methemoglobinemia CYB5A-related (METHB-CYB5A) [MIM:250790]. A form of methemoglobinemia, a hematologic disease characterized by the presence of excessive amounts of methemoglobin in blood cells, resulting in decreased oxygen carrying capacity of the blood, cyanosis and hypoxia.
序列相似性	Belongs to the cytochrome b5 family. Contains 1 cytochrome b5 heme-binding domain.
细胞定位	Cytoplasm and Endoplasmic reticulum membrane. Microsome membrane.

图片



All lanes : Anti-Cytochrome b5 antibody (ab69801) at 1/500 dilution

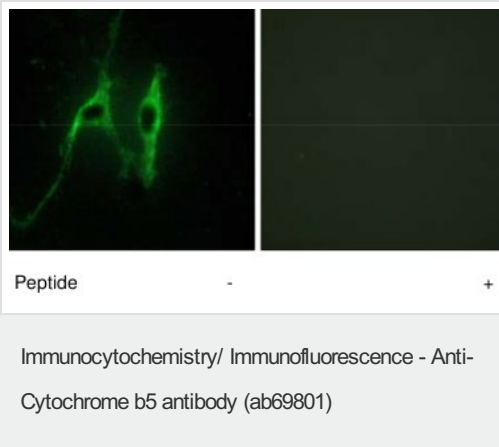
Lane 1 : extracts from A549 cells

Lane 2 : extracts from A549 cells with immunizing peptide at 10 µg

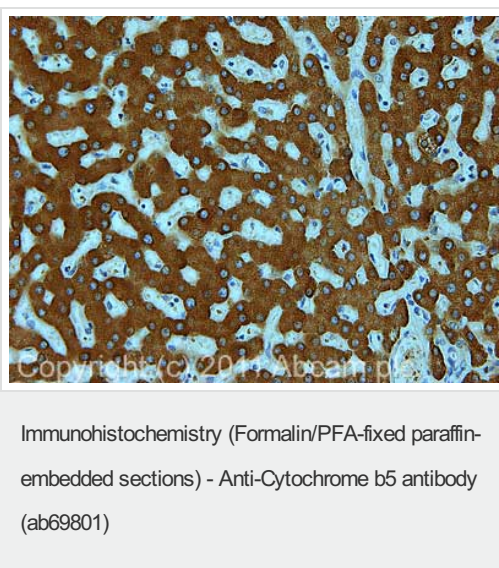
Lysates/proteins at 15 µg per lane.

Predicted band size: 15 kDa

Observed band size: 15 kDa



Left: NIH/3T3 cells stained with ab69801 at 1/500 dilution; Right: the antibody was pre-incubated with the immunizing peptide.



IHC image of ab69801 staining in human normal liver formalin fixed paraffin embedded tissue section, performed on a Leica Bond™ system using the standard protocol F. The section was pre-treated using heat mediated antigen retrieval with sodium citrate buffer (pH6, epitope retrieval solution 1) for 20 mins. The section was then incubated with ab69801, 1µg/ml, for 15 mins at room temperature and detected using an HRP conjugated compact polymer system. DAB was used as the chromogen. The section was then counterstained with haematoxylin and mounted with DPX.

For other IHC staining systems (automated and non-automated) customers should optimize variable parameters such as antigen retrieval conditions, primary antibody concentration and antibody incubation times.

Please note: All products are "FOR RESEARCH USE ONLY AND ARE NOT INTENDED FOR DIAGNOSTIC OR THERAPEUTIC USE"

Our Promise to you: Quality guaranteed and expert technical support

- Replacement or refund for products not performing as stated on the datasheet
- Valid for 12 months from date of delivery
- Response to your inquiry within 24 hours
- We provide support in Chinese, English, French, German, Japanese and Spanish
- Extensive multi-media technical resources to help you
- We investigate all quality concerns to ensure our products perform to the highest standards

If the product does not perform as described on this datasheet, we will offer a refund or replacement. For full details of the Abpromise, please visit <http://www.abcam.cn/abpromise> or contact our technical team.

Terms and conditions

- Guarantee only valid for products bought direct from Abcam or one of our authorized distributors