

## Product datasheet

# Anti-Cytochrome C antibody [EP1326-80-5] ab76107

**重组** RabMAb

★★★★☆ 2 Abreviews 2 图像

### 概述

产品名称	Anti-Cytochrome C抗体[EP1326-80-5]
描述	兔单克隆抗体[EP1326-80-5] to Cytochrome C
经测试应用	适用于: WB, IP, IHC-P, ICC 不适用于: Flow Cyt
种属反应性	与反应: Mouse, Rat, Human
免疫原	A synthetic peptide corresponding to residues near the N terminus of human Cytochrome C
阳性对照	HeLa, COS and L929 cell lysates; human kidney tissue.
常规说明	This product is a recombinant rabbit monoclonal antibody.

Our RabMAb<sup>®</sup> technology is a patented hybridoma-based technology for making rabbit monoclonal antibodies. For details on our patents, please refer to [RabMAb<sup>®</sup> patents](#)

### 性能

形式	Liquid
存放说明	Shipped at 4°C. Store at -20°C. Stable for 12 months at -20°C.
存储溶液	PBS 49%,Sodium azide 0.01%,Glycerol 50%,BSA 0.05%
纯度	Tissue culture supernatant
克隆	单克隆
克隆编号	EP1326-80-5
同种型	IgG

### 应用

Our [Abpromise guarantee](#) covers the use of **ab76107** in the following tested applications.

The application notes include recommended starting dilutions; optimal dilutions/concentrations should be determined by the end user.

应用	Ab评论	说明
WB		1/500. Predicted molecular weight: 12 kDa.
IP		1/50.
IHC-P		1/100 - 1/250. Perform heat mediated antigen retrieval before commencing with IHC staining protocol.
ICC		1/50 - 1/100.

**应用说明** Is unsuitable for Flow Cyt.

## 靶标

**功能** Electron carrier protein. The oxidized form of the cytochrome c heme group can accept an electron from the heme group of the cytochrome c1 subunit of cytochrome reductase. Cytochrome c then transfers this electron to the cytochrome oxidase complex, the final protein carrier in the mitochondrial electron-transport chain. Plays a role in apoptosis. Suppression of the anti-apoptotic members or activation of the pro-apoptotic members of the Bcl-2 family leads to altered mitochondrial membrane permeability resulting in release of cytochrome c into the cytosol. Binding of cytochrome c to Apaf-1 triggers the activation of caspase-9, which then accelerates apoptosis by activating other caspases.

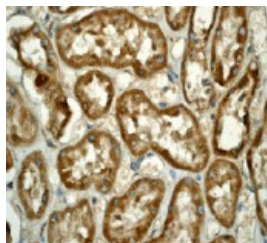
**疾病相关** Defects in CYCS are the cause of thrombocytopenia type 4 (THC4) [MIM:612004]; also known as autosomal dominant thrombocytopenia type 4. Thrombocytopenia is the presence of relatively few platelets in blood. THC4 is a non-syndromic form of thrombocytopenia. Clinical manifestations of thrombocytopenia are absent or mild. THC4 may be caused by dysregulated platelet formation.

**序列相似性** Belongs to the cytochrome c family.

**翻译后修饰** Binds 1 heme group per subunit.

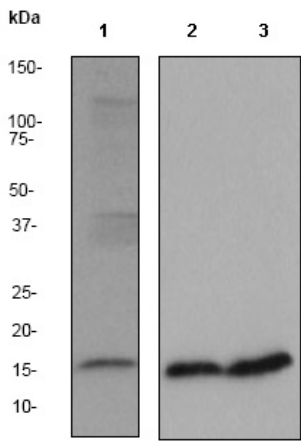
**细胞定位** Mitochondrion matrix.

## 图片



ab76107 at 1/100 dilution staining Cytochrome C in human kidney by Immunohistochemistry using paraffin-embedded tissue.

Immunohistochemistry (Formalin/PFA-fixed paraffin-embedded sections) - Cytochrome C antibody [EP1326Y] (ab76107)



Western blot - Cytochrome C antibody [EP1326Y]  
(ab76107)

**All lanes :** Anti-Cytochrome C antibody  
[EP1326-80-5] (ab76107) at 1/200 dilution

**Lane 1 :** HeLa cell lysate

**Lane 2 :** COS cell lysate

**Lane 3 :** L929 cell lysate

Lysates/proteins at 10 µg per lane.

**Secondary**

goat anti-rabbit HRP at 1/2000 dilution

**Predicted band size :** 12 kDa

**Observed band size :** 15 kDa

**Please note:** All products are "FOR RESEARCH USE ONLY AND ARE NOT INTENDED FOR DIAGNOSTIC OR THERAPEUTIC USE"

**Our Abpromise to you: Quality guaranteed and expert technical support**

- Replacement or refund for products not performing as stated on the datasheet
- Valid for 12 months from date of delivery
- Response to your inquiry within 24 hours
- We provide support in Chinese, English, French, German, Japanese and Spanish
- Extensive multi-media technical resources to help you
- We investigate all quality concerns to ensure our products perform to the highest standards

If the product does not perform as described on this datasheet, we will offer a refund or replacement. For full details of the Abpromise, please visit <http://www.abcam.cn/abpromise> or contact our technical team.

**Terms and conditions**

- Guarantee only valid for products bought direct from Abcam or one of our authorized distributors