


Product datasheet

Anti-Cyclophilin A antibody ab77188

1 图像

概述

| | |
|--------------|---|
| 产品名称 | Anti-Cyclophilin A抗体 |
| 描述 | 山羊多克隆抗体to Cyclophilin A |
| 宿主 | Goat |
| 特异性 | This antibody is expected to recognise both isoform 1 (NP_066953.1) and isoform 2 (NP_982254.1 and NP_982255.1). This product is expected to recognise PPIAL (NP_001008741.1, GeneID: 388817) which is identical to isoform 1 (NP_066953.1). |
| 经测试应用 | 适用于: WB |
| 种属反应性 | 与反应: Human 预测可用于: Mouse, Rat, Cow, Cat, Dog, Pig, Chimpanzee, Baboon, Cynomolgus monkey, Rhesus monkey, Gorilla, Chinese hamster, Common marmoset, Orangutan  |
| 免疫原 | Synthetic peptide: ERFGSRNGKTSKK from an internal region of the human Cyclophilin A protein sequence according to NP_066953.1; NP_982254.1; NP_982255.1. Run BLAST with Run BLAST with |
| 阳性对照 | Human lymph node, tonsil and thymus lysates. Lysates prepared from transfected HEK293 cells transiently expressing Cyclophilin A. |

性能

| | |
|-------------|---|
| 形式 | Liquid |
| 存放说明 | Shipped at 4°C. Upon delivery aliquot and store at -20°C. Avoid freeze / thaw cycles. |
| 存储溶液 | Preservative: 0.02% Sodium Azide Constituents: 0.5% BSA, Tris buffered saline, pH 7.3 |
| 纯度 | Immunogen affinity purified |
| 纯化说明 | Purified from goat serum by ammonium sulphate precipitation followed by antigen affinity chromatography using the immunizing peptide. |
| 克隆 | 多克隆 |
| 同种型 | IgG |

应用

Our [Abpromise guarantee](#) covers the use of **ab77188** in the following tested applications.

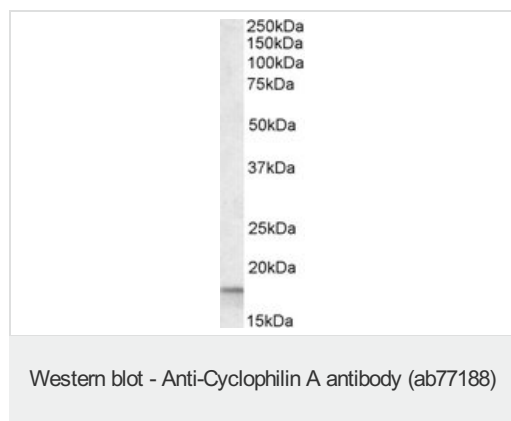
The application notes include recommended starting dilutions; optimal dilutions/concentrations should be determined by the end user.

| 应用 | Ab评论 | 说明 |
|----|------|--|
| WB | | Use a concentration of 0.1 - 0.3 µg/ml. Detects a band of approximately 18 kDa (predicted molecular weight: 18 kDa). |

靶标

| | |
|-------|---|
| 功能 | PPases accelerate the folding of proteins. It catalyzes the cis-trans isomerization of proline imidic peptide bonds in oligopeptides. |
| 序列相似性 | Belongs to the cyclophilin-type PPase family, PPase A subfamily. Contains 1 PPase cyclophilin-type domain. |
| 细胞定位 | Cytoplasm. |

图片



Anti-Cyclophilin A antibody (ab77188) at 0.1 µg/ml + Human Lymph node lysate (RIPA buffer) at 35 µg

Predicted band size: 18 kDa

Observed band size: 18 kDa

Primary incubation was 1 hour. Detected by chemiluminescence.

Please note: All products are "FOR RESEARCH USE ONLY AND ARE NOT INTENDED FOR DIAGNOSTIC OR THERAPEUTIC USE"

Our Abpromise to you: Quality guaranteed and expert technical support

- Replacement or refund for products not performing as stated on the datasheet
- Valid for 12 months from date of delivery
- Response to your inquiry within 24 hours
- We provide support in Chinese, English, French, German, Japanese and Spanish
- Extensive multi-media technical resources to help you
- We investigate all quality concerns to ensure our products perform to the highest standards

If the product does not perform as described on this datasheet, we will offer a refund or replacement. For full details of the Abpromise, please visit <http://www.abcam.cn/abpromise> or contact our technical team.

Terms and conditions

- Guarantee only valid for products bought direct from Abcam or one of our authorized distributors