

## Product datasheet

# Anti-CrkL antibody [Y244] ab32018

**重组** RabMAb

1 References 2 图像

### 概述

<b>产品名称</b>	Anti-CrkL抗体[Y244]
<b>描述</b>	兔单克隆抗体[Y244] to CrkL
<b>特异性</b>	ab32018 recognises CrkL (Crk-like)protein.
<b>经测试应用</b>	<b>适用于:</b> WB, IHC-P, ICC, IP
<b>种属反应性</b>	<b>与反应:</b> Human
<b>免疫原</b>	Synthetic peptide corresponding to residues in the second SH3 domain and near C terminus of human Crk like protein
<b>阳性对照</b>	K562 cell lysate, human metastatic lung carcinoma
<b>常规说明</b>	This product is a recombinant rabbit monoclonal antibody.
	<p>Mouse, Rat: We have preliminary internal testing data to indicate this antibody may not react with these species. Please contact us for more information.</p> <p>Our RabMAb<sup>®</sup> technology is a patented hybridoma-based technology for making rabbit monoclonal antibodies. For details on our patents, please refer to <a href="#">RabMAb<sup>®</sup> patents</a></p>

### 性能

<b>形式</b>	Liquid
<b>存放说明</b>	Shipped at 4°C. Upon delivery aliquot and store at -20°C. Avoid freeze / thaw cycles.
<b>存储溶液</b>	PBS 49%,Sodium azide 0.01%,Glycerol 50%,BSA 0.05%
<b>纯度</b>	IgG fraction
<b>克隆</b>	单克隆
<b>克隆编号</b>	Y244
<b>同种型</b>	IgG

### 应用

Our [Abpromise guarantee](#) covers the use of **ab32018** in the following tested applications.

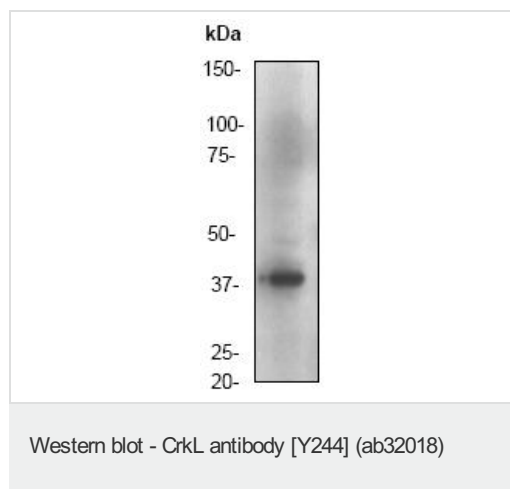
The application notes include recommended starting dilutions; optimal dilutions/concentrations should be determined by the end user.

应用	Ab评论	说明
WB		1/500. Detects a band of approximately 36 kDa (predicted molecular weight: 33 kDa).
IHC-P		Use at an assay dependent concentration.
ICC		1/50.
IP		1/10.

## 靶标

功能	May mediate the transduction of intracellular signals.
序列相似性	Belongs to the CRK family. Contains 1 SH2 domain. Contains 2 SH3 domains.

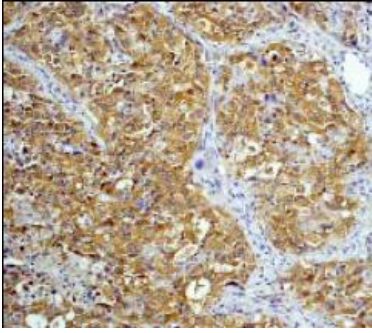
## 图片



Anti-CrkL antibody [Y244] (ab32018) at 1/500 dilution + K562 cell lysate

**Predicted band size : 33 kDa**

**Observed band size : 37 kDa**



ab32018, at a 1/50 dilution, staining human Crk in metastatic lung carcinoma by Immunohistochemistry, in paraffin embedded tissue

Immunohistochemistry (Formalin/PFA-fixed paraffin-embedded sections) - Anti-CrkL antibody [Y244] (ab32018)

**Please note:** All products are "FOR RESEARCH USE ONLY AND ARE NOT INTENDED FOR DIAGNOSTIC OR THERAPEUTIC USE"

### **Our Abpromise to you: Quality guaranteed and expert technical support**

- Replacement or refund for products not performing as stated on the datasheet
- Valid for 12 months from date of delivery
- Response to your inquiry within 24 hours
- We provide support in Chinese, English, French, German, Japanese and Spanish
- Extensive multi-media technical resources to help you
- We investigate all quality concerns to ensure our products perform to the highest standards

If the product does not perform as described on this datasheet, we will offer a refund or replacement. For full details of the Abpromise, please visit <http://www.abcam.cn/abpromise> or contact our technical team.

### **Terms and conditions**

- Guarantee only valid for products bought direct from Abcam or one of our authorized distributors