

Product datasheet

Anti-Cripto1 antibody [mAbcam60626] ab60626

1 图像

概述

产品名称	Anti-Cripto1抗体[mAbcam60626]
描述	小鼠单克隆抗体[mAbcam60626] to Cripto1
宿主	Mouse
经测试应用	适用于: WB
种属反应性	与反应: Human 预测可用于: Mouse, Cow
免疫原	Synthetic peptide conjugated to KLH derived from within residues 100 to the C-terminus of Human Cripto1. 参阅Abcam的专有抗源政策(Peptide available as ab23310 .)
阳性对照	This antibody gave a positive signal in Cripto1 (Human) Recombinant Protein.
常规说明	This antibody clone is manufactured by Abcam. If you require this antibody in a particular buffer formulation or a particular conjugate for your experiments, please contact orders@abcam.com or you can find further information here .

性能

形式	Liquid
存放说明	Shipped at 4°C. Store at +4°C short term (1-2 weeks). Upon delivery aliquot. Store at -20°C or -80°C. Avoid freeze / thaw cycle.
存储溶液	Preservative: 0.02% Sodium Azide Constituents: PBS, pH 7.4
纯度	IgG fraction
克隆	单克隆
克隆编号	mAbcam60626
骨髓瘤	Sp2/0-Ag14
同种型	IgG2a

应用

Our [Abpromise guarantee](#) covers the use of **ab60626** in the following tested applications.

The application notes include recommended starting dilutions; optimal dilutions/concentrations should be determined by the end user.

应用	Ab评论	说明
----	------	----

WB

应用说明

WB: Use at a concentration of 10 µg/ml. Detects a band of approximately 21 kDa using a Cripto1 Recombinant Protein (predicted molecular weight: 16-20 kDa).

Not yet tested in other applications.

Optimal dilutions/concentrations should be determined by the end user.

靶标

功能

Could play a role in the determination of the epiblastic cells that subsequently give rise to the mesoderm.

组织特异性

Preferentially expressed in gastric and colorectal carcinomas than in their normal counterparts.

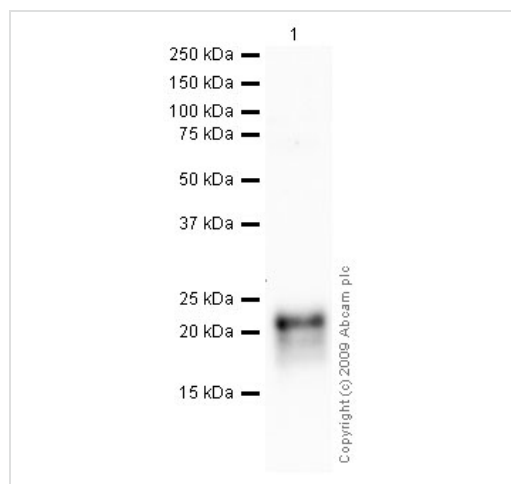
序列相似性

Contains 1 EGF-like domain.

细胞定位

Cell membrane.

图片



Western blot - Anti-Cripto1 antibody [mAbcam60626] (ab60626)

Anti-Cripto1 antibody [mAbcam60626] (ab60626) at 10 µg/ml + Cripto1 Recombinant Protein at 0.1 µg

Secondary

Goat polyclonal to Mouse IgG - H&L - Pre-Adsorbed (HRP) at 1/3000 dilution

Performed under reducing conditions.

Predicted band size: 16-20 kDa

Observed band size: 21 kDa

Please note: All products are "FOR RESEARCH USE ONLY AND ARE NOT INTENDED FOR DIAGNOSTIC OR THERAPEUTIC USE"

Our Abpromise to you: Quality guaranteed and expert technical support

- Replacement or refund for products not performing as stated on the datasheet
- Valid for 12 months from date of delivery
- Response to your inquiry within 24 hours

- We provide support in Chinese, English, French, German, Japanese and Spanish
- Extensive multi-media technical resources to help you
- We investigate all quality concerns to ensure our products perform to the highest standards

If the product does not perform as described on this datasheet, we will offer a refund or replacement. For full details of the Abpromise, please visit <http://www.abcam.cn/abpromise> or contact our technical team.

Terms and conditions

- Guarantee only valid for products bought direct from Abcam or one of our authorized distributors