

Product datasheet

Anti-Cre recombinase antibody [7.23] ab24607

★★★★☆ 7 Abreviews 12 References 1 图像

概述

产品名称	Anti-Cre recombinase抗体[7.23]
描述	小鼠单克隆抗体[7.23] to Cre recombinase
特异性	Current Batch not validated for Immunohistochemistry.
经测试应用	适用于: WB
免疫原	Full length native protein (affinity purified).
常规说明	This antibody can be used to determine the success of gene manipulations in transgenic animals.

性能

形式	Liquid
存放说明	Shipped at 4°C. Upon delivery aliquot and store at -20°C. Avoid freeze / thaw cycles.
存储溶液	Preservative: 0.03% Thimerosal (merthiolate) Constituents: PBS, 50% Glycerol
纯度	Protein G purified
Primary antibody说明	This antibody can be used to determine the success of gene manipulations in transgenic animals.
克隆	单克隆
克隆编号	7.23
同种型	IgG1

应用

Our [Abpromise guarantee](#) covers the use of **ab24607** in the following tested applications.

The application notes include recommended starting dilutions; optimal dilutions/concentrations should be determined by the end user.

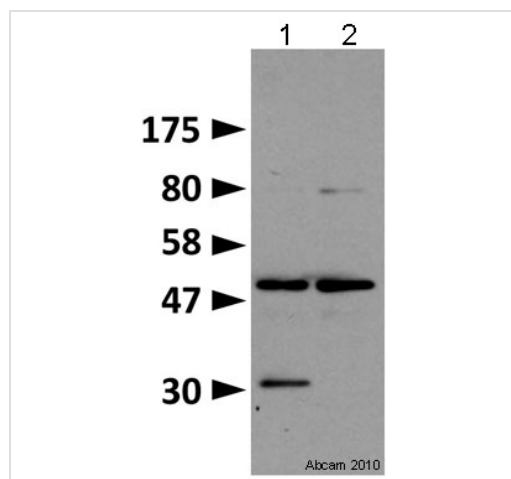
应用	Ab评论	说明
WB	★★★★☆	1/500. Detects a band of approximately 34 kDa (predicted molecular weight: 38 kDa).

靶标

相关性

Cre-recombinase is a 38 kDa DNA recombinase derived from the P1 bacteriophage. It is highly specific for a 34 bp DNA sequence (loxP) found in P1 DNA. It catalyzes site-specific recombination between two 34-base-pair LOXP sites. Its role is to maintain the phage genome as a monomeric unit-copy plasmid in the lysogenic state. It is homotetramer when bound to DNA and belongs to the "phage" integrase family.

图片



Western blot - Anti-Cre recombinase antibody [7.23] (ab24607)

This image is courtesy of Britta Eickholt, Univ London Kings Coll, United Kingdom

All lanes : Anti-Cre recombinase antibody [7.23] (ab24607) at 1/1000 dilution

Lane 1 : Escherichia coli expressing Cre-recombinase

Lane 2 : Hek cell expressing control plasmid

Lysates/proteins at 10 µg per lane.

Secondary

goat anti-mouse HRP conjugated at 1/3000 dilution

Developed using the ECL technique

Performed under reducing conditions.

Predicted band size : 38 kDa

Observed band size : 34 kDa

Additional bands at : 50&80 kDa. We are unsure as to the identity of these extra bands.

Exposure time : 1 minute

This image is courtesy of Britta Eickholt, Univ London Kings Coll, United Kingdom

Please note: All products are "FOR RESEARCH USE ONLY AND ARE NOT INTENDED FOR DIAGNOSTIC OR THERAPEUTIC USE"

Our Abpromise to you: Quality guaranteed and expert technical support

- Replacement or refund for products not performing as stated on the datasheet
- Valid for 12 months from date of delivery
- Response to your inquiry within 24 hours

- We provide support in Chinese, English, French, German, Japanese and Spanish
- Extensive multi-media technical resources to help you
- We investigate all quality concerns to ensure our products perform to the highest standards

If the product does not perform as described on this datasheet, we will offer a refund or replacement. For full details of the Abpromise, please visit <http://www.abcam.cn/abpromise> or contact our technical team.

Terms and conditions

- Guarantee only valid for products bought direct from Abcam or one of our authorized distributors