

Product datasheet

# Anti-Cortisol Binding Globulin antibody ab113442

1 图像

概述

产品名称	Anti-Cortisol Binding Globulin抗体
描述	山羊多克隆抗体to Cortisol Binding Globulin
宿主	Goat
经测试应用	适用于: WB
种属反应性	与反应: Rat
免疫原	Synthetic peptide: KASQQINQHVKDKT by a Cysteine residue linker, corresponding to internal sequence amino acids 157-170 of Rat Cortisol Binding Globulin (NP_001009663.1) <a href="#">Run BLAST with</a> <a href="#">Run BLAST with</a>
阳性对照	Rat Liver lysate

性能

形式	Liquid
存放说明	Shipped at 4°C. Upon delivery aliquot and store at -20°C. Avoid freeze / thaw cycles.
存储溶液	pH: 7.30 Preservative: 0.02% Sodium azide Constituents: 99% Tris buffered saline, 0.5% BSA
纯度	Immunogen affinity purified
纯化说明	Purified from goat serum by ammonium sulphate precipitation followed by antigen affinity chromatography using the immunizing peptide.
克隆	多克隆
同种型	IgG

应用

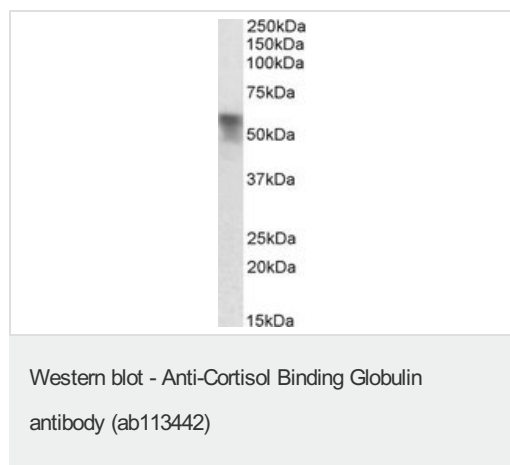
Our [Abpromise guarantee](#) covers the use of **ab113442** in the following tested applications.  
The application notes include recommended starting dilutions; optimal dilutions/concentrations should be determined by the end user.

应用	Ab评论	说明
WB		Use a concentration of 0.03 - 0.1 µg/ml. Detects a band of approximately 55 kDa (predicted molecular weight: 45 kDa).

## 靶标

功能	Major transport protein for glucocorticoids and progestins in the blood of almost all vertebrate species.
组织特异性	Plasma; synthesized in liver. Has also been identified in a number of glucocorticoid responsive cells.
疾病相关	Defects in SERPINA6 are a cause of corticosteroid-binding globulin deficiency (CBG deficiency) [MIM:611489]. CBG deficiency is an extremely rare hereditary disorder characterized by reduced corticosteroid-binding capacity with normal or low plasma corticosteroid-binding globulin concentration, and normal or low basal cortisol levels associated with hypo/hypertension and muscle fatigue.
序列相似性	Belongs to the serpin family.
翻译后修饰	N-glycosylated; binds 5 oligosaccharide chains. Glycosylation in position Asn-260 is needed for steroid binding.
细胞定位	Secreted.

## 图片



Anti-Cortisol Binding Globulin antibody (ab113442) at 0.03 µg/ml + Rat Liver lysate (in RIPA buffer) at 35 µg

Developed using the ECL technique.

**Predicted band size: 45 kDa**

**Please note:** All products are "FOR RESEARCH USE ONLY AND ARE NOT INTENDED FOR DIAGNOSTIC OR THERAPEUTIC USE"

## Our Abpromise to you: Quality guaranteed and expert technical support

- Replacement or refund for products not performing as stated on the datasheet
- Valid for 12 months from date of delivery
- Response to your inquiry within 24 hours

- We provide support in Chinese, English, French, German, Japanese and Spanish
- Extensive multi-media technical resources to help you
- We investigate all quality concerns to ensure our products perform to the highest standards

If the product does not perform as described on this datasheet, we will offer a refund or replacement. For full details of the Abpromise, please visit <http://www.abcam.cn/abpromise> or contact our technical team.

### **Terms and conditions**

---

- Guarantee only valid for products bought direct from Abcam or one of our authorized distributors