

## Product datasheet

# Anti-Connexin 37 / GJA4 antibody ab58918

3 References 2 图像

### 概述

产品名称	Anti-Connexin 37 / GJA4抗体
描述	兔多克隆抗体to Connexin 37 / GJA4
宿主	Rabbit
经测试应用	适用于: IP, ELISA, WB
种属反应性	与反应: Mouse 预测可用于: Rat, Sheep, Rabbit, Horse, Guinea pig, Cow, Cat, Dog, Pig
免疫原	a region within synthetic peptide: SHIRYWVLQF LRVSTPTLIY LGHVYLSRR EERLRQKEGE LRALPSKDLH, corresponding to N terminal amino acids 73-122 of Mouse Connexin 37/ GJA4 <a href="#">Run BLAST with ExPASy</a> <a href="#">Run BLAST with NCBI</a>
阳性对照	NIH/3T3 membrane lysate

### 性能

形式	Liquid
存放说明	Shipped at 4°C. Upon delivery aliquot and store at -20°C. Avoid freeze / thaw cycles.
存储溶液	Preservative: None Constituents: 2% Sucrose, PBS
纯度	Protein A purified
克隆	多克隆
同种型	IgG

### 应用

Our [Abpromise guarantee](#) covers the use of **ab58918** in the following tested applications.

The application notes include recommended starting dilutions; optimal dilutions/concentrations should be determined by the end user.

应用	Ab 评论	说明
IP		Use a concentration of 5 µg/ml.

应用	Ab 评论	说明
----	----------	----

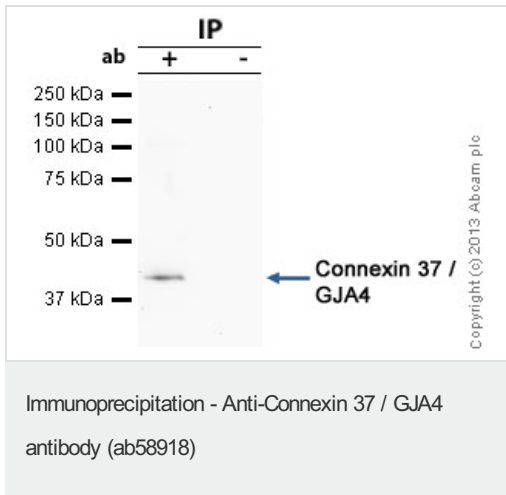
ELISA      Use at an assay dependent concentration.  
Titre using peptide based assay, 1:312500.

WB      Use a concentration of 5 - 10 µg/ml. Detects a band of approximately 45 kDa (predicted molecular weight: 37 kDa).  
Good results were obtained when blocked with 5% non-fat dry milk in 0.05% PBS-T.

## 靶标

<b>功能</b>	One gap junction consists of a cluster of closely packed pairs of transmembrane channels, the connexons, through which materials of low MW diffuse from one cell to a neighboring cell.
<b>组织特异性</b>	Expressed in multiple organs and tissues, including heart, uterus, ovary, and blood vessel endothelium.
<b>序列相似性</b>	Belongs to the connexin family. Alpha-type (group II) subfamily.
<b>细胞定位</b>	Cell membrane. Cell junction > gap junction.

## 图片



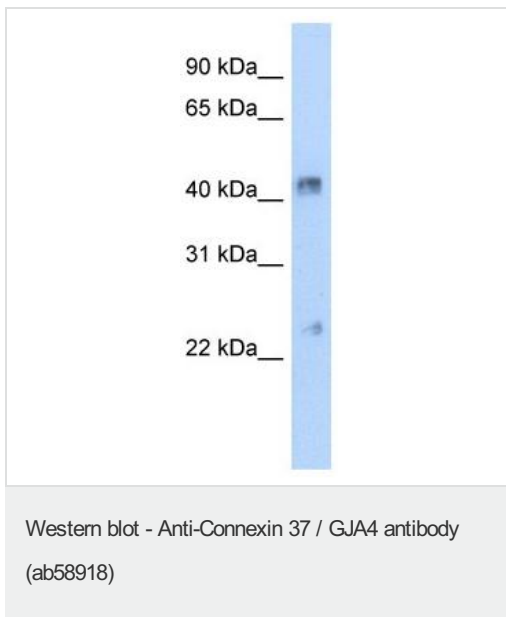
Connexin 37 / GJA4 was immunoprecipitated using 0.5mg NIH3T3 whole cell extract, 5µg of Rabbit polyclonal to Connexin 37 / GJA4 and 50µl of protein G magnetic beads (+). No antibody was added to the control (-).

The antibody was incubated under agitation with Protein G beads for 10min, NIH3T3 whole cell extract lysate diluted in RIPA buffer was added to each sample and incubated for a further 10min under agitation.

Proteins were eluted by addition of 40µl SDS loading buffer and incubated for 10min at 70°C; 10µl of each sample was separated on a SDS PAGE gel, transferred to a nitrocellulose membrane, blocked with 5% BSA and probed with ab58918.

Secondary: Mouse monoclonal [SB62a]  
Secondary Antibody to Rabbit IgG light chain (HRP) ([ab99697](#)).

Band: 45kDa; Connexin 37 / GJA4



Anti-Connexin 37 / GJA4 antibody (ab58918) at 10 µg/ml + NIH/3T3 cell lysate at 10 µg

**Secondary**

HRP conjugated anti-Rabbit IgG at 1/50000 dilution

**Predicted band size:** 37 kDa

**Observed band size:** 45 kDa

**Please note:** All products are "FOR RESEARCH USE ONLY AND ARE NOT INTENDED FOR DIAGNOSTIC OR THERAPEUTIC USE"

- Replacement or refund for products not performing as stated on the datasheet
- Valid for 12 months from date of delivery
- Response to your inquiry within 24 hours
  
- We provide support in Chinese, English, French, German, Japanese and Spanish
- Extensive multi-media technical resources to help you
- We investigate all quality concerns to ensure our products perform to the highest standards

If the product does not perform as described on this datasheet, we will offer a refund or replacement. For full details of the Abpromise, please visit <http://www.abcam.cn/abpromise> or contact our technical team.

### **Terms and conditions**

---

- Guarantee only valid for products bought direct from Abcam or one of our authorized distributors