


Product datasheet

Anti-Clavesin 1 + 2 antibody ab106557

1 图像

概述

产品名称	Anti-Clavesin 1 + 2抗体
描述	兔多克隆抗体to Clavesin 1 + 2
特异性	Specific for Clavesin 1/2 protein doublet in Western blots of Rat brain lysate. Isoform-specific knock down in cultured hippocampal neurons indicates that the lower and upper bands are Clavesin 1 and 2, respectively.
经测试应用	适用于: WB, ICC
种属反应性	与反应: Rat 预测可用于: Mouse, Human 
免疫原	Synthetic peptide from the C terminus of Rat Clavesin 1.
阳性对照	Rat hippocampal homogenate; Rat brain lysate

性能

形式	Liquid
存放说明	Shipped at 4°C. Store at -20°C. Stable for 12 months at -20°C.
存储溶液	Preservative: None Constituents: 50% Glycerol, PBS
纯度	Protein A purified
克隆	多克隆
同种型	IgG

应用

Our [Abpromise guarantee](#) covers the use of **ab106557** in the following tested applications.

The application notes include recommended starting dilutions; optimal dilutions/concentrations should be determined by the end user.

应用	Ab评论	说明
WB		1/1000. Predicted molecular weight: 41 kDa.
ICC		1/50.

靶标

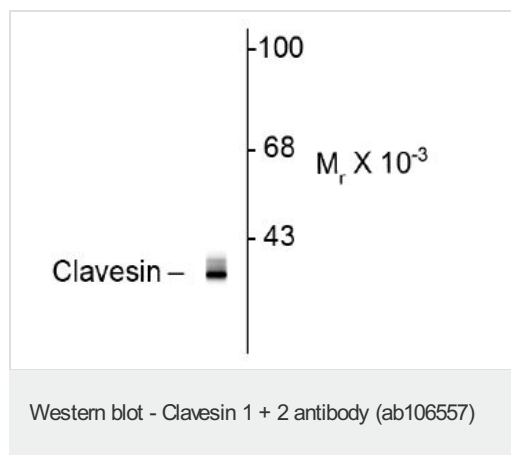
相关性

Clavesin (clathrin vesicle associated Sec14 protein) is a novel neuron specific protein that has recently been identified and shown to be required for normal morphology of late endosomes and/or lysosomes as lentiviral-mediated knockdown of clavesin in hippocampal neurons causes lysosomal defects (Katoh et al., 2009). Additionally, upregulation of clavesin in human hepatocellular carcinoma has recently been demonstrated thus making it a useful marker for this disease state (Zhao et al., 2008).

细胞定位

Golgi Apparatus, Cytoplasmic vesicle, Endosome, Membrane.

图片



Anti-Clavesin 1 + 2 antibody (ab106557) at
1/1000 dilution + Rat hippocampal
homogenate

Predicted band size : 41 kDa

Please note: All products are "FOR RESEARCH USE ONLY AND ARE NOT INTENDED FOR DIAGNOSTIC OR THERAPEUTIC USE"

Our Abpromise to you: Quality guaranteed and expert technical support

- Replacement or refund for products not performing as stated on the datasheet
- Valid for 12 months from date of delivery
- Response to your inquiry within 24 hours
- We provide support in Chinese, English, French, German, Japanese and Spanish
- Extensive multi-media technical resources to help you
- We investigate all quality concerns to ensure our products perform to the highest standards

If the product does not perform as described on this datasheet, we will offer a refund or replacement. For full details of the Abpromise, please visit <http://www.abcam.cn/abpromise> or contact our technical team.

Terms and conditions

- Guarantee only valid for products bought direct from Abcam or one of our authorized distributors