

Product datasheet

Anti-Clathrin heavy chain antibody [TD.1] ab24578

5 References 1 图像

概述

产品名称	Anti-Clathrin heavy chain抗体[TD.1]
描述	小鼠单克隆抗体[TD.1] to Clathrin heavy chain
特异性	This antibody reacts with clathrin heavy chains (CHC).
经测试应用	适用于: IHC-P, WB, ICC/IF 不适用于: IP
种属反应性	与反应: Cow, Human
免疫原	This antibody was raised using the globular N terminal domain of clathrin heavy chain.
阳性对照	Methanol fixed HeLa cells for IF.

性能

形式	Liquid
存放说明	Shipped at 4°C. Upon delivery aliquot and store at -20°C. Avoid freeze / thaw cycles.
存储溶液	Preservative: 0.03% Thimerosal (merthiolate). Constituents: PBS.
纯度	Protein G purified
克隆	单克隆
克隆编号	TD.1
同种型	IgG1

应用

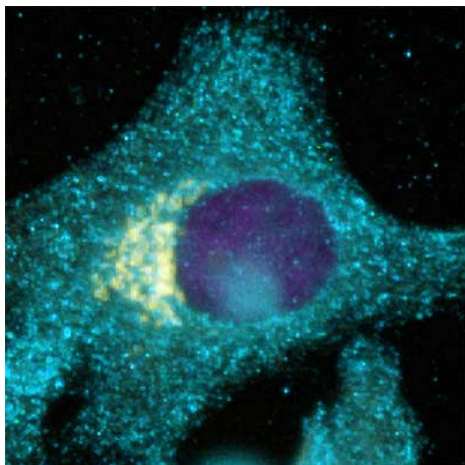
Our [Abpromise guarantee](#) covers the use of **ab24578** in the following tested applications.

The application notes include recommended starting dilutions; optimal dilutions/concentrations should be determined by the end user.

应用	Ab评论	说明
IHC-P		Use at an assay dependent concentration. PubMed: 21571834
WB		1/250. Predicted molecular weight: 192 kDa.

应用	Ab评论	说明
ICC/IF		Use at an assay dependent concentration.
应用说明		Is unsuitable for IP.
靶标		
功能		Clathrin is the major protein of the polyhedral coat of coated pits and vesicles. Two different adapter protein complexes link the clathrin lattice either to the plasma membrane or to the trans-Golgi network.
序列相似性		Belongs to the clathrin heavy chain family.
细胞定位		Cytoplasmic vesicle membrane. Membrane > coated pit. Melanosome. Cytoplasmic face of coated pits and vesicles. Identified by mass spectrometry in melanosome fractions from stage I to stage IV.

图片



ab24578 at a 1/200 dilution staining clathrin triskelion (blue) throughout the methanol fixed HeLa cells by Immunocytochemistry/Immunofluorescence. The Golgi is brilliantly stained by Giantin (yellow). Secondary antibodies used were a goat anti-mouse alexafluor AF546 and a goat anti-rabbit alexafluor AF488 applied at 1 ug/mL. The DNA was visualized with DAPI at 1 ug/mL. The colors of this image were altered.

Immunocytochemistry/ Immunofluorescence - Clathrin heavy chain antibody [TD.1] (ab24578)

Please note: All products are "FOR RESEARCH USE ONLY AND ARE NOT INTENDED FOR DIAGNOSTIC OR THERAPEUTIC USE"

Our Abpromise to you: Quality guaranteed and expert technical support

- Replacement or refund for products not performing as stated on the datasheet
- Valid for 12 months from date of delivery
- Response to your inquiry within 24 hours
- We provide support in Chinese, English, French, German, Japanese and Spanish
- Extensive multi-media technical resources to help you
- We investigate all quality concerns to ensure our products perform to the highest standards

If the product does not perform as described on this datasheet, we will offer a refund or replacement. For full details of the Abpromise, please visit <http://www.abcam.cn/abpromise> or contact our technical team.

Terms and conditions

- Guarantee only valid for products bought direct from Abcam or one of our authorized distributors