

Product datasheet

Anti-Choline kinase alpha antibody ab88053

★★★★★ 3 Abreviews 5 References 5 图像

概述

产品名称	Anti-Choline kinase alpha抗体
描述	兔多克隆抗体to Choline kinase alpha
宿主	Rabbit
经测试应用	适用于: WB, ICC/IF
种属反应性	与反应: Mouse, Rat, Human 预测可用于: Zebrafish
免疫原	Synthetic peptide conjugated to KLH derived from within residues 400 to the C-terminus of Human Choline kinase alpha.参阅Abcam的专有抗源政策(Peptide available as ab98290 .)
阳性对照	This antibody gave a positive signal in the following lysates: Human Breast Tissue; Mouse Lung Tissue; Mouse Brain Tissue; Rat Brain Tissue; MCF7 Whole Cell; HepG2 Whole Cell; HeLa Whole Cell; Jurkat Whole Cell; A549, Human Glioblastoma Whole Cell.

性能

形式	Liquid
存放说明	Shipped at 4°C. Store at +4°C short term (1-2 weeks). Upon delivery aliquot. Store at -20°C or -80°C. Avoid freeze / thaw cycle.
存储溶液	Preservative: 0.02% Sodium Azide Constituents: 1% BSA, PBS, pH 7.4
纯度	Immunogen affinity purified
克隆	多克隆
同种型	IgG

应用

Our [Abpromise guarantee](#) covers the use of **ab88053** in the following tested applications.

The application notes include recommended starting dilutions; optimal dilutions/concentrations should be determined by the end user.

应用	Ab评论	说明
WB	★★★★★	Use a concentration of 1 µg/ml. Detects a band of approximately 52 kDa (predicted molecular weight: 52 kDa).

应用	Ab评论	说明
----	------	----

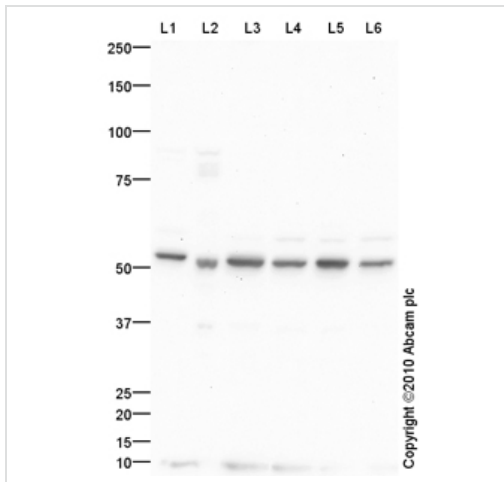
ICC/IF ★★★★★ Use a concentration of 5 µg/ml.

靶标

相关性 The dominant pathway for biosynthesis of phosphatidylcholine occurs through the CDP-choline pathway. Choline kinase alpha (CHK) is the first enzyme in the pathway and may thereby play an upstream regulatory role in lipid transport and metabolism. CHK additionally catalyzes phosphorylation of ethanolamine.

细胞定位 Cytoplasmic

图片



Western blot - Anti-Choline kinase alpha antibody (ab88053)

All lanes : Anti-Choline kinase alpha antibody (ab88053) at 1 µg/ml

Lane 1 : MCF7 (Human breast adenocarcinoma cell line) Whole Cell Lysate

Lane 2 : Human breast tissue lysate - total protein (ab30090)

Lane 3 : HepG2 (Human hepatocellular liver carcinoma cell line) Whole Cell Lysate

Lane 4 : HeLa (Human epithelial carcinoma cell line) Whole Cell Lysate

Lane 5 : Jurkat (Human T cell lymphoblast-like cell line) Whole Cell Lysate

Lane 6 : A549 (Human lung adenocarcinoma epithelial cell line) Whole Cell Lysate

Lysates/proteins at 10 µg per lane.

Secondary

All lanes : Goat polyclonal to Rabbit IgG - H&L - Pre-Adsorbed (HRP) at 1/3000 dilution

Developed using the ECL technique.

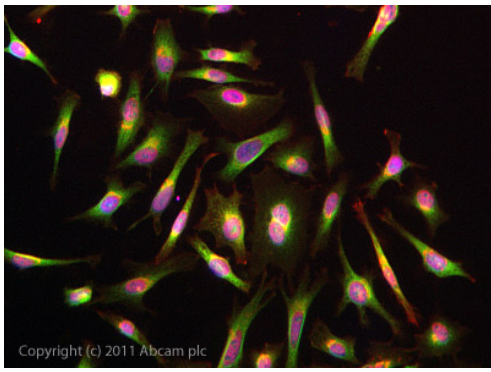
Performed under reducing conditions.

Predicted band size: 52 kDa

Observed band size: 52 kDa

Additional bands at: 58 kDa. We are unsure as to the identity of these extra bands.

Exposure time: 2 minutes



Immunocytochemistry/ Immunofluorescence - Anti-Choline kinase alpha antibody (ab88053)

ICC/IF image of ab88053 stained HeLa cells. The cells were 4% PFA fixed (10 min) and then incubated in 1%BSA / 10% normal goat serum / 0.3M glycine in 0.1% PBS-Tween for 1h to permeabilise the cells and block non-specific protein-protein interactions. The cells were then incubated with the antibody (ab88053, 5µg/ml) overnight at +4°C. The secondary antibody (green) was [ab96899](#) Dylight 488 goat anti-rabbit IgG (H+L) used at a 1/250 dilution for 1h. Alexa Fluor® 594 WGA was used to label plasma membranes (red) at a 1/200 dilution for 1h. DAPI was used to stain the cell nuclei (blue) at a concentration of 1.43µM.



Western blot - Anti-Choline kinase alpha antibody (ab88053)

All lanes : Anti-Choline kinase alpha antibody (ab88053) at 1 µg/ml

Lane 1 : Brain (Mouse) Tissue Lysate

Lane 2 : Mouse lung normal tissue lysate - total protein ([ab29297](#))

Lane 3 : Brain (Rat) Tissue Lysate

Lysates/proteins at 10 µg per lane.

Secondary

All lanes : Goat Anti-Rabbit IgG H&L (HRP) preadsorbed ([ab97080](#)) at 1/5000 dilution

Developed using the ECL technique.

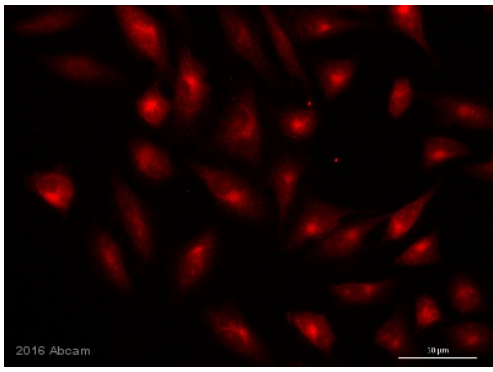
Performed under reducing conditions.

Predicted band size: 52 kDa

Observed band size: 52 kDa

Additional bands at: 72 kDa, 78 kDa. We are unsure as to the identity of these extra bands.

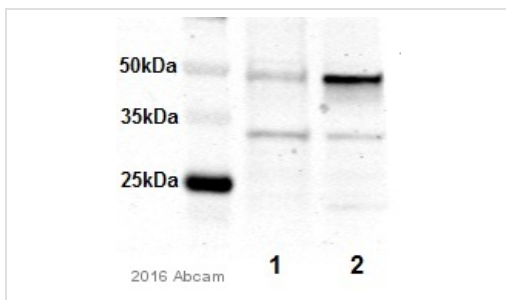
Exposure time: 1 minute



Immunocytochemistry/ Immunofluorescence - Anti-Choline kinase alpha antibody (ab88053)

This image is courtesy of an anonymous abreview.

Immunocytochemistry/ Immunofluorescence analysis of human glioblastoma cells labeling Choline kinase alpha with ab88053 at 1/250 dilution. Cells were fixed in paraformaldehyde and permeabilized with TritonX-100. A goat anti-rabbit Alexa Fluor594 was used as the secondary antibody at 1/1000 dilution.



Western blot - Anti-Choline kinase alpha antibody (ab88053)

This image is courtesy of an anonymous Abreview

All lanes : Anti-Choline kinase alpha antibody (ab88053) at 1/1000 dilution

Lane 1 : Choline kinase alpha knockdown Human Glioblastoma whole cell lysate

Lane 2 : Human Glioblastoma (Control) whole cell lysate

Lysates/proteins at 50 μg per lane.

Secondary

All lanes : goat-anti-rabbit IRDye800CW at 1/10000 dilution

Performed under reducing conditions.

Predicted band size: 52 kDa

Exposure time: 1 minute

Please note: All products are "FOR RESEARCH USE ONLY AND ARE NOT INTENDED FOR DIAGNOSTIC OR THERAPEUTIC USE"

Our Abpromise to you: Quality guaranteed and expert technical support

- Replacement or refund for products not performing as stated on the datasheet
- Valid for 12 months from date of delivery
- Response to your inquiry within 24 hours
- We provide support in Chinese, English, French, German, Japanese and Spanish
- Extensive multi-media technical resources to help you

- We investigate all quality concerns to ensure our products perform to the highest standards

If the product does not perform as described on this datasheet, we will offer a refund or replacement. For full details of the Abpromise, please visit <http://www.abcam.cn/abpromise> or contact our technical team.

Terms and conditions

- Guarantee only valid for products bought direct from Abcam or one of our authorized distributors