

## Product datasheet

# Anti-Chk1 antibody ab2845

★★★★★ 1 Abreviews 7 References 2 图像

### 概述

产品名称	Anti-Chk1抗体
描述	山羊多克隆抗体to Chk1
宿主	Goat
经测试应用	适用于: WB
种属反应性	与反应: Rat, Human 预测可用于: Dog, Pig, Chimpanzee, Rhesus monkey, Gorilla, Orangutan
免疫原	Synthetic phospho peptide (Human), which represents a portion of human Chk 1 encoded within exon 8.
阳性对照	HeLa whole cell lysate.

### 性能

形式	Liquid
存放说明	Shipped at 4°C. Upon delivery aliquot and store at -20°C. Avoid freeze / thaw cycles.
存储溶液	Preservative: 0.1% Sodium Azide Constituents: 8mM PBS, 60mM Citrate, 150mM Tris, pH 7-8
纯度	Immunogen affinity purified
克隆	多克隆
同种型	IgG

### 应用

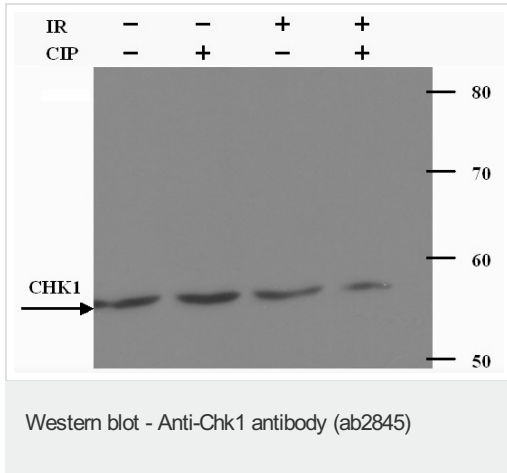
Our [Abpromise guarantee](#) covers the use of **ab2845** in the following tested applications.

The application notes include recommended starting dilutions; optimal dilutions/concentrations should be determined by the end user.

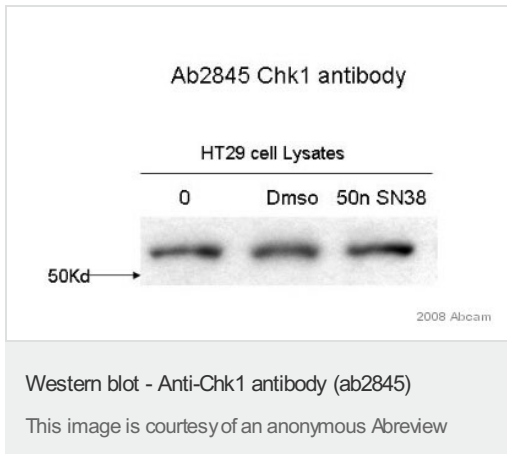
应用	Ab评论	说明
WB	★★★★★	1/2500 - 1/15000. Detects a band of approximately 54 kDa (predicted molecular weight: 54 kDa).

### 标签

图片



ab2845 at a 1:10000 dilution staining ~57 kDa Chk 1 in HeLa whole cell lysate (30µg / lane, +/- 10 Gy IR, +/- calf intestinal phosphatase treatment (CIP)) by Western blot (ECL, 30 seconds exposure). ab2845 at a 1:10000 dilution staining ~57 kDa Chk 1 in HeLa whole cell lysate (30µg / lane, +/- 10 Gy IR, +/- calf intestinal phosphatase treatment (CIP)) by Western blot (ECL, 30 seconds exposure).



**All lanes :** Anti-Chk1 antibody (ab2845) at 1/10000 dilution

**Lane 1 :** Whole cell lysate of HT29 tumour cell line, untreated

**Lane 2 :** Whole cell lysate of HT29 tumour cell line, treated with DMSO

**Lane 3 :** Whole cell lysate of HT29 tumour cell line, treated with 50nM SN38 for 6h

Lysates/proteins at 50 µg per lane.

**Secondary**

**All lanes :** HRP conjugated cow anti-goat antibody at 1/10000 dilution

Developed using the ECL technique.

Performed under reducing conditions.

**Predicted band size:** 54 kDa

**Observed band size:** 55 kDa

**Exposure time:** 1 minute

**Please note:** All products are "FOR RESEARCH USE ONLY AND ARE NOT INTENDED FOR DIAGNOSTIC OR THERAPEUTIC USE"

## **Our Abpromise to you: Quality guaranteed and expert technical support**

---

- Replacement or refund for products not performing as stated on the datasheet
- Valid for 12 months from date of delivery
- Response to your inquiry within 24 hours
  
- We provide support in Chinese, English, French, German, Japanese and Spanish
- Extensive multi-media technical resources to help you
- We investigate all quality concerns to ensure our products perform to the highest standards

If the product does not perform as described on this datasheet, we will offer a refund or replacement. For full details of the Abpromise, please visit <http://www.abcam.cn/abpromise> or contact our technical team.

## **Terms and conditions**

---

- Guarantee only valid for products bought direct from Abcam or one of our authorized distributors