

Product datasheet

Anti-Cellubrevin antibody [2A2] ab81610

1 Abreviews 1 图像

概述

产品名称	Anti-Cellubrevin抗体[2A2]
描述	小鼠单克隆抗体[2A2] to Cellubrevin
宿主	Mouse
经测试应用	适用于: WB, ELISA
种属反应性	与反应: Mouse, Human 预测可用于: Rat, Cow, Xenopus laevis, Zebrafish, Cynomolgus monkey
免疫原	Recombinant fragment: MSTGPTAATG SNRRLQQTQN QVDEVVDIMR VNVDKVLERD QKLSELDDRA DALQAGA, corresponding to amino acids 1-77 of Human Cellubrevin purified from E. coli (NP_004772) Run BLAST with ExPASy Run BLAST with NCBI
阳性对照	Mouse lung extracts.
常规说明	Isotype: Mouse IgG2b heavy chain and kappa light chain

性能

形式	Liquid
存放说明	Shipped at 4°C. Store at +4°C short term (1-2 weeks). Upon delivery aliquot. Store at -20°C or -80°C. Avoid freeze / thaw cycle.
存储溶液	Preservative: 0.1% Sodium Azide Constituents: PBS, pH 7.4
克隆	单克隆
克隆编号	2A2
同种型	IgG2b
轻链类型	kappa

应用

Our [Abpromise guarantee](#) covers the use of **ab81610** in the following tested applications.

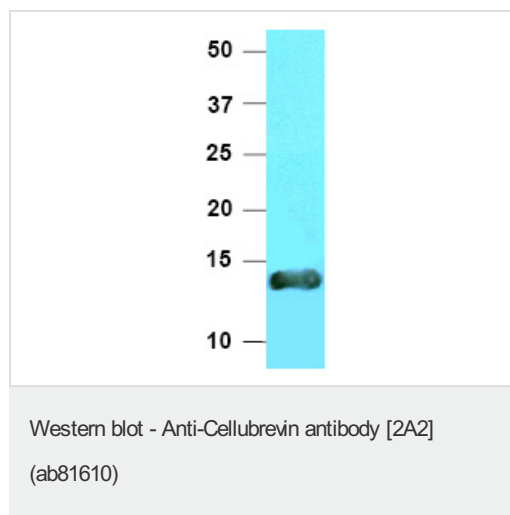
The application notes include recommended starting dilutions; optimal dilutions/concentrations should be determined by the end user.

应用	Ab评论	说明
WB		1/1000 - 1/2000. Detects a band of approximately 11 kDa (predicted molecular weight: 11 kDa).
ELISA		Use at an assay dependent dilution.

靶标

功能	SNARE involved in vesicular transport from the late endosomes to the trans-Golgi network.
序列相似性	Belongs to the synaptobrevin family. Contains 1 v-SNARE coiled-coil homology domain.
翻译后修饰	Phosphorylated upon DNA damage, probably by ATM or ATR.
细胞定位	Membrane. Cell junction > synapse > synaptosome.

图片



Anti-Cellubrevin antibody [2A2] (ab81610) at 1/1000 dilution + mouse lung extract at 40 µg

Secondary

goat anti-mouse HRP

Developed using the ECL technique.

Predicted band size: 11 kDa

Observed band size: 11 kDa

Please note: All products are "FOR RESEARCH USE ONLY AND ARE NOT INTENDED FOR DIAGNOSTIC OR THERAPEUTIC USE"

Our Abpromise to you: Quality guaranteed and expert technical support

- Replacement or refund for products not performing as stated on the datasheet
- Valid for 12 months from date of delivery
- Response to your inquiry within 24 hours
- We provide support in Chinese, English, French, German, Japanese and Spanish
- Extensive multi-media technical resources to help you
- We investigate all quality concerns to ensure our products perform to the highest standards

If the product does not perform as described on this datasheet, we will offer a refund or replacement. For full details of the Abpromise, please visit <http://www.abcam.cn/abpromise> or contact our technical team.

Terms and conditions

- Guarantee only valid for products bought direct from Abcam or one of our authorized distributors