


Product datasheet

Anti-Cdk8 antibody ab115155

1 图像

概述

产品名称	Anti-Cdk8抗体
描述	兔多克隆抗体to Cdk8
宿主	Rabbit
经测试应用	适用于: IP, IHC-P 不适用于: WB
种属反应性	与反应: Human 预测可用于: Mouse, Rabbit, Horse, Chicken, Cow, Dog, Turkey, Xenopus laevis, Chimpanzee, Rhesus monkey, Gorilla, Tilapia, Orangutan, Xenopus tropicalis, Medaka fish 
免疫原	Synthetic peptide, corresponding to a region within amino acids 370-420 of Human Cdk8 (P49336).
阳性对照	HeLa cell lysates.

性能

形式	Liquid
存放说明	Shipped at 4°C. Upon delivery aliquot and store at -20°C. Avoid freeze / thaw cycles.
存储溶液	Preservative: 0.09% Sodium azide Constituent: 99% Tris citrate/phosphate Note: pH 7 to 8
纯度	Immunogen affinity purified
纯化说明	Affinity purified using an epitope specific to CDK8 immobilized on solid support.
克隆	多克隆
同种型	IgG

应用

Our [Abpromise guarantee](#) covers the use of **ab115155** in the following tested applications.

The application notes include recommended starting dilutions; optimal dilutions/concentrations should be determined by the end user.

应用	Ab评论	说明
IP		Use at 2-5 µg/mg of lysate.
IHC-P		Use at an assay dependent concentration.
应用说明		Is unsuitable for WB.

靶标

功能

Component of the Mediator complex, a coactivator involved in regulated gene transcription of nearly all RNA polymerase II-dependent genes. Mediator functions as a bridge to convey information from gene-specific regulatory proteins to the basal RNA polymerase II transcription machinery. Mediator is recruited to promoters by direct interactions with regulatory proteins and serves as a scaffold for the assembly of a functional preinitiation complex with RNA polymerase II and the general transcription factors. Phosphorylates the CTD (C-terminal domain) of the large subunit of RNA polymerase II (RNAP II), which may inhibit the formation of a transcription initiation complex. Phosphorylates CCNH leading to down-regulation of the TFIIH complex and transcriptional repression. Recruited through interaction with MAML1 to hyperphosphorylate the intracellular domain of NOTCH, leading to its degradation.

序列相似性

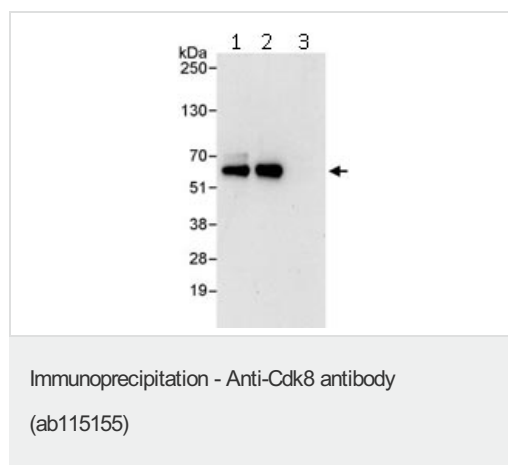
Belongs to the protein kinase superfamily. CMGC Ser/Thr protein kinase family. CDC2/CDKX subfamily.

Contains 1 protein kinase domain.

细胞定位

Nucleus.

图片



Immunoprecipitation of Cdk8 (3 µg of antibody per mg of HeLa cells lysate; 20% of the IP loaded). Lane 1- Immunoprecipitation with anti-Cdk8 antibody (ab115155); Lane 2- Immunoprecipitation with an anti-Cdk8 antibody that recognizes an upstream epitope; Lane 3- Immunoprecipitation with IgG control. An anti-Cdk8 antibody used in lane 2 was used at 0.4 µg/ml for western blot. Detection: Chemiluminescence with exposure time of 30 sec.

Please note: All products are "FOR RESEARCH USE ONLY AND ARE NOT INTENDED FOR DIAGNOSTIC OR THERAPEUTIC USE"

Our Abpromise to you: Quality guaranteed and expert technical support

- Replacement or refund for products not performing as stated on the datasheet
- Valid for 12 months from date of delivery

- Response to your inquiry within 24 hours
- We provide support in Chinese, English, French, German, Japanese and Spanish
- Extensive multi-media technical resources to help you
- We investigate all quality concerns to ensure our products perform to the highest standards

If the product does not perform as described on this datasheet, we will offer a refund or replacement. For full details of the Abpromise, please visit <http://www.abcam.cn/abpromise> or contact our technical team.

Terms and conditions

- Guarantee only valid for products bought direct from Abcam or one of our authorized distributors