

Product datasheet

Anti-Cdc27 antibody ab113361

3 图像

概述

产品名称	Anti-Cdc27抗体
描述	兔多克隆抗体to Cdc27
宿主	Rabbit
经测试应用	适用于: WB, ELISA, IHC-P
种属反应性	与反应: Mouse, Human 预测可用于: Rat
免疫原	Synthetic peptide conjugated to KLH derived from the C-terminal region of Human Cdc27.
阳性对照	Human Breast and Human Skin tissues, Mouse liver tissue lysate

性能

形式	Liquid
存放说明	Shipped at 4°C. Store at +4°C short term (1-2 weeks). Store at -20°C or -80°C. Avoid freeze / thaw cycle.
存储溶液	Preservative: 0.02% Sodium azide Constituent: 99% PBS
纯度	Immunogen affinity purified
克隆	多克隆
同种型	IgG

应用

Our [Abpromise guarantee](#) covers the use of **ab113361** in the following tested applications.

The application notes include recommended starting dilutions; optimal dilutions/concentrations should be determined by the end user.

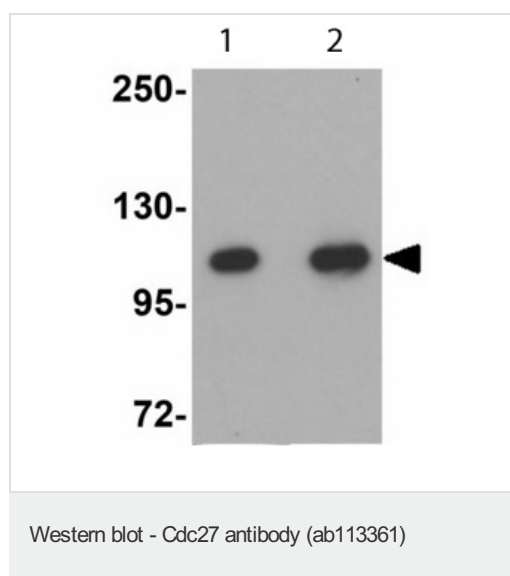
应用	Ab评论	说明
WB		Use a concentration of 1 - 2 µg/ml. Predicted molecular weight: 92 kDa.
ELISA		Use at an assay dependent concentration.

应用	Ab评论	说明
IHC-P		Use a concentration of 5 µg/ml. Perform heat mediated antigen retrieval with citrate buffer pH 6 before commencing with IHC staining protocol.

靶标

功能	Component of the anaphase promoting complex/cyclosome (APC/C), a cell cycle-regulated E3 ubiquitin ligase that controls progression through mitosis and the G1 phase of the cell cycle. The APC/C complex acts by mediating ubiquitination and subsequent degradation of target proteins: it mainly mediates the formation of 'Lys-11'-linked polyubiquitin chains and, to a lower extent, the formation of 'Lys-48'- and 'Lys-63'-linked polyubiquitin chains.
通路	Protein modification; protein ubiquitination.
序列相似性	Belongs to the APC3/CDC27 family. Contains 9 TPR repeats.
翻译后修饰	Phosphorylated. Phosphorylation on Ser-426 and Thr-446 occurs specifically during mitosis.
细胞定位	Nucleus.

图片

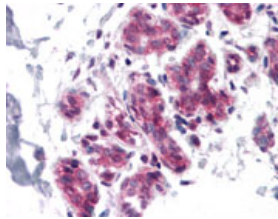


Lane 1 : Anti-Cdc27 antibody (ab113361) at 1 µg/ml

Lane 2 : Anti-Cdc27 antibody (ab113361) at 2 µg/ml

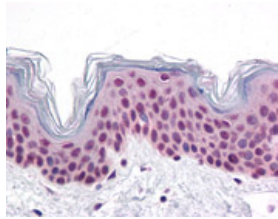
All lanes : Mouse liver tissue lysate

Predicted band size: 92 kDa



Immunohistochemistry (Formalin/PFA-fixed paraffin-embedded sections) - Cdc27 antibody (ab113361)

Staining of Human Cdc27 in a Formalin/PFA-fixed paraffin-embedded section of Human Breast using ab113361 at a concentration of 5 $\mu\text{g/ml}$.



Immunohistochemistry (Formalin/PFA-fixed paraffin-embedded sections) - Cdc27 antibody (ab113361)

Staining of Human Cdc27 in a Formalin/PFA-fixed paraffin-embedded section of Human Skin using ab113361 at a concentration of 5 $\mu\text{g/ml}$.

Please note: All products are "FOR RESEARCH USE ONLY AND ARE NOT INTENDED FOR DIAGNOSTIC OR THERAPEUTIC USE"

Our Abpromise to you: Quality guaranteed and expert technical support

- Replacement or refund for products not performing as stated on the datasheet
- Valid for 12 months from date of delivery
- Response to your inquiry within 24 hours
- We provide support in Chinese, English, French, German, Japanese and Spanish
- Extensive multi-media technical resources to help you
- We investigate all quality concerns to ensure our products perform to the highest standards

If the product does not perform as described on this datasheet, we will offer a refund or replacement. For full details of the Abpromise, please visit <http://www.abcam.cn/abpromise> or contact our technical team.

Terms and conditions

- Guarantee only valid for products bought direct from Abcam or one of our authorized distributors