

Product datasheet

Anti-Caveolin-1 antibody [AT4C1] ab106642

1 图像

概述

产品名称	Anti-Caveolin-1抗体[AT4C1]
描述	小鼠单克隆抗体[AT4C1] to Caveolin-1
宿主	Mouse
经测试应用	适用于: WB, ELISA
种属反应性	与反应: Rat, Human
免疫原	Recombinant fragment corresponding to Human Caveolin-1 aa 1-104. Recombinant fragment, corresponding to amino acids 1-104 of Human Caveolin-1 purified from E. coli (NP_001744) Database link: Q03135
阳性对照	Rat brain lysates
常规说明	Abcam is committed to meeting high standards of ethical manufacturing and has decided to discontinue this product by June 2019 as it has been generated by the ascites method. We are sorry for any inconvenience this may cause.

性能

形式	Liquid
存放说明	Shipped at 4°C. Upon delivery aliquot and store at -20°C. Avoid freeze / thaw cycles.
存储溶液	Preservative: 0.1% Sodium Azide Constituents: PBS, pH 7.4
纯度	Protein G purified
克隆	单克隆
克隆编号	AT4C1
同种型	IgG2b
轻链类型	kappa

应用

Our [Abpromise guarantee](#) covers the use of **ab106642** in the following tested applications.

The application notes include recommended starting dilutions; optimal dilutions/concentrations should be determined by the end user.

应用	Ab评论	说明
WB		1/250 - 1/1000. Predicted molecular weight: 20 kDa.
ELISA		Use at an assay dependent dilution.

靶标

功能

May act as a scaffolding protein within caveolar membranes. Interacts directly with G-protein alpha subunits and can functionally regulate their activity (By similarity). Involved in the costimulatory signal essential for T-cell receptor (TCR)-mediated T-cell activation. Its binding to DPP4 induces T-cell proliferation and NF-kappa-B activation in a T-cell receptor/CD3-dependent manner. Recruits CTNNB1 to caveolar membranes and may regulate CTNNB1-mediated signaling through the Wnt pathway.

组织特异性

Expressed in muscle and lung, less so in liver, brain and kidney.

疾病相关

Defects in CAV1 are the cause of congenital generalized lipodystrophy type 3 (CGL3) [MIM:612526]; also called Berardinelli-Seip congenital lipodystrophy type 3 (BSCL3). Congenital generalized lipodystrophies are autosomal recessive disorders characterized by a near absence of adipose tissue, extreme insulin resistance, hypertriglyceridemia, hepatic steatosis and early onset of diabetes.

序列相似性

Belongs to the caveolin family.

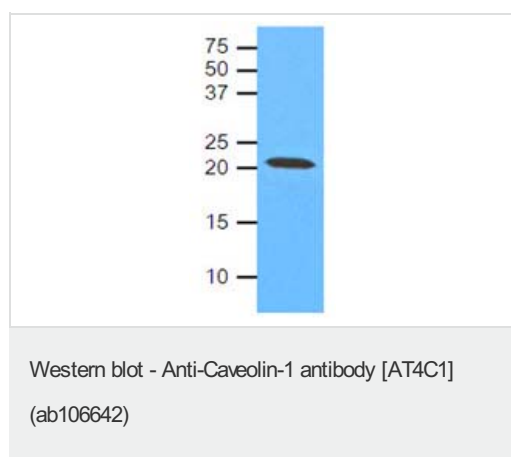
翻译后修饰

The initiator methionine for isoform Beta is removed during or just after translation. The new N-terminal amino acid is then N-acetylated.

细胞定位

Golgi apparatus membrane. Cell membrane. Membrane > caveola. Membrane raft. Colocalized with DPP4 in membrane rafts. Potential hairpin-like structure in the membrane. Membrane protein of caveolae.

图片



Anti-Caveolin-1 antibody [AT4C1] (ab106642)
at 1/1000 dilution + Rat brain lysate at 40 µg

Secondary

Goat anti-mouse HRP conjugated

Developed using the ECL technique.

Predicted band size: 20 kDa

Please note: All products are "FOR RESEARCH USE ONLY AND ARE NOT INTENDED FOR DIAGNOSTIC OR THERAPEUTIC USE"

Our Abpromise to you: Quality guaranteed and expert technical support

- Replacement or refund for products not performing as stated on the datasheet
- Valid for 12 months from date of delivery
- Response to your inquiry within 24 hours

- We provide support in Chinese, English, French, German, Japanese and Spanish
- Extensive multi-media technical resources to help you
- We investigate all quality concerns to ensure our products perform to the highest standards

If the product does not perform as described on this datasheet, we will offer a refund or replacement. For full details of the Abpromise, please visit <http://www.abcam.cn/abpromise> or contact our technical team.

Terms and conditions

- Guarantee only valid for products bought direct from Abcam or one of our authorized distributors