

Product datasheet

Anti-Cathepsin S antibody ab103848

1 图像

概述

产品名称	Anti-Cathepsin S抗体
描述	兔多克隆抗体to Cathepsin S
宿主	Rabbit
经测试应用	适用于: WB
种属反应性	与反应: Human
免疫原	Synthetic peptide conjugated to KLH derived from within residues 300 to the C-terminus of Human Cathepsin S.参阅Abcam的专有抗源政策
阳性对照	This antibody gave a positive signal in the following lysates: Lung (Human) Tissue Lysate; Spleen (Human) Tissue Lysate - adult normal tissue;

性能

形式	Liquid
存放说明	Shipped at 4°C. Store at +4°C short term (1-2 weeks). Upon delivery aliquot. Store at -20°C or -80°C. Avoid freeze / thaw cycle.
存储溶液	Preservative: 0.02% Sodium Azide Constituents: 1% BSA, PBS, pH 7.4
纯度	Immunogen affinity purified
克隆	多克隆
同种型	IgG

应用

Our [Abpromise guarantee](#) covers the use of **ab103848** in the following tested applications.

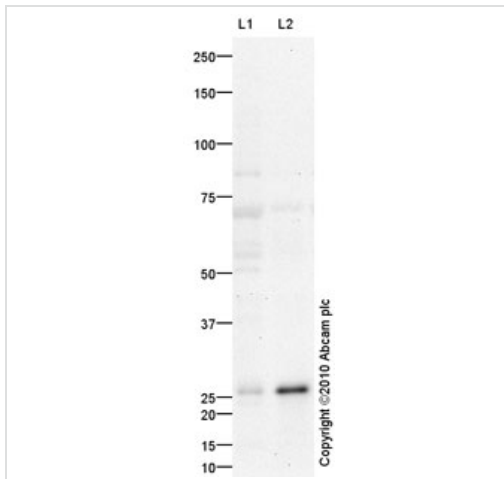
The application notes include recommended starting dilutions; optimal dilutions/concentrations should be determined by the end user.

应用	Ab评论	说明
WB		Use a concentration of 1 mg/ml. Detects a band of approximately 25 kDa (predicted molecular weight: 37 kDa).

靶标

功能	Thiol protease. Key protease responsible for the removal of the invariant chain from MHC class II molecules. The bond-specificity of this proteinase is in part similar to the specificities of cathepsin L and cathepsin N.
序列相似性	Belongs to the peptidase C1 family.
细胞定位	Lysosome.

图片



Western blot - Anti-Cathepsin S antibody
(ab103848)

All lanes : Anti-Cathepsin S antibody
(ab103848) at 1 μ g/ml

Lane 1 : Lung (Human) Tissue Lysate

Lane 2 : Human spleen tissue lysate - total
protein ([ab29699](#))

Lysates/proteins at 10 μ g per lane.

Secondary

All lanes : Goat polyclonal Secondary
Antibody to Rabbit IgG - H&L (HRP), pre-
adsorbed at 1/5000 dilution

Developed using the ECL technique.

Performed under reducing conditions.

Predicted band size: 37 kDa

Observed band size: 25 kDa

Exposure time: 20 minutes

We hypothesize that the 25 kDa band
represents the mature form of Cathepsin S.

Abcam welcomes customer feedback.

Please note: All products are "FOR RESEARCH USE ONLY AND ARE NOT INTENDED FOR DIAGNOSTIC OR THERAPEUTIC USE"

Our Abpromise to you: Quality guaranteed and expert technical support

- Replacement or refund for products not performing as stated on the datasheet

- Valid for 12 months from date of delivery
- Response to your inquiry within 24 hours

- We provide support in Chinese, English, French, German, Japanese and Spanish
- Extensive multi-media technical resources to help you
- We investigate all quality concerns to ensure our products perform to the highest standards

If the product does not perform as described on this datasheet, we will offer a refund or replacement. For full details of the Abpromise, please visit <http://www.abcam.cn/abpromise> or contact our technical team.

Terms and conditions

- Guarantee only valid for products bought direct from Abcam or one of our authorized distributors