

## Product datasheet

# Anti-Casein antibody [F20.14] ab47972

★★★★★ 1 Abreviews 2 References 1 图像

### 概述

产品名称	Anti-Casein抗体[F20.14]
描述	小鼠单克隆抗体[F20.14] to Casein
宿主	Mouse
特异性	This antibody does not react with alpha lactalbumin. This antibody can be used as an in vitro marker of terminally differentiated breast luminal epithelial cells.
经测试应用	适用于: IHC-P, WB, IHC-Fr
种属反应性	与反应: Human
免疫原	Full length protein (Human)

### 性能

形式	Liquid
存放说明	Shipped at 4°C. Upon delivery aliquot and store at -20°C or -80°C. Avoid repeated freeze / thaw cycles.
存储溶液	Preservative: None Constituents: PBS
克隆	单克隆
克隆编号	F20.14
骨髓瘤	x63-Ag8.653
同种型	IgG1

### 应用

Our [Abpromise guarantee](#) covers the use of **ab47972** in the following tested applications.

The application notes include recommended starting dilutions; optimal dilutions/concentrations should be determined by the end user.

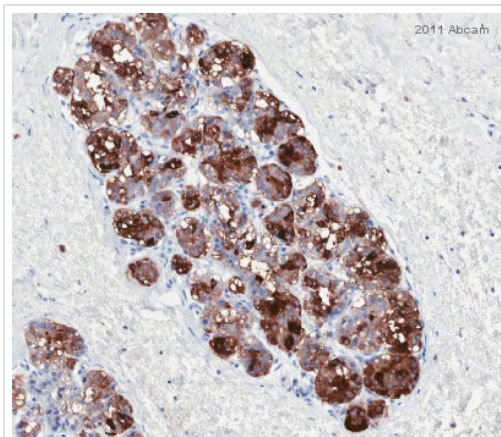
应用	Ab评论	说明
IHC-P	★★★★★	Use at an assay dependent concentration.

应用	Ab评论	说明
WB		Use at an assay dependent concentration. Detects a band of approximately 28 kDa (predicted molecular weight: 22 kDa).
IHC-Fr		Use at an assay dependent concentration. Fix with acetone.

## 靶标

功能	Important role in the capacity of milk to transport calcium phosphate. Casoxin D acts as opioid antagonist and has vasorelaxing activity mediated by bradykinin B1 receptors.
组织特异性	Mammary gland specific. Secreted in milk.
序列相似性	Belongs to the alpha-casein family.
翻译后修饰	Not glycosylated.
细胞定位	Secreted.

## 图片



Immunohistochemistry (Formalin/PFA-fixed paraffin-embedded sections) - Anti-Casein antibody [F20.14] (ab47972)

This image is courtesy of an Anonymous Abreview.

ab47972 staining Casein in Human lactating breast tissue biopsy by Immunohistochemistry (Formalin/PFA-fixed paraffin-embedded tissue sections). The sections were fixed in paraformaldehyde and subjected to heat-mediated antigen retrieval in citrate buffer (pH 6.0) prior to blocking with 1% normal serum containing 0.05% Tween for 30 minutes at room temperature. The primary antibody was diluted 1/100 and incubated with the sample for 1 hour. A biotin-conjugated Donkey anti-Mouse IgG was used as the secondary antibody, diluted 1/250.

**Please note:** All products are "FOR RESEARCH USE ONLY AND ARE NOT INTENDED FOR DIAGNOSTIC OR THERAPEUTIC USE"

## Our Abpromise to you: Quality guaranteed and expert technical support

- Replacement or refund for products not performing as stated on the datasheet
- Valid for 12 months from date of delivery
- Response to your inquiry within 24 hours

- We provide support in Chinese, English, French, German, Japanese and Spanish
- Extensive multi-media technical resources to help you
- We investigate all quality concerns to ensure our products perform to the highest standards

If the product does not perform as described on this datasheet, we will offer a refund or replacement. For full details of the Abpromise, please visit <http://www.abcam.cn/abpromise> or contact our technical team.

### **Terms and conditions**

---

- Guarantee only valid for products bought direct from Abcam or one of our authorized distributors